

## Mississippi Emergency Support Function #3 – Public Works and Engineering Annex

---

### MS ESF #3 Coordinator:

Mississippi Military Department -  
Construction and Facilities  
Management Office

### Primary Agency:

Mississippi Military Department – Office of  
the Adjutant General

### MS Support Agencies:

Mississippi Emergency Management  
Agency  
Mississippi Department of Health-Water  
Supply Division  
Mississippi Department of Environmental  
Quality-Wastewater Division  
Mississippi Department of Transportation  
Mississippi Department of Corrections  
Mississippi Development Authority-Energy  
Division  
Mississippi Forestry Commission  
Mississippi Department of Finance and  
Administration  
Mississippi Military Department  
Mississippi Department of Marine  
Resources  
Mississippi Department of Wildlife  
Fisheries, and Parks  
Mississippi Public Service Commission,  
Public Utilities Staff

Mississippi Levee Board  
Yazoo - Mississippi Delta Levee Board

### MS Non-Governmental Organizations:

AL/MS Section, American Water Works  
Association  
Mississippi Water and Pollution Control  
Operators Association  
Mississippi Rural Water Association  
Mississippi Chapter of the American Public  
Works Association  
Mississippi Water Environment Association  
Building Officials of Mississippi  
Community Resource Group/Mississippi  
Rural Community Assistance  
Program  
Mississippi Municipal League  
Mississippi Association of Supervisors

### Federal ESF Coordinator:

Department of Defense/U.S. Army Corps of  
Engineers

### Federal Primary Agencies:

Department of Defense/U.S. Army Corps of  
Engineers  
Department of Homeland  
Security/Emergency Preparedness  
and Response/ Federal Emergency  
Management Agency

---

## Introduction

### Purpose

The purpose of this Emergency Support Function Annex is to describe how the public works and engineering tasks at the state level will be accomplished in disaster response and recovery and to designate the agencies responsible for their accomplishment. This includes designating state-level organizations to provide technical advice, engineering services, and emergency repair and contracting for repairs and restoration to both state properties and to local governments. Emergency Support Function (ESF) #3 — Public Works and Engineering provides technical advice and evaluation, communicates and coordinates through MEMA with affected areas on infrastructure, recommends for tasking engineering services, contracting for construction management and inspection, contracting for the emergency repair of

local transportation systems, water and wastewater treatment facilities, emergency power, and other related support to assist the state in meeting goals related to lifesaving and life-sustaining actions, damage mitigation, and recovery activities following a major disaster or emergency.

## **Scope**

Activities within the scope of ESF #3 include, but are not limited to:

- If an emergency or a major disaster should overwhelm the resources and capabilities of public works at the local government level, ESF #3 of the Mississippi Comprehensive Emergency Management Plan (CEMP) will be activated to provide support in accordance with concepts of the National Response Framework (NRF).
- If the mobilization of Federal ESF#3 is required, the United States Army Corps of Engineers (USACE) is the primary agency.
- Participation in pre-disaster activities, such as state-sponsored training, pre-positioning assessment teams, mobilization of facilities, communications and transportation needs, where applicable and deployment of other advance elements;
- Participation in needs/damage assessments immediately following a disaster;
- Coordinate emergency clearance of debris to enable reconnaissance of the damaged areas and passage of emergency personnel and equipment for lifesaving, property protection, and health and safety;
- Coordinate removal and disposal of debris from public property;
- Coordinate emergency access routes which include repairs to damaged streets, bridges, ports, waterways, airfields, and other facilities necessary for emergency access to disaster victims;
- Coordinate emergency restoration of critical public facilities, including the temporary restoration of water supplies and wastewater treatment systems;
- Coordinate inspection of damaged structures and facilities. Monitor demolition or stabilization designated by State or local government as immediate hazards to public health and safety, or as necessary to facilitate lifesaving operations (temporary protective measures to abate immediate hazards to the public for health and safety reasons until demolition is accomplished);
- Coordinate emergency contracting to support public health and safety such as providing for potable water, ice or power;
- Coordinate technical assistance, including inspection of private residential structures and commercial structures;
- Support to other ESFs as outlined in the National Response Framework (NRF) and;
- Assessment and coordination of emergency power to public facilities.

## **Policies**

- The state through the State Emergency Operations Center (SEOC) will maintain overall direction, control, and coordination of the response and recovery efforts through coordination with all

participating agencies to include Federal agencies tasked by the Federal Emergency Management Agency (FEMA).

- The MMD will appoint overall mission coordinators for all ESF #3 response and recovery activities at the State Emergency Operation Center (SEOC) and JFO as appropriate. The ESF#3 Emergency Coordinating Officer (ECO) appointed by the MMD will handle requests at the SEOC for emergency resources. ESF#3 will coordinate within MEMA protocol to continue to provide resources using support agencies and other agency resources and capabilities to affected communities in the recovery process.
- MMD will develop work priorities in cooperation with the SEOC and in coordination with the State Coordinating Officer (SCO).

## **Support**

- ESF #3 primary and support agencies will coordinate with their respective private entities and non-governmental organizations to ensure ESF #3 responsibilities are being carried out. .

## **Federal Government**

- Coordination with respective state and federal agencies will be ongoing, as follows:
  - MDEQ—Environmental Protection Agency, Region 4
  - MSDH—Environmental Protection Agency, Region 4
  - MDOT—Federal Highway Administration, U.S. Department of Transportation
  - MEMA—FEMA; USACE
  - MMD—National Guard Bureau/1<sup>st</sup> Army/U.S. Northern Command; USACE

---

## **Concept of Operations**

### **Assumptions**

- Most emergencies and disasters involve damage to property to some extent. Roads, bridges, public utility systems, public and private buildings, homes, and other facilities will have to be inspected and either cleared for use, reinforced, quarantined, or demolished to ensure safety.
- The inspection, repair, or demolition of buildings and infrastructure damaged by a disaster is the responsibility of local officials, as is the enforcement of local building, zoning and subdivision regulations. ESF#3's function is resource assistance. ESF#3 may task inspectors to jurisdictions through Mutual Aid Resources for assessments; the local jurisdiction will make final determinations and take appropriate action.
- Upon successful reinstatement of public water supplies, the probable overflow of inoperable wastewater collection and treatment systems may compound public health concerns.
- In the event power is lost and alternate power supplies are not adequate to the infrastructure, a critical water shortage may develop which can only be met through transporting bulk water into the affected area in tanker trucks or by using portable treatment facilities with local surface supply. Adequate pressurized water supplies or operable hydrants may not be available for fire -fighting operations.
- Immediate evaluation of the safety of public and private structural and non-structural damage will be critical to preventing further damage and to protect the public's health and welfare.

- Debris will restrict the use of streets and highways, making some impassable. Public utilities will be also damaged/covered by debris and may be partially or fully inoperable.
- Vital public works and engineering trucks and equipment in the immediate disaster area may be damaged or temporarily inaccessible for response and recovery applications.
- State or Federal assistance may be required to identify and deploy resources from outside the affected area to ensure a timely, efficient, and effective response and recovery.
- Access to the disaster areas will be dependent upon the reestablishment of ground and water routes. In many locations, debris clearance and emergency road repairs will be given top priority to support immediate lifesaving emergency response activities.
- Early damage assessments will be general, incomplete, and may be inaccurate. Rapid assessments of the disaster area are required to determine critical response times and potential work loads.
- Methodology for prioritizing tasks will generally be found to be ranked by public health/safety and population affected.
- To minimize threats to public health, emergency environmental waivers and legal clearances may be needed to dispose of emergency debris and materials from demolition activities. Local authorities are responsible for obtaining required waivers and clearances.
- Significant numbers of personnel having engineering and construction skills and construction equipment and materials may be required from outside the disaster area.
- Primary agencies (including MMD) and support agencies will perform tasks under their own authorities, as applicable, in addition to missions received under the authority of MEMA.
- Maps (electronic or hard-copy) may be inaccessible locally for many utilities
- Numerous volunteering entities, both governmental and non-governmental may mobilize personnel, supplies and equipment to affected areas with neither coordination nor communication with the ESF#3 cell. Duplication, chaos and confusion may ensue and vital resources will be found to have been better tasked to other areas.
- Regional and National resource networks may fail to operate.
- MMD and support agency personnel required to man the ESF#3 cell may not have access to fuel for personally owned vehicles (POV) to travel to work or field.
- Jurisdictions from both in and out-of-state will offer services to those in need.
- Local officials in affected areas will have little knowledge of procedure available to them in the aftermath of disaster (emergency procurement procedure). Where adequate Mutual Aid Agreements (MAA) are not in place, resistance to signing new ones will prevail.
- Local officials will resist “paying up front” – attempts will be made to travel the “100% Assistance” path, delaying acceptable tasking options.
- Contractors offering ‘free and voluntary’ services or supplies will be on the scene seeking travel pass.

## General

- Local officials, through their county EOCs, should be encouraged to be self-sufficient during the first 2 – 3 days of a disaster.
  - Local officials and managers should channel their requests for assistance where possible through county EOCs.
  - County EOC's should encourage local officials to learn more about the benefits of Mutual-Aid Agreements, particularly for their utilities.
  - Local officials must conduct initial damage assessment to determine the severity and magnitude of property damage in quantity, community impact, and dollar amount. These results will be reported to the SEOC where appropriate response actions will be initiated. Where possible, such communication should be routed through the jurisdiction's county EOC.
  - MMD is the leading agency responsible for ESF #3. The MMD ECO for ESF #3 will coordinate with all appropriate agencies/departments and organizations to ensure operational readiness in time of emergency. According to the following priorities, state program assistance for this function in conjunction with other ESF's includes:
    - Reconnaissance of the damaged areas and routes to be accessed by emergency personnel and equipment for lifesaving, life protecting, and health and safety purposes during the immediate response phase;
    - Power generation support to affected areas;
    - Emergency clearance of debris, ice, or snow as prioritized according to the needs of the affected areas;
    - Emergency construction of temporary access to emergency routes such as streets, roads, bridges, waterways, airfields, and any other facilities necessary for movement of rescue personnel;
    - Emergency construction management and inspection in conjunction with Federal ESF #3;
    - Technical advice;
    - Engineering services; and
    - Emergency contracting.
    - Regular Situation Reporting to the SEOC Chief and ESF#5.
  - As the emergency or disaster situation exceeds the resources of the State, the MMD ECO will request assistance from the Federal Representative for ESF #3 through MEMA's procedural process.
  - If a joint Preliminary Damage Assessment (PDA) is needed to verify the extent of the damage, FEMA representatives will join with state and local representatives to conduct these surveys to provide data needed for the Governor to request a Presidential Disaster Declaration.
-

---

## Organization

### State Emergency Operations Center

ESF #3 is part of the SEOC, Operations Section, Emergency Services Branch, MEMA.

### Headquarters ESF #3 Support

- Protocol and Record keeping
  - MMD, as primary to ESF#3 and all participating agencies will follow administrative procedures and keep appropriate records according to prescribed guidance and SOPs.
  - MEMA establishes/approves ESF#3 procedures.
  - ESF#3 will operate in concert with the Incident Command System (ICS).
  - MMD will assist in the development and maintenance of the ESF#3 SOP.
  - Resources may be obtained by activating mutual aid agreements (EMAC, SMAC, etc), through pre-existing state contracts, and through emergency bidding procedures.
  - Resources acquired through mutual aid agreements such as EMAC, SMAC, etc. will be managed according to the requirements of those agreements.
- Contracting
  - Prior arrangements must be developed for direct contracting with private contractors, vendors and engineers to assist in response and recovery efforts.

### Mutual Aid Agreements

- Local government support is available to members of the State Mutual Aid Compact (SMAC).
- Support from other states is available through the Emergency Management Assistance Compact (EMAC).
- Other Mutual Aid Agreement Networks for interstate and intrastate assistance may exist for utilities – it should be strongly urged of those networks to coordinate their activities through ESF#3.

### Operations and Planning ESF #3 Support

- ESF#3 will report all activity via appropriate media as required by MEMA.
- ESF#3 will provide daily situation reporting to ESF#5 as directed by that support function.

### Field Units

**Requisite:** All mobilization, dispatch, equipping and billeting of advance personnel shall be coordinated through MEMA for travel pass. All field personnel shall request needs and report accordingly through ESF#3. Support agency personnel will mobilize through their respective agencies.

- ESF #3 may be asked by MEMA to provide personnel to the Joint Field Office (JFO) to work closely with their federal counterparts at the established JFO(s) and in the field.
- ESF#3 may, through MSDH, dispatch couriers to accept and deliver to the state laboratory potable water samples from affected communities.
- ESF#3 may through MSDH and/or MDEQ arrange for portable laboratories for environmental analysis at prescribed locations in order to expedite public water & wastewater sampling.
- ESF#3 may, through MDEQ and/or MSDH, establish temporary field offices and communications centers for monitoring and assessment of potable water, wastewater, waste disposal and fire protection systems.
- ESF#3 may through MDOT, dispatch inspecting engineers, or other support.

---

## **Actions**

### **Preparedness**

- The MMD, in conjunction with support agencies:
  - Ensures that state-level ESF#3 SOPs are developed and maintained that conform to this plan and provide greater detail on the ESF operations.
  - Trains and exercises MS ESF #3 personnel.
  - Designates an ECO, alternate ECO, and an ESF #3 liaison who will go to the SEOC, State Hurricane Support Center (SHSC), State Earthquake Support Center (SESC), DFO, or on the State Emergency Response Team (SERT), Rapid Needs Assessment Team (RNA), or other areas of operation.
- All agencies with MS-ESF #3 responsibilities:
  - Support development and maintenance of SOPs to enable them to perform appropriate levels of mitigation, preparedness, response, and recovery related to public works and engineering.
  - Assign and train personnel to support emergency operations at the SEOC, State Hurricane Support Center (SHSC), State Earthquake Support Center (SESC), JFO, or on the SERT, RNA, or other areas of operation.
  - Participate in training and exercises when scheduled.
  - Ensure their administrative, supervisory and technical personnel remain aware of the agency's role with MEMA and ESF#3.

### **Pre-Incident**

- Provide an ECO (and alternate if 24- hour coverage is necessary) and MS-ESF #3 liaison to the SEOC.

- Arrange meeting with MEMA Director on MMD actions to be taken; request assignment of MEMA ESF#3 Liaison (LNO) to MMD.
- Assign responsibility to MMD personnel in regard to ESF#3 Team.
- Notify Support Agency and Partners on activation as needed and minimal staffing requirements.
- Conduct preliminary staff meeting with complete ESF#3 Team at EOC facility assigned. Establish strategies for approaching incident(s).

### **Incident**

- Upon activation of ESF #3, ECO will communicate pertinent information to all ESF #3 members. Such information will be complete orientation of the ESF#3 mission, purpose and scope of work. Issue or have available ESF#3 SOP manual for Team reference.
- Ensure adequate communications are established and maintained.
- Ensure all MEMA incident forms to be used by the team are in supply.
- Obtain an initial situation and damage assessment through established intelligence procedures.
- Establish report with Geospatial Technology personnel according to MEMA mapping procurement guidelines.
- Coordinate the distribution of assets as needed.
- Establish per SOP and maintain a complete log of actions taken, resource orders, records, and reports.
- Establish per SOP protocols for interface with federal counterparts, if applicable.

### **ESF #3 Incident Actions**

Activities within the ESF #3 function include , but are not limited to , the following:

- Participation in pre-incident activities, such as pre-positioning assessment teams and contractors, and deploying advance support elements.
- Participation in post-incident assessments of public works and infrastructure to help determine critical needs and potential workloads.
- Implementation of structural and nonstructural mitigation measures, including deploying of protective measures, to minimize adverse effects or fully protect resources prior to an incident.
- Support in the monitoring and stabilization of damaged structures and the demolition of structures designated as immediate hazards to public health and safety. .
- Support in emergency repair of damaged infrastructure and critical public facilities (temporary power, emergency water, sanitation & transportation systems, etc.). Supporting the restoration of critical navigation, flood control, and other water infrastructure systems.
- Management and coordination of monitoring, and/or providing technical advice in the clearance and

removal of debris from public property and the reestablishment of ground and water routes into impacted areas. The management of contaminated debris is coordinated with ESF #10— Oil and Hazardous Materials Response. For purposes of ESF #3, contaminated debris is intended to mean debris that displays the same characteristics of regulated hazardous materials. Waste management related to hazardous site remediation is addressed under ESF #10.

- Providing technical assistance to include engineering expertise, construction coordination, contracting assistance, inspection of public structures.

### **Recovery**

- Continue actions initiated during response as long as needed.
- Undertake recovery actions as required by MEMA

### **Post-Incident**

- Prepare an after-action report. The after-action report identifies key problems, indicates how they are to be/were solved, and makes recommendations for improving ESF response operations. All ESF #3 staff and organizations assist in preparation of the after-action report.
- Review and recommend revision to plans and procedures as determined necessary.
- Copy, catalogue and properly file all records and documents pertaining to incident. Maintain in electronic and paper form.
- Compare ESF#3 staff records with MEMA network tasking and tracking system to assure accuracy.

---

## Responsibilities

### Mississippi Military Department (MMD) – ESF Coordinator:

#### ESF Coordinator – MMD

- Develop Standard Operating Procedures (SOPs) in conjunction with MEMA and ESF #3 supporting agencies.
- Designate individuals who will report to the SEOC upon activation and will act as the ECO for ESF #3 (ensure an alternate ECO for 24-hour availability).
- Coordinate resources and prioritize needs of engineering and public works support agencies regarding the provision of manpower and equipment for debris removal, damage assessment, and clearing roadways for accessibility during emergency and/or disaster situations.

---

## Support Agencies

Agency	Functions
MS State Department of Health	<ul style="list-style-type: none"> <li>▪ Supply Water Supply Engineer for ESF#3 team seat knowledgeable with all state public &amp; private potable water supplies and treatment processes (<i>provide alternate POC for 24-hour duty</i>)</li> <li>▪ Establish, maintain and have available effective database(s) on all public &amp; private water supply infrastructure, including multiple POC information.</li> <li>▪ Obtain and utilize, where appropriate, agency authority to mobilize field personnel and effect necessary procurement.</li> <li>▪ Recommend/Request Mission Assignments (MA) for assisting public water supplies.</li> </ul>
MS Bureau of Pollution Control	<ul style="list-style-type: none"> <li>▪ Supply Wastewater Engineer for ESF#3 team seat knowledgeable with all state public &amp; private sanitary sewer systems and wastewater treatment processes (<i>provide alternate POC for 24-hour duty</i>).</li> <li>▪ Establish and maintain effective database(s) on all public &amp; private wastewater system infrastructure, including multiple POC information.</li> <li>▪ Obtain and utilize, where appropriate, agency authority to mobilize field personnel and effect necessary procurement.</li> <li>▪ Recommend/Request Mission Assignments (MA) for assisting public wastewater systems.</li> <li>▪ Assess environmental damage and to wastewater systems.</li> <li>▪ Review plans for debris management activities to ensure compliance with existing State and Federal Environmental regulations.</li> <li>▪ Develop protocols and procedures for the opening, operation, and closing on debris staging sites, dumps and other facilities necessary for debris operations.</li> </ul>

Agency	Functions
MS Military Department	<ul style="list-style-type: none"> <li>▪ Mobilization of personnel and equipment, where necessary to assist forward field ESF#3 elements.</li> <li>▪ Assist with sandbagging and construction of temporary levees.</li> <li>▪ Assist in removal of debris from public rights of way and critical facilities.</li> <li>▪ Assist in Flood Flight Operations</li> <li>▪ Provide General engineering Support</li> </ul>
MS Department of Transportation	<ul style="list-style-type: none"> <li>▪ Supply Transportation Engineer for ESF#3 team seat (<i>provide alternate POC for 24-hour duty</i>).</li> <li>▪ Assess damage to roadways, traffic control systems, bridges, culverts, airports, ports and harbors and other transportation-related infrastructure.</li> <li>▪ Dispatch MDOT technical assistance personnel.</li> <li>▪ Assist in pumping out flooded areas.</li> <li>▪ Recommend/Request Mission Assignments (MA) for assisting affected area.</li> <li>▪ Establish and maintain effective database(s) on all regional MDOT offices, including multiple POC information.</li> </ul>
Mississippi Department of Corrections	<ul style="list-style-type: none"> <li>▪ Identify to ESF#3 appropriate personnel for potential ESF#3 team seat (<i>provide alternate POC for 24-hour duty</i>).</li> <li>▪ Supply supervised manpower for debris &amp; arboreal removal, sandbagging, emergency construction and other response efforts where required.</li> <li>▪ Provide Mutual Aid personnel and equipment to restore damaged facilities to full operation.</li> <li>▪ Supply supervised manpower where required throughout recovery process.</li> </ul>
Department of Economic and Community Development, Energy Division	<ul style="list-style-type: none"> <li>▪ Identify to ESF#3 appropriate personnel for potential ESF#3 team seat (<i>provide alternate POC for 24-hour duty</i>)</li> <li>▪ Perform applicable responsibilities as established in ESF#12, Energy.</li> <li>▪ Provide reporting to ESF#3 on commercial power status in affected area(s).</li> </ul>
Mississippi Emergency Management Agency	<ul style="list-style-type: none"> <li>▪ Provide individual with considerable Public Works experience to serve as liaison (LNO) between MEMA SEOC, ESF#5 and MMD/ESF#3.</li> <li>▪ Initiate and coordinate the debris removal process following a disaster.</li> <li>▪ Assist local officials with site determination and include selected sites and related contacts in each county CEMP.</li> <li>▪ Assist state agencies and local governments in the preparation and submission of federal disaster assistance applications.</li> <li>▪ Process and initiate MAs or ARFs, where appropriate.</li> <li>▪ Process by electronic means requests not directly sent through ESF#3 for their action and provide requests to ESF#3 for tasking.</li> <li>▪ Provide ESF#3 (MMD) access to EOC computer and other networking structure.</li> </ul>

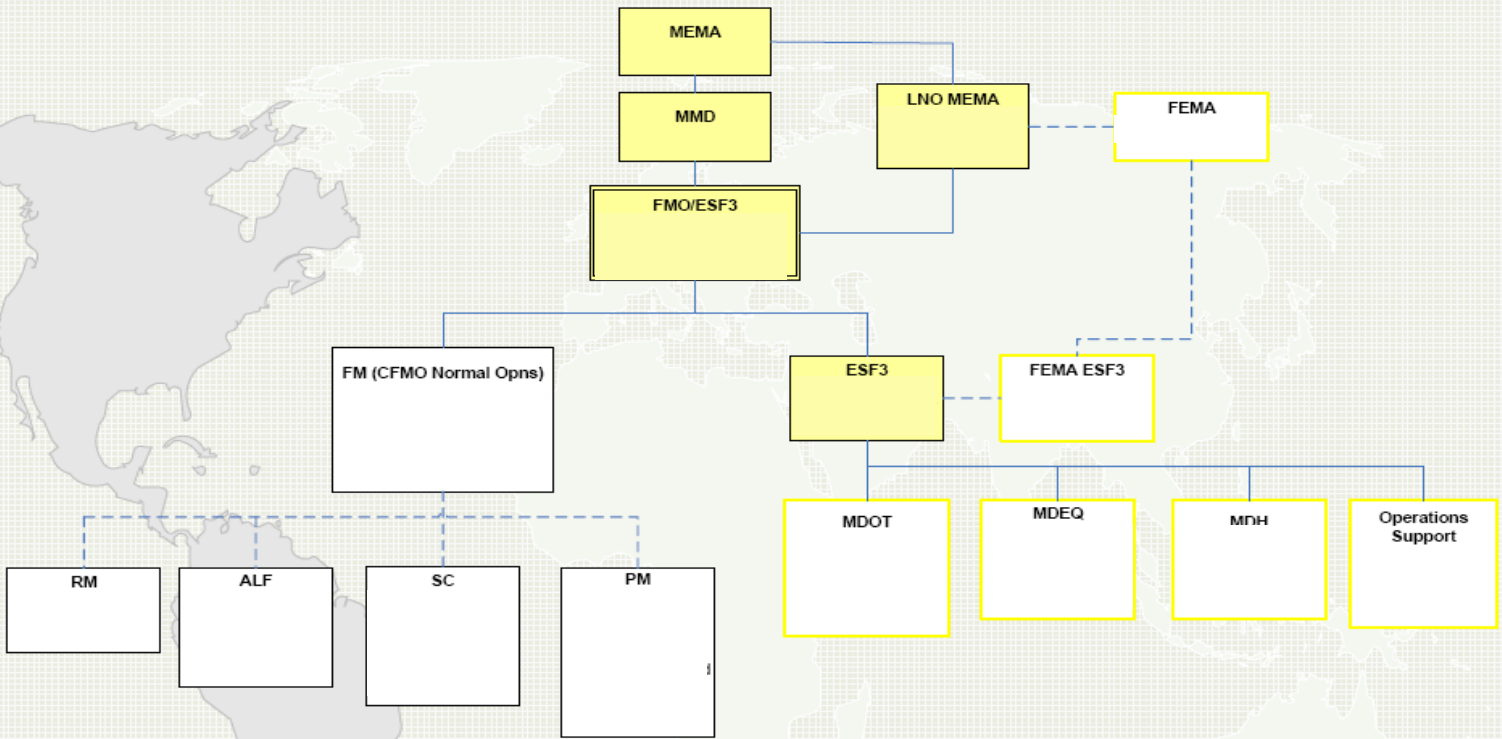
Agency	Functions
Mississippi Department of Finance and Administration	<ul style="list-style-type: none"> <li>▪ Provide architectural and engineering technical assistance to evaluate damaged structures, especially public buildings and critical facilities.</li> </ul>
Mississippi Forestry Commission	<ul style="list-style-type: none"> <li>▪ Identify to ESF#3 appropriate personnel for potential ESF#3 team seat (<i>provide alternate POC for 24-hour duty</i>)</li> <li>▪ Provide qualified personnel and equipment for debris clearance on state-owned lands as necessary.</li> <li>▪ Provide technical assistance to evaluate the risk of fire from debris and other operations.</li> <li>▪ Provide technical assistance in Incident Command System activities.</li> </ul>
Mississippi Department of Marine Resources	<ul style="list-style-type: none"> <li>▪ Identify to ESF#3 appropriate personnel for potential ESF#3 team seat (<i>provide alternate POC for 24-hour duty</i>).</li> <li>▪ Assess damage to coastal preserves and public trust tidelands.</li> <li>▪ Assist in evaluating the extent of environmental damage to areas outside of the coastal preserves and public trust tidelands.</li> <li>▪ Streamline the permit procedures for disaster-related coastal restoration activities.</li> <li>▪ Assess damage to all beaches for future evaluation &amp; restoration</li> <li>▪ Assess damage to Ports and Harbors</li> </ul>
Mississippi Department of Wildlife, Fisheries, and Parks	<ul style="list-style-type: none"> <li>▪ Identify to ESF#3 appropriate personnel for potential ESF#3 team seat (<i>provide alternate POC for 24-hour duty</i>)</li> <li>▪ Integral to the Environmental Permit process.</li> <li>▪ Coordinate the removal of debris from all state parks and recreational facilities.</li> </ul>
Mississippi Public Service Commission – Public Utilities Staff	<ul style="list-style-type: none"> <li>▪ Assist MDA in performing applicable responsibilities as established in ESF#12- Energy.</li> <li>▪ Provide information support on private utilities.</li> <li>▪ Provide Certificated Mapping information for all utilities via appropriate media.</li> </ul>
Mississippi Levee Board	<ul style="list-style-type: none"> <li>▪ Coordinate Flood Flight Operations between local, state and federal partners within its area of responsibility.</li> <li>▪ Provide technical and resource support for other operations as available.</li> </ul>
Yazoo - Mississippi Delta Levee Board	<ul style="list-style-type: none"> <li>▪ Coordinate Flood Fight Operations between local, state and federal partners within its area of responsibility.</li> <li>▪ Provide technical and resource support for other operations as available.</li> <li>▪ Support Preparedness, Response and Recovery activities by making Emergency Management Centers available to partner organizations as long as it does not interfere with YMDLB operations.</li> </ul>

Agency	Functions
MS Non-Governmental Organizations	<ul style="list-style-type: none"> <li>▪ Sponsor training and awareness of disaster operations so that individual members will be better able to prepare for, respond to, and recover from all types of hazards.</li> <li>▪ Assist in identifying unmet needs among members and relaying this information to ESF#3.</li> <li>▪ Coordinate assistance between members through ESF#3 to maintain situational awareness of response and recovery activities.</li> </ul>

---

### ESF#3 Review and Maintenance

- As a minimum, MMD will coordinate an annual review of this annex with all support agencies. Additional reviews may be conducted if experience with a significant incident or regulatory changes indicate a need. Recommendations for change will be submitted through the MMD to MEMA for approval, publication, and distribution.
-



# CFMO Normal and Emergency Operations

Edition 5, 0950, 2 September 2005