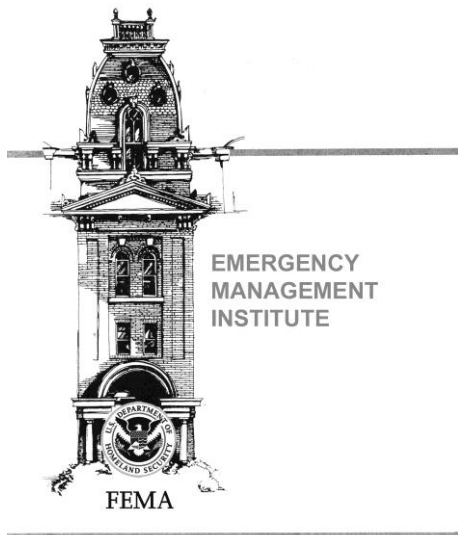


UNIT 4: FEEDING RESOURCE REQUIREMENTS AND PROVIDERS

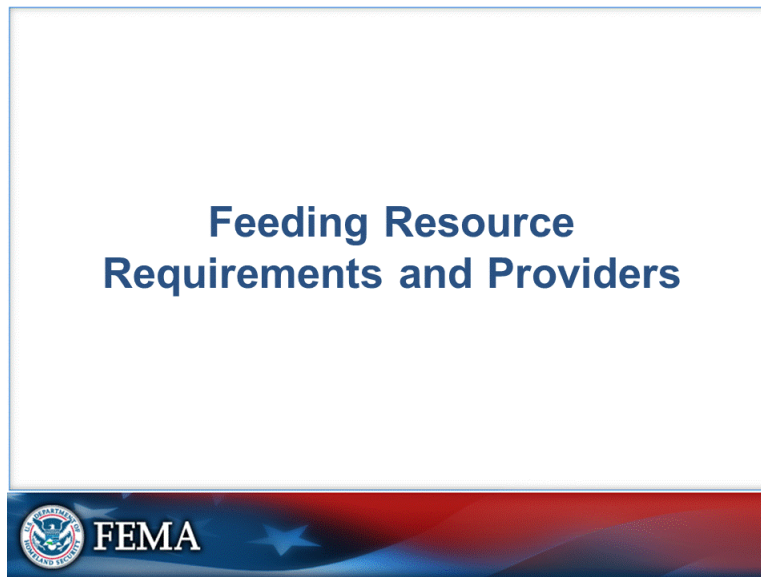
Student Manual

Federal Emergency Management Agency
Emergency Management Institute



This page intentionally left blank.

FEEDING INTRODUCTION




This unit will cover how your local community can address feeding resource requirements, and providers that may be available to support feeding during a disaster.

OBJECTIVES

Unit Objectives

- Describe how to determine the feeding resource requirements and potential feeding providers in your community.
- List the types of resources and requirements for feeding.
- Identify available resources and providers to meet the requirements for Mass Care and Emergency Assistance feeding services during an event in your community.



The slide features a red and blue wavy background at the bottom. On the left is the FEMA logo, which includes the text 'FEDERAL EMERGENCY MANAGEMENT AGENCY' around a central emblem. To the right of the logo is the word 'FEMA' in large white letters. Further right is a white star. On the far right, the number '4.2' is displayed in white.

At the conclusion of this unit, you will be able to:

- Describe how to determine the feeding resource requirements and potential feeding providers in your community.
- List the types of resources and requirements for feeding.
- Identify available resources and providers to meet the requirements for Mass Care and Emergency Assistance feeding services during an event in your community.

DISCUSSION



A large tornado struck a small town, destroying many homes and damaging others. Power to the community will take days to restore.

1. Would your community need to provide feeding operations? Why or why not?
2. Some residents have decided to stay in their damaged homes to protect their property. What feeding decisions might need to be made? Explain the decision.
3. Who might provide feeding operations in the community?

FEEDING



Feeding is defined as “providing food and hydration to sustain the health and well being of individuals and/or emergency workers impacted by the disaster.”

For Mass Care and Emergency Assistance feeding, the scale of the disaster is determined by a number of factors including the geographical extent of the disaster, the population within that defined area, and the percentage of that population that is without power, as well as individuals who are isolated as a result of the disaster.

To determine feeding requirements in your community, ask these questions:

- Where and when did the disaster happen?
 - How wide is the geographic area?
 - What infrastructure was affected?
 - How densely populated is the affected area? (i.e., low population density area that might require mobile instead of fixed feeding.)
 - What is the season?
- How many people were affected?
- Who was affected?
 - What is the demographic makeup of the affected community and what type of menus may be required to accommodate religious or cultural dietary restrictions?
 - Household pets

- What percentage of the affected population will need feeding? This will depend on a number of factors including:
 - Power outages
 - Lack of normal resources such as grocery stores or restaurants being open
 - Lack of individual preparedness
- Who will you coordinate with to determine these requirements?

Once an assessment is made of the following: how many individuals and families have been affected, the geography of the affected area, how many shelters are required, and the impact on the infrastructure, a decision can be made about the quantity and type of food to be acquired, prepared, and distributed for the duration of the feeding operation. After that is determined, a decision is made regarding whether facilities, equipment/supplies, and staff will be donated and/or paid for, what locations will be used to prepare the food, who will prepare the food, and what will be the best method to distribute the food.

For example, after a flood, residents may return to their homes to clean out the muck. Caterers or restaurants may be willing to donate food and prepare meals for a short period. Then local churches or school kitchens and other volunteer organizations may come online to support feeding for an extended period of time. Food distributors and food banks may be able to support the kitchens with food and consumables and local voluntary organizations may be able provide equipment/supplies and staff to acquire, prepare, and distribute the meals. It will all depend on the requirements and the resources of a community.

To determine what will be the best method to distribute the food, there are two primary methods to consider:

1. Fixed
2. Mobile

Fixed Feeding

Fixed-delivery depends on the event and is an efficient, expedient way to feed a population in a central location. A fixed-feeding site may be a permanent facility, such as a church or school, which has been designated for disaster work. Mobile feeding units may be used as fixed-feeding sites, for example, The Salvation Army canteen may be parked in a stationary location. Other fixed-feeding can occur at first aid stations, Points of Distribution (POD) for emergency supplies, and/or at an emergency evacuation sites.

Mobile Feeding

Mobile feeding is provided through the use of specialized delivery vehicles, such as American Red Cross Emergency Response Vehicles (ERVs) or The Salvation Army canteens, although vans, trucks, and other vehicles may also be used. In mobile feeding, vehicles are assigned routes through disaster-impacted areas and food is distributed as they drive through these areas.

There are several advantages to mobile feeding, including:

- Provides a quick response
- Enables high saturation of affected areas
- Enables disaster workers to respond to otherwise isolated or sparsely populated areas
- Allows Mass Care and Emergency Assistance workers to service multiple locations with limited resources

ACTIVITY 4.1

Activity 4.1

1. Work in table groups.
2. Identify two requirements for each resource.
3. Use the worksheet to determine providers.
4. Report out findings to the class.



FEMA


4.5

RECAP

Unit 4 Recap

You should now be able to:

- Describe how to determine the feeding resource requirements and potential feeding providers in your community.
- List the types of resources and requirements for feeding.
- Identify available resources and providers to meet the requirements for Mass Care and Emergency Assistance feeding services during an event in your community.

 **FEMA** 4.6

You should now be able to:

- Describe how to determine the feeding service requirements and potential feeding providers in your community.
 - You will want to ask:
 - Where and when did the disaster happen?
 - How many people were affected?
 - Who was affected?
 - What percentage of the affected population will need feeding?
 - Who will you coordinate with to determine these requirements?
- List the types of resources and requirements for feeding.
- Identify available resources and providers to meet the requirements for Mass Care and Emergency Assistance feeding services during an event in your community.