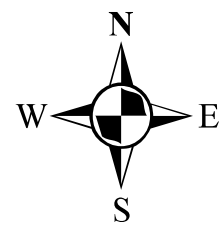


**Hancock County, Mississippi
Hurricane Surge Mapping
May 2010**

Plate 2

1 inch = 4,000 feet

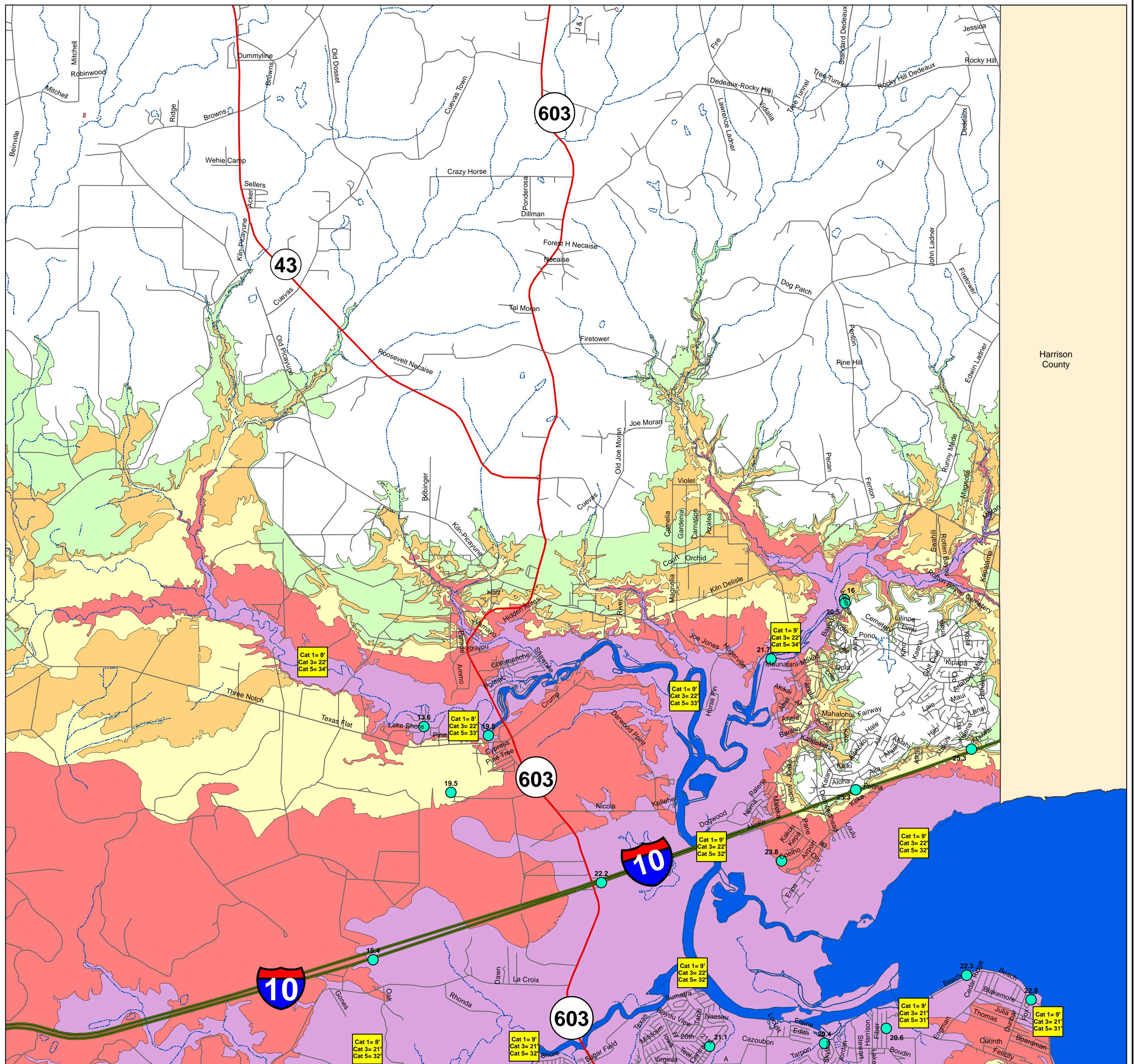
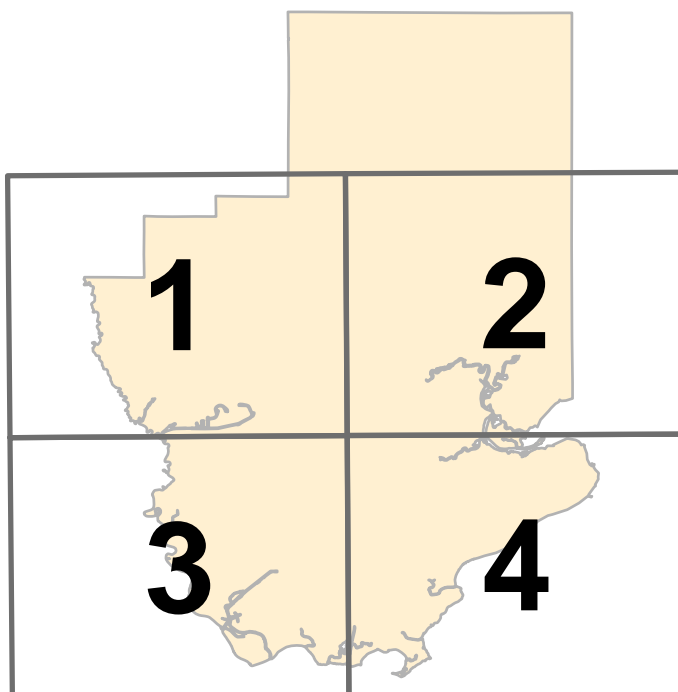


Legend

- Highways
- Interstates
- Roads
- Railroads
- Streams
- CAT 1 Surge
- CAT 2 Surge
- CAT 3 Surge
- CAT 4 Surge
- CAT 5 Surge
- SLOSH SURGE ELEVATION
- KATRINA HIGH WATER ELEVATION

NOTES:

1. Surge limits are based on still water storm tide elevations above National Geodetic Vertical Datum (NGVD) 1988.
2. Surge elevations were estimated by a 2008 SLOSH model and represent high tide with no wave action. The surge elevations are the maximum elevations of all storm scenarios run for that storm category, also referred to as the maximum of maximums or (MOMs) in feet above NGVD88.
3. Hurricane surge limits were determined by comparing the SLOSH model water surface elevations to the best available ground elevation data.



Harrison County