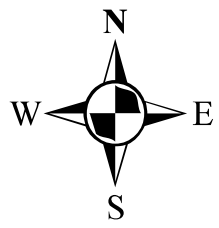


**Jackson County, Mississippi  
Hurricane Surge Mapping  
June 14, 2010**

**Plate 5**



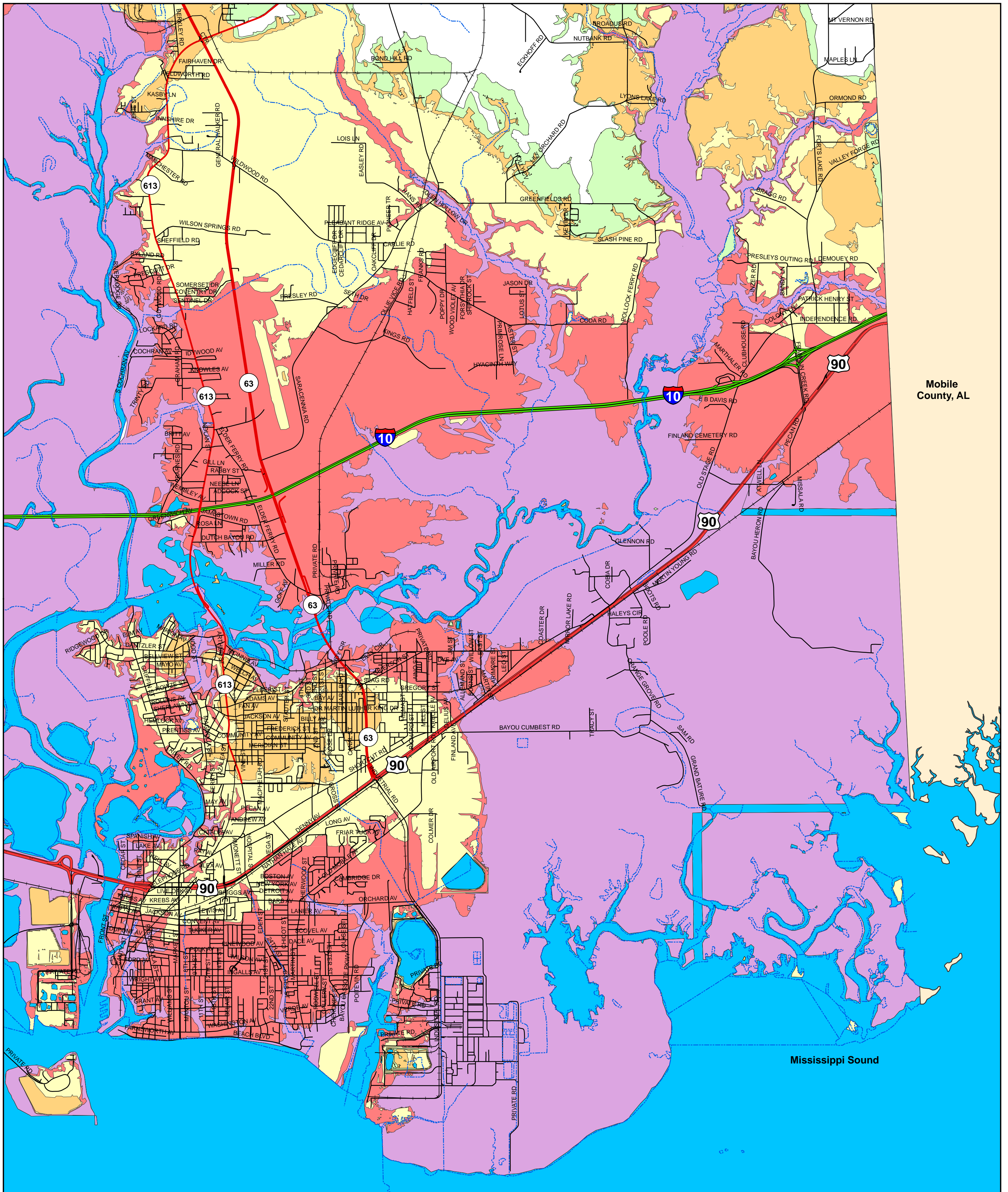
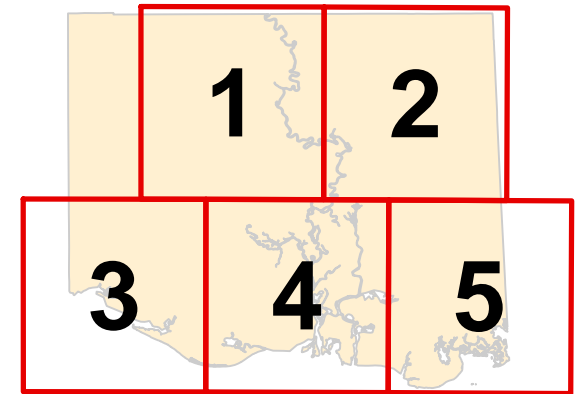
Legend			
	Highways		CAT 1 Surge
	Interstates		CAT 2 Surge
	Roads		CAT 3 Surge
	Railroads		CAT 4 Surge
	Streams		CAT 5 Surge

1 inch = 4,000 feet

**NOTES:**

1. Surge limits are based on still water storm tide elevations above National Geodetic Vertical Datum (NGVD) 1988.
2. Surge elevations were estimated by a 2008 SLOSH model and represent high tide with no wave action. The surge elevations are the maximum elevations of all storm scenarios run for that storm category, also referred to as the maximum of maximums or (MOMs) in feet above NGVD88.
3. Hurricane surge limits were determined by comparing the SLOSH model water surface elevations to the best available ground elevation data.

**Jackson County Plates**



Mobile  
County, AL

Mississippi Sound