

TABLE OF CONTENTS

Unit 7: Evacuation Decision Considerations

Introduction	7-1
Objectives	7-1
Methodology.....	7-1
Unit 7: Evacuation Decision Considerations	7-2
Decision-Making Process.....	7-3
Protective Action Decision-Making.....	7-4
Hurricane Evacuation Study.....	7-4
HES Planning Process.....	7-5
Forecast Factors	7-5
Rule of Thumb.....	7-6
Vulnerable Facilities	7-6
Who is Most Vulnerable?	7-7
Who Needs To Leave or Stay?	7-7
In-County vs. Out-of-County Evacuations.....	7-8
Risk Profile	7-8
Risk-Profiling Questions.....	7-9
Storm Probabilities and Direction.....	7-9
Storm Intensity Factors	7-10
Local Government Demographic and Storm Location Factors	7-10
Evacuation Timing Considerations.....	7-11
Regional Considerations	7-11
Regional Communications	7-12
Shelter Considerations.....	7-12
Activity 7:1—Guided Discussion—Current Issues	7-13
Lessons Learned.....	7-13

Unit 7: Evacuation Decision Considerations

Time: 85 minutes

INTRODUCTION

This unit will address what critical questions and considerations should be addressed by local government when a hurricane threatens. Evacuation decisions can make or break an emergency manager's career. Deciding to shelter in-place or issue evacuation warning orders is a difficult, challenging and sometimes costly process. Issuing evacuation orders involves assessing official NWS advisory products, identifying the potential impact areas, and communicating the risk to the public and responding agencies.

OBJECTIVES

At the conclusion of this unit, participants should be able to:

1. Explain the acronyms, terms and definitions relevant to this unit;
2. Explain the importance of documenting all decision-making actions to ensure confidence in the decision to issue, or not issue, evacuation warning orders;
3. Identify within your community who has decision-making authority and whether or not this authority is supported by local ordinance;
4. Identify citizens that should evacuate or shelter in-place based on vulnerability and potential storm impact/hazards;
5. Describe evacuation clearance time impact factors; and
6. Explain effective communication techniques and capabilities to ensure that citizens receive the warning orders.

METHODOLOGY

The instructor will provide a brief overview of the risk assessment decision-making process. Throughout the unit the instructor will facilitate discussion concerning the questions that decision-making officials must ask themselves in order to determine appropriate evacuations to be issued. Then the instructor will transition to the next unit.

Unit 7: Objectives

Unit 7: Objectives

At the conclusion of this unit, participants should be able to:

- ◆ Explain the acronyms, terms, and definitions relevant to this unit;
- ◆ Explain the importance of documenting all decision-making actions to ensure confidence in the decision to issue, or not to issue, evacuation warning orders;
- ◆ Identify within your community who has decision-making authority and whether or not this authority is supported by local ordinance;
- ◆ Identify citizens who should evacuate or shelter in-place, based on vulnerability and potential storm impact/hazards;
- ◆ Describe evacuation-clearance-time impact factors; and
- ◆ Explain effective communication techniques and capabilities to ensure that citizens receive the warning orders.

FEMA Hurricane Readiness - Coastal Communities 7-1

Visual 7-1

Notes:

Unit 7: Evacuation Decision Considerations

Unit 7: Evacuation Decision Considerations

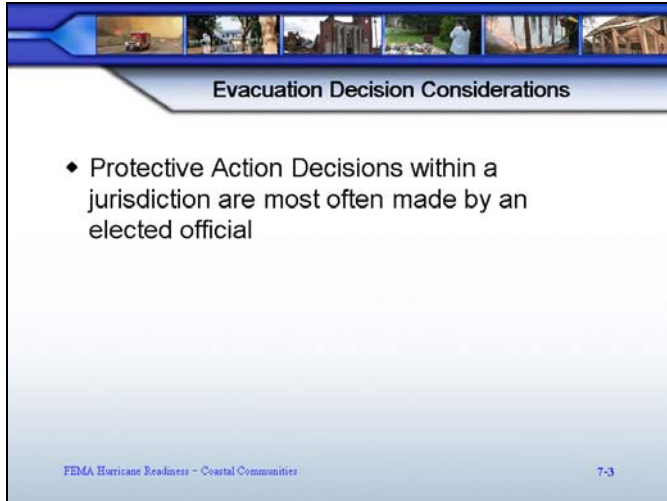
- ◆ Decision-Making Authority Issues
- ◆ Hurricane Evacuation Study
- ◆ Evacuation Clearance Times
- ◆ Hurricane Action Template
- ◆ Communications
- ◆ Examples of Decision-Making Process
- ◆ Evacuation Liaison Team (ELT)
- ◆ Other Protective Measures
- ◆ Activity 7.1—Guided Discussion—Current Issues
- ◆ Lessons Learned

FEMA Hurricane Readiness - Coastal Communities 7-2

Visual 7-2

Notes:

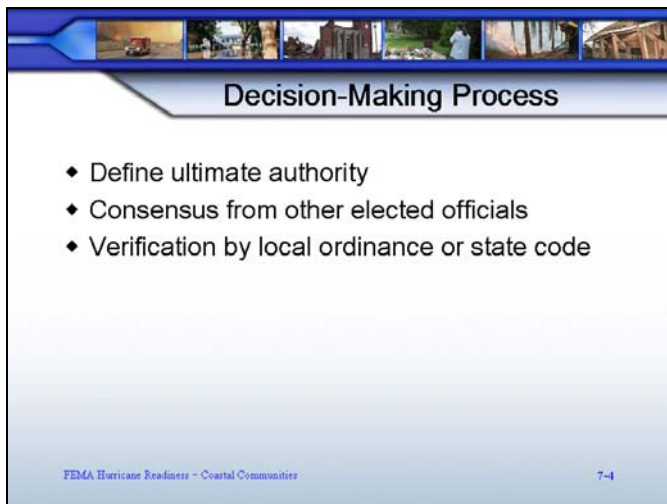
Evacuation Decision Considerations (cont'd.)



Visual 7-3

Notes:

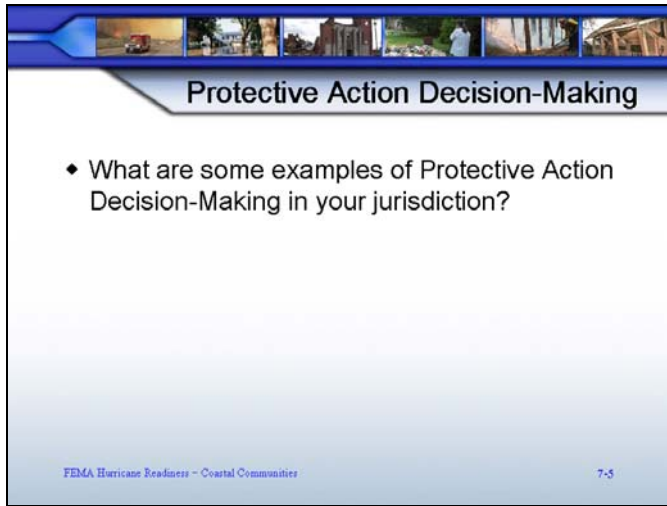
Decision-Making Process



Visual 7-4

Notes:

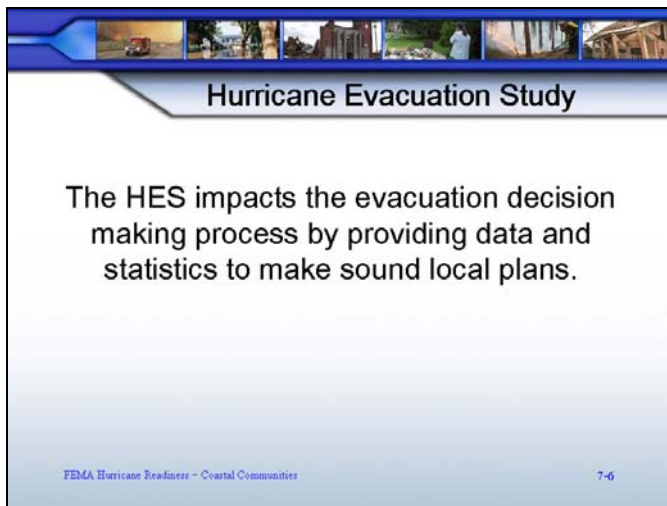
Protective Action Decision-Making



Visual 7-5

Notes:

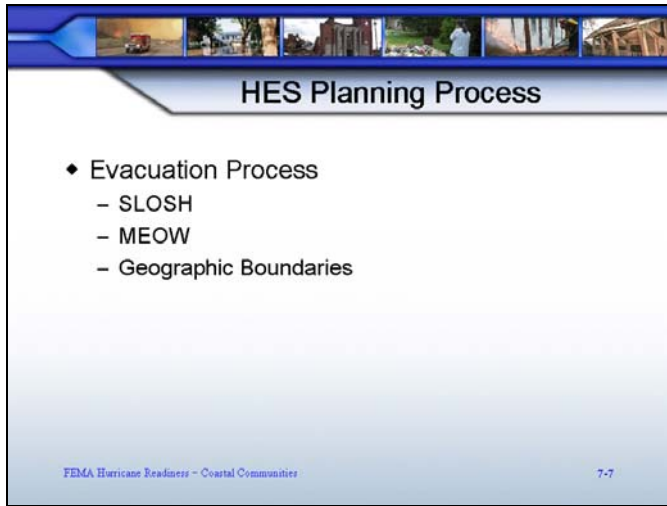
Hurricane Evacuation Study



Visual 7-6

Notes:

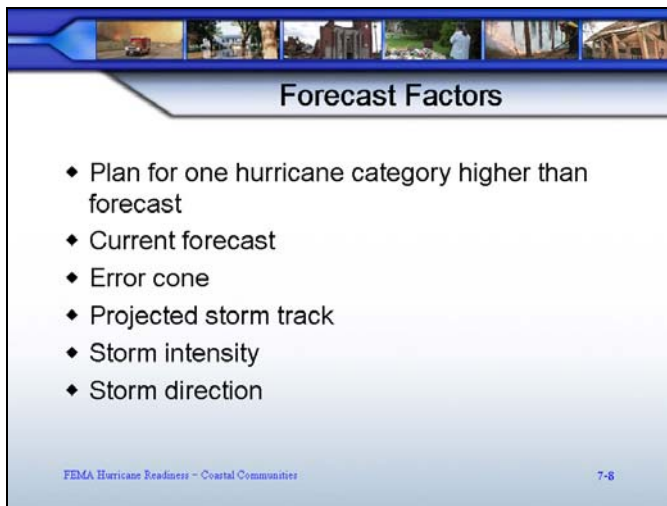
HES Planning Process



Visual 7-7

Notes:

Forecast Factors



Visual 7-8

Notes:

Rule of Thumb

Rule of Thumb

- ◆ Run from the water (storm surge/flooding)
- ◆ Hide from the wind
- ◆ Evacuation should focus on the flood-prone areas

FEMA Hurricane Readiness - Coastal Communities 7-9

Visual 7-9

Notes:

Vulnerable Facilities

Vulnerable Facilities

- ◆ Mobile Homes
- ◆ Substandard Construction
- ◆ Manufactured Housing
- ◆ Special Needs Populations
- ◆ Isolated Areas
- ◆ Tourist Areas
- ◆ Special Events
- ◆ Highrises
- ◆ Historic Communities

FEMA Hurricane Readiness - Coastal Communities 7-10

Visual 7-10

Notes: