

Who Is Most Vulnerable?

Who Is Most Vulnerable?

- ◆ What are some examples in your community of vulnerable populations?

FEMA Hurricane Readiness - Coastal Communities 7-11

Visual 7-11

Notes:

Who Needs To Leave or Stay?

Who Needs to Leave or Stay?

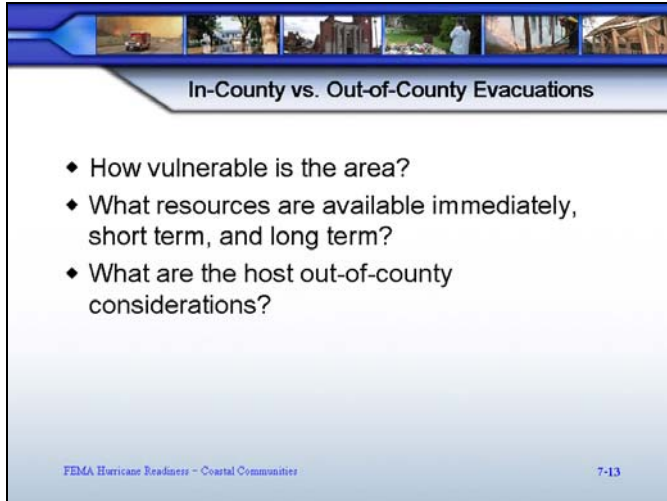
- ◆ Basic Questions
 - Do they live in a storm surge area?
 - What structures will withstand the winds?
 - What areas are most susceptible to inland flooding?
 - Community isolation
 - Who should leave first?

FEMA Hurricane Readiness - Coastal Communities 7-12

Visual 7-12

Notes:

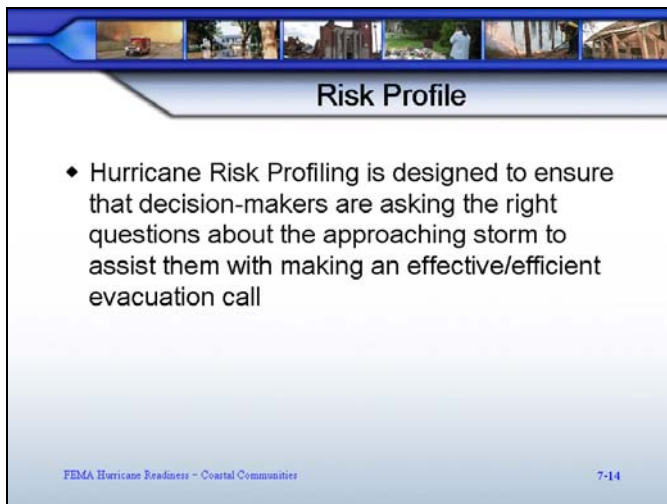
In-County vs. Out-of-County Evacuations



Visual 7-13

Notes:

Risk Profile



Visual 7-14

Notes:

Risk-Profiling Questions

Risk Profiling Questions

- ◆ What is the storm strike probability and direction?
- ◆ What are the storm intensity factors?
- ◆ What are the current county demographics and storm impact predictors?

FEMA Hurricane Readiness - Coastal Communities 7-15

Visual 7-15

Notes:

Storm Probabilities and Direction

Storm Probabilities and Direction

- ◆ Are strike and wind probabilities increasing for your jurisdiction?
- ◆ What are your relative wind and strike probabilities?
- ◆ Major cities may be forced to evacuate before watches and warnings are issued
- ◆ What is the local government's status within the 72-hour average forecast error cone?

FEMA Hurricane Readiness - Coastal Communities 7-16

Visual 7-16

Notes:

Storm Intensity Factors

Storm Intensity Factors

- ◆ What is the current intensity of the storm?
- ◆ How is the storm intensity forecast predicted to change before landfall?
- ◆ How has the storm intensified over the last three advisories?
- ◆ What is the storm's peak intensity forecast predicted to be within 5 mph of the next Saffir-Simpson category level?

FEMA Hurricane Readiness - Coastal Communities 7-17

Visual 7-17

Notes:

Local Government Demographic and Storm Location Factors

Local Government Demographic and Storm Location Factors

- ◆ How many hours until the tropical cyclone force winds hit?
- ◆ What is the forward speed of the storm, and has it slowed or increased?
- ◆ What is the potential storm surge level?
- ◆ What is the local government's clearance time (one-way options)?
- ◆ What is the tourist population?

FEMA Hurricane Readiness - Coastal Communities 7-18

Visual 7-18

Notes:

Evacuation Timing Considerations

- ♦ Time of day
- ♦ Weather
- ♦ Traffic control
- ♦ Signage
- ♦ Traffic signals or manual decision
- ♦ Multiple storm fatigue
- ♦ Office and school closings
- ♦ Shelter availability
- ♦ Rail crossing on shelter routes

Visual 7-19

Notes:

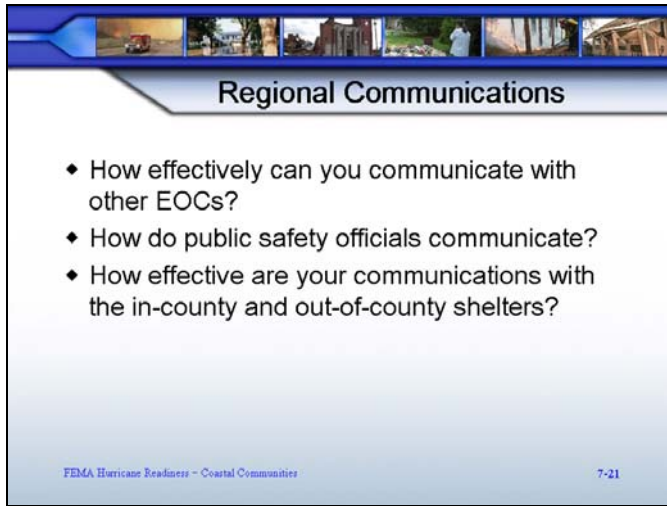
Regional Considerations

- ♦ Evacuation decisions by one jurisdiction can and do affect others
- ♦ Inter-county and inter-state coordination is necessary
- ♦ Inland officials must be given adequate notice to absorb the impact of other jurisdictions' decisions
- ♦ State agencies should provide leadership

Visual 7-20

Notes:

Regional Communications



Regional Communications

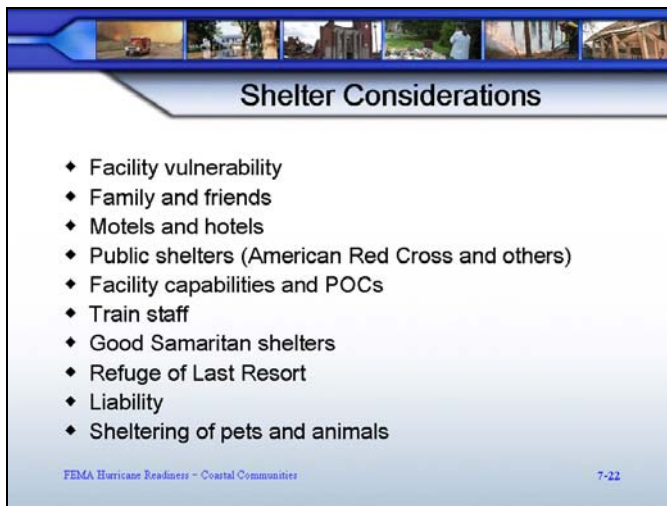
- ◆ How effectively can you communicate with other EOCs?
- ◆ How do public safety officials communicate?
- ◆ How effective are your communications with the in-county and out-of-county shelters?

FEMA Hurricane Readiness - Coastal Communities 7-21

Visual 7-21

Notes:

Shelter Considerations



Shelter Considerations

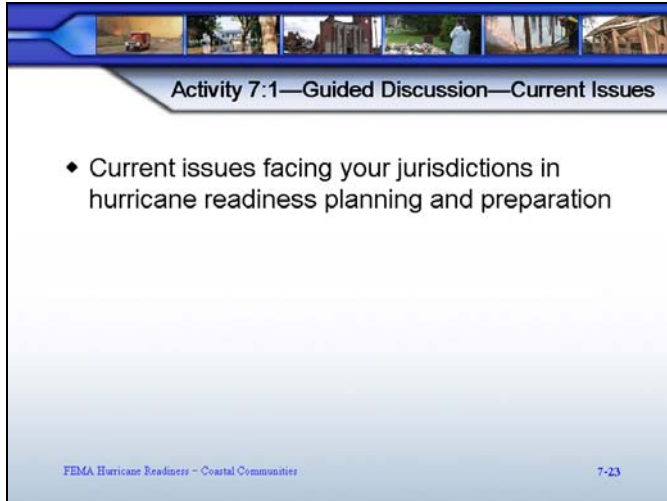
- ◆ Facility vulnerability
- ◆ Family and friends
- ◆ Motels and hotels
- ◆ Public shelters (American Red Cross and others)
- ◆ Facility capabilities and POCs
- ◆ Train staff
- ◆ Good Samaritan shelters
- ◆ Refuge of Last Resort
- ◆ Liability
- ◆ Sheltering of pets and animals

FEMA Hurricane Readiness - Coastal Communities 7-22

Visual 7-22

Notes:

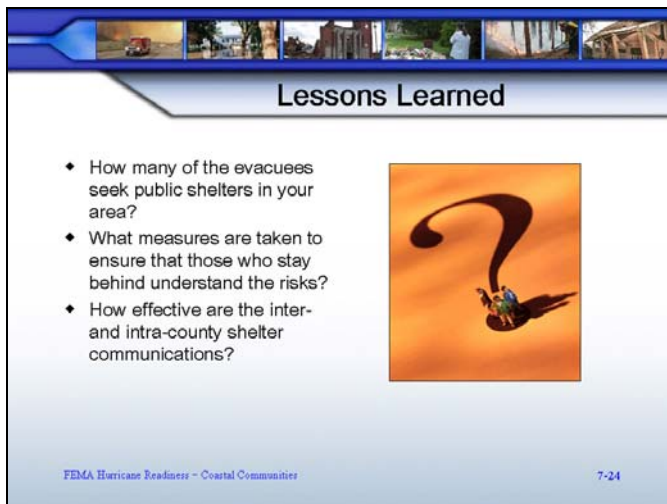
Activity 7:1—Guided Discussion— Current Issues



Visual 7-23

Notes:

Lessons Learned



Visual 7-24

Notes:

Transition to Unit 8: Re-entry	Notes: