

Unit 1: Introduction to Recovery Concepts



FEMA

Unit Objectives

After completing this unit, you will be able to:

1. Explain key concepts of the National Disaster Recovery Framework and how they affect your community.
2. Describe how your roles and responsibilities change as the disaster transitions from response to recovery.
3. Define key recovery terms and concepts, including Whole Community and Community Resilience.
4. Differentiate between pre- and post-disaster recovery plans.



FEMA

Activity 1.1 - Your Role in Recovery

Purpose: To identify changing roles and responsibilities as the community moves from response to recovery.

Instructions: Working individually, first imagine your day to day responsibilities. Next, view the “Your Role in Recovery” video and complete the following:

- Describe how your professional roles and responsibilities would change from your day-to-day operational duties to your likely roles and responsibilities during recovery from the disaster scene in the “Your Role in Recovery” video.
- Be prepared to provide a 1 minute summary to the class.



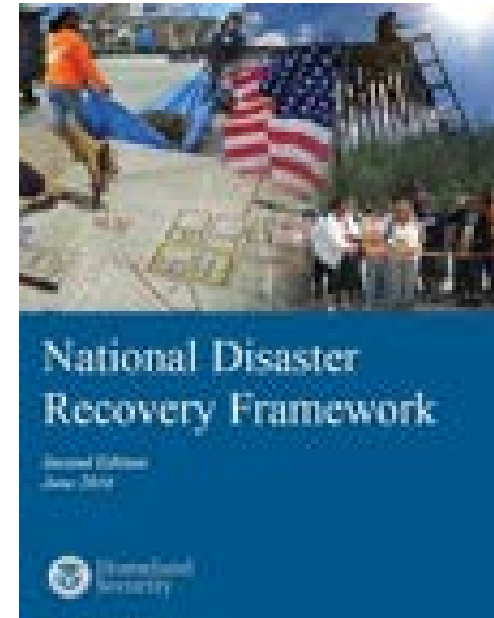
Activity Video: Your Role in Recovery



FEMA

National Disaster Recovery Framework

Provides guidance on how all levels of government will work together following a disaster.



FEMA

Introducing National Disaster Recovery Framework

<http://www.fema.gov/media-library/assets/videos/79189>



FEMA

National Disaster Recovery Framework

Framework:

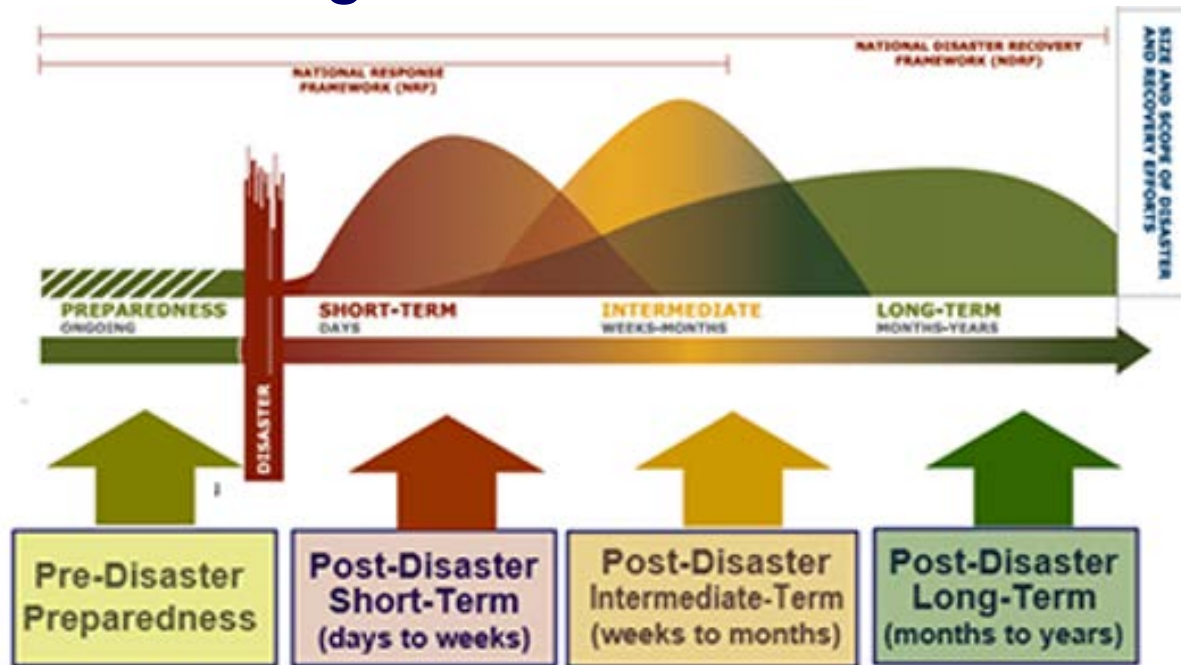
- Recovery Guiding Principles
- Roles and responsibilities
- Core Capabilities
- Coordinating structure
- Planning guidance
- Overall process for sustainability



FEMA

NDRF Recovery Continuum

Includes four stages of activities



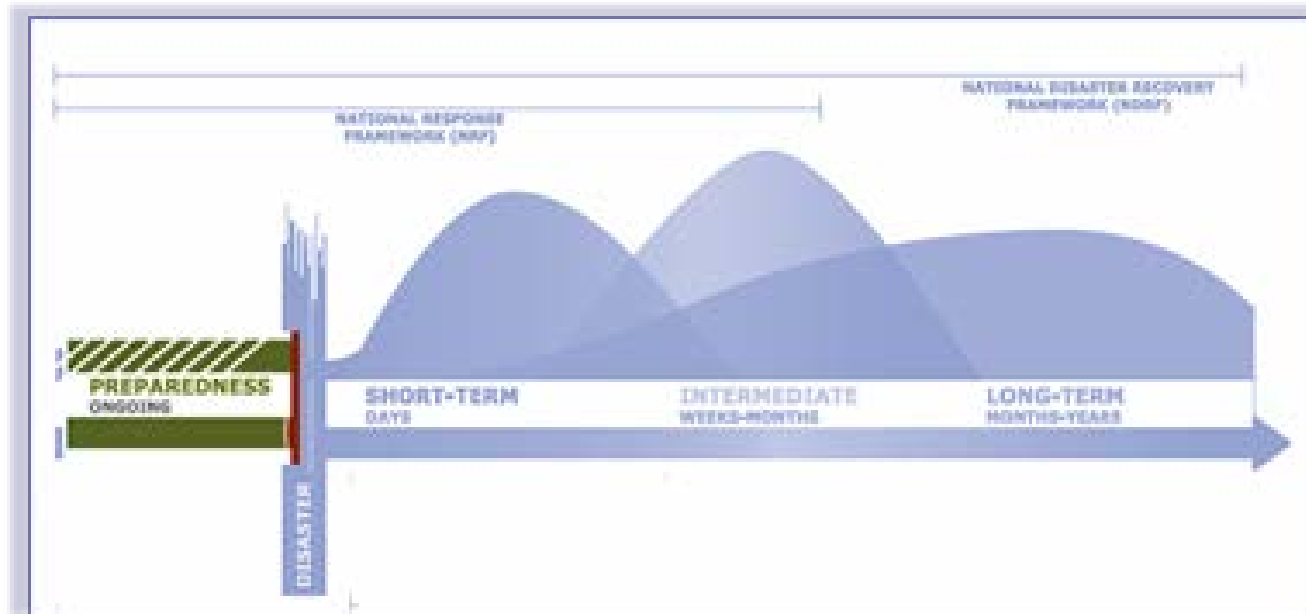
...*Adapted from Federal Emergency Management Agency, 2016, Figure 1. Recovery Continuum – description of activities by phase, p. 11



FEMA

Pre-Disaster Preparedness

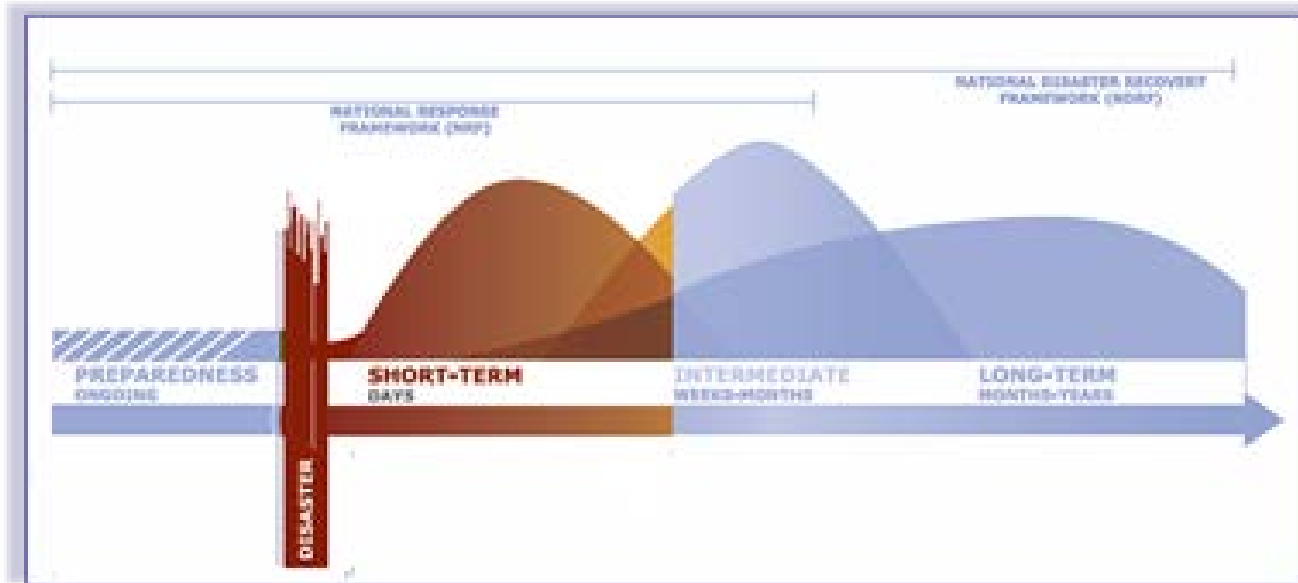
- Pre-disaster recovery planning
- Mitigation planning and implementation



FEMA

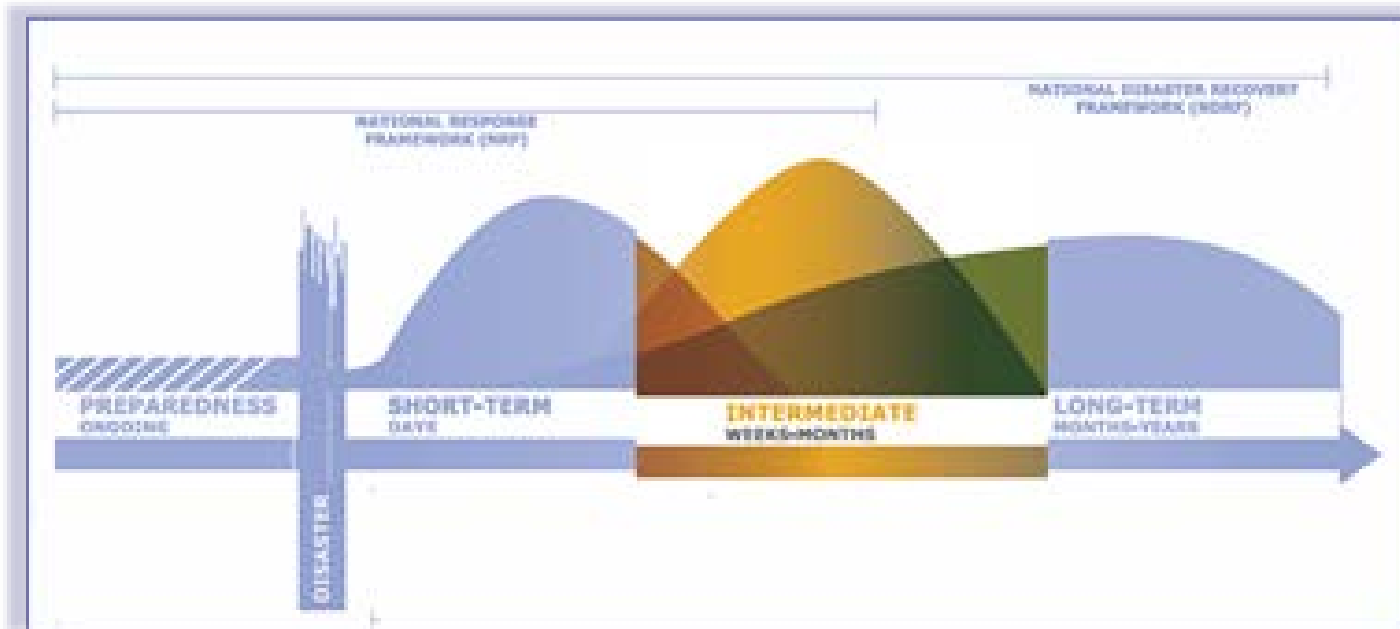
Post-Disaster Short-Term (Days-Weeks)

- Mass Care/Sheltering
- Debris Clearance



Post-Disaster Intermediate-Term (Weeks-Months)

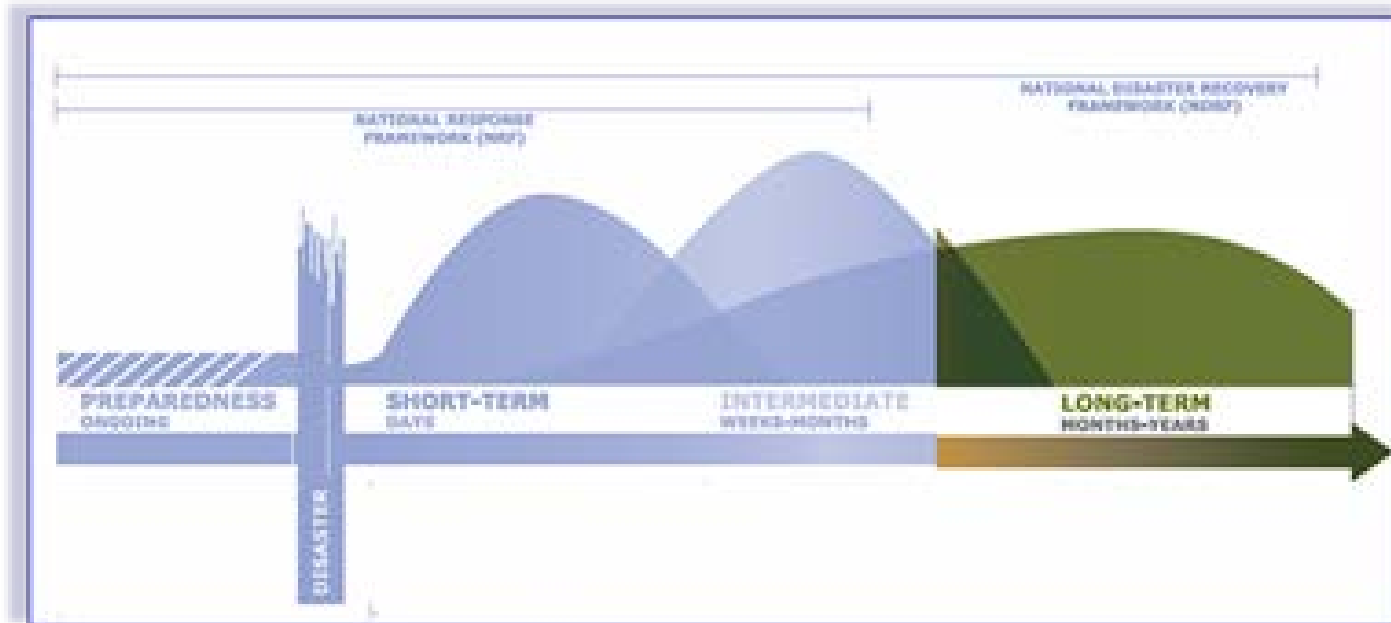
- Interim Housing
- Infrastructure Repair



FEMA

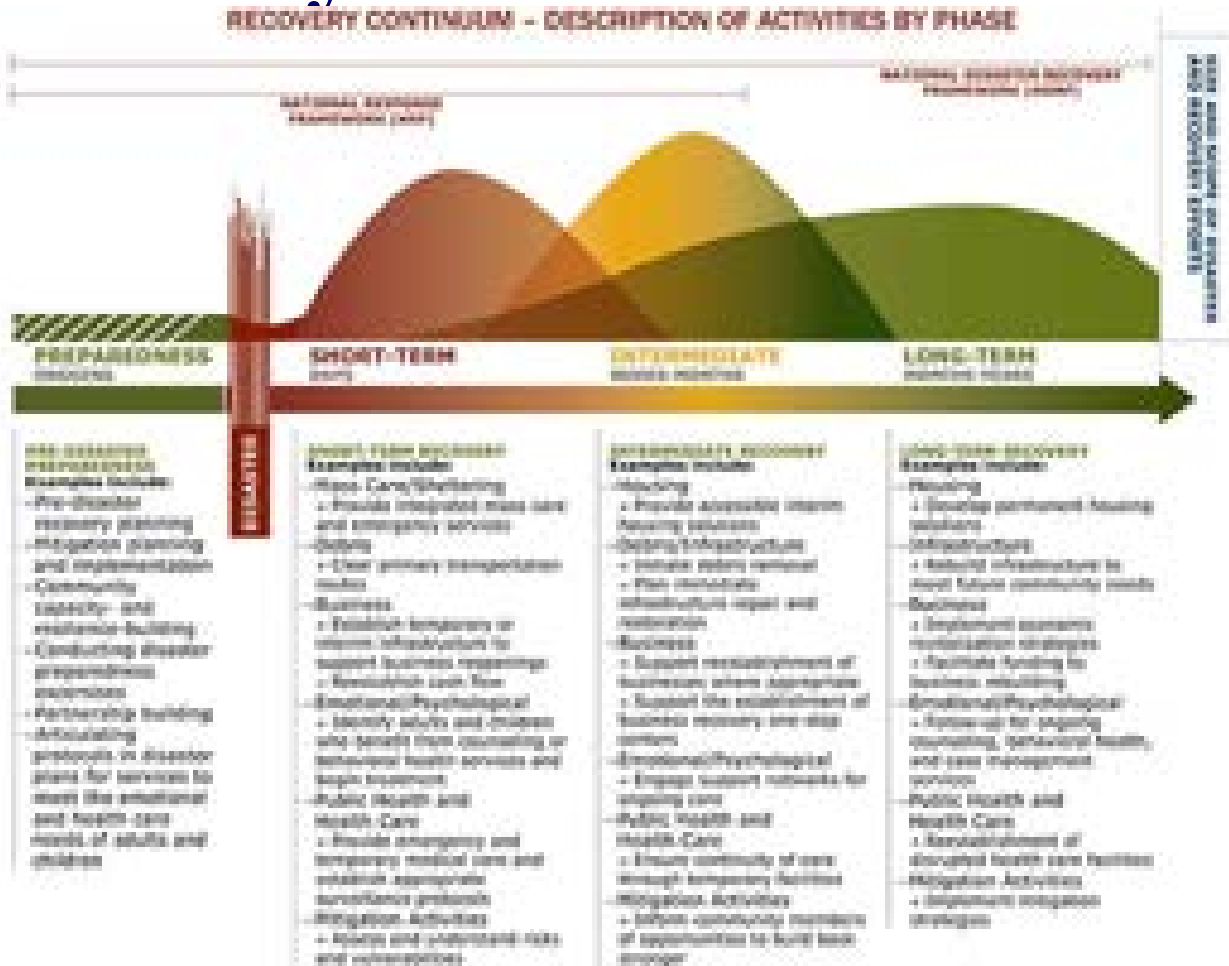
Post-Disaster Long-Term (Months-Years)

- Permanent Housing
- Infrastructure Rebuilding



FEMA

Recovery Continuum - Description of Activities By Phase



FEMA

Recovery Guidance

Whole Community Approach



FEMA

Federal Legislation

Robert T. Stafford Disaster Relief and Emergency Assistance Act

The Stafford Act

Robert T. Stafford
Disaster Relief and Emergency
Assistance Act, as Amended

April 2013



FEMA

Sandy Recovery Improvement Act of 2013

January 2013 - Congress passed the Sandy Recovery Improvement Act authorizing several significant changes to the way FEMA delivers disaster assistance.

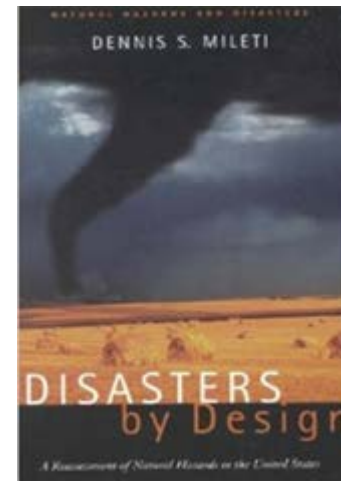


FEMA

Recovery: Not Just Building Back

Historically, disaster recovery was defined as efforts to put the physical community back together again.

Contemporary perspective is that disaster recovery is a “social process” encompassing decision making about restoration and reconstruction activities.



FEMA

Disaster Resilience Defined



Greensburg,
Kansas
May 2007

Greensburg, Kansas
Today



FEMA

Disaster Resilience: Greensburg Kansas

<https://www.youtube.com/watch?v=9x9IHA7TeQ>



FEMA

Disaster Resilience Defined

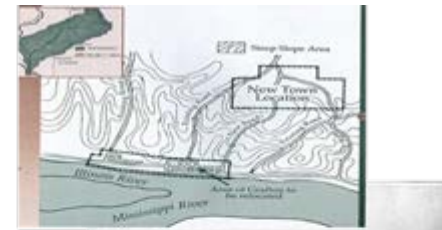
Local resiliency with regard to disaster means that a locale is able to withstand an extreme natural event without suffering devastating losses, damage, diminished productivity, or quality of life and without a large amount of assistance from outside the community.



FEMA

Characteristics of Resilience

What are the characteristics of resilient communities?



FEMA

Characteristics of Resilience

- Redundant
- Diverse
- Efficient
- Autonomous
- Strong
- Interdependent
- Adaptable
- Collaborative



Building Resiliency into Recovery

Sharing a focus -
Mitigation and Recovery:

- Economic
- Housing
- Natural and Cultural Resources
- Infrastructure Systems
- Health and Social Services
- Government sectors



FEMA

Types of Recovery Plans

The American Planning Association identifies three types of recovery plans.

- Operational (limited pre-disaster)
- Policy (pre-disaster)
- Recovery (post-disaster)



Policy (pre-disaster)

- Structure for managing recovery
- General policies and guidelines
- Hazard mitigation
- Adjustments in land-use policy and priorities
- Policies for funding of recovery activities.
- Identify recovery resources

Focus on issues that communities will face regardless of the specific pattern of destruction a disaster may cause.

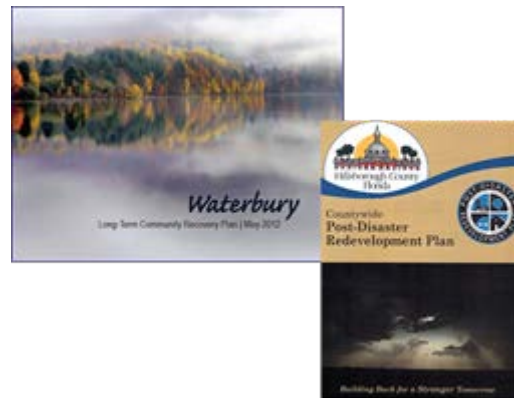


Recovery (post-disaster)

- Developed after disaster has occurred to deal directly with the known consequences.
- The distinguishing feature of post-disaster plans is not only the timing of their preparation, but their orientation toward physical planning and urban design.



Activity 1.2: Review of Pre-and Post-Disaster Recovery Plans



FEMA

Activity 1.2 - Review of Pre-and Post-Disaster Recovery Plans

- **Purpose:** Assess the differences between pre- and post-disaster recovery Plans and identify the benefits of each.
- **Instructions:** Table groups have two plans, a pre-disaster and post-disaster. You will have 30 minutes to compare and contrast the two plans. Select a spokesperson to provide a five-minute summation to the class.



L0205 Unit Summary

In this unit you have learned about:

- The National Disaster Recovery Framework
- Key recovery planning terminology and concepts including Whole Community and Community Resilience
- The differences between pre- and post-disaster recovery plans.



FEMA