
Mississippi Emergency Support Function #12 – Energy Annex

ESF #12 Coordinator

Mississippi Public Utilities Staff

Primary Agencies

Mississippi Public Utilities Staff

Support Agencies

Mississippi Emergency Management Agency
Mississippi Public Service Commission
Mississippi Military Department
Mississippi Development Authority, Energy
Division

Federal ESF Coordinator

Department of Energy (DOE)

Federal Primary Agency

Department of Energy (DOE)

Private Sector Partners

Tennessee Valley Authority
Mississippi Power Company
Entergy Mississippi
ATMOS Energy
Municipal Energy Associations of Mississippi
Center point Energy
Plantation Pipeline (Kinder Morgan)
Colonial Pipeline
Electric Power Associations of Mississippi
Propane Suppliers of Mississippi

Introduction

Purpose

This Emergency Support Function (ESF) is intended to facilitate restoration of the state's energy and utility systems following a major disaster, such as a catastrophic earthquake, hurricane, ice storm, or other significant event requiring state assistance.

Scope

ESF #12 addresses significant disruptions in energy supplies for any reason, whether caused by physical disruption of energy transmission and distribution systems, unexpected operational failure of such systems, or unusual economic or international political events.

This ESF is applicable to the producing, refining, transporting, generating, transmitting, conserving, building, distributing, and maintaining of energy systems and system components. In this capacity, ESF #12 serves to collect, evaluate, and share information on the impact of energy system outages as well as on the progress of the energy restoration process, to include projected schedules for restoration of power, percent completion of restoration, and geographic information on the restoration.

Relationship to the Whole Community

This section describes how ESF #12 relates to other elements of the whole community.

Mississippi Emergency Support Function #12 – Energy Annex

Local, State, Tribal, Territorial, and Insular Area Governments

- When activated, ESF #12 personnel may deploy to local, state, tribal, territorial, or insular area emergency operations centers.
- Assists local, state, tribal, territorial, and insular area governments with requests for energy-related emergency response actions as required to meet the Nation’s energy demands, and, through DOE, the Energy Sector-Specific Agency works to identify interdependencies and cascading impacts to other jurisdictions and critical sectors.
- Local, state, tribal, territorial, and insular area governments, in coordination with energy asset owners and operators, have primary responsibility for prioritizing the reestablishment of critical infrastructure. They are integrated into ESF #12 operations.

Private Sector/Nongovernmental Organizations

- Stabilization and reestablishment of normal operations at energy facilities is the responsibility of the facility owners and operators.
- Private sector energy asset owners and operators are primarily responsible for the stabilization of infrastructure-related services after an incident occurs.
- For Stafford Act events, ESF #12, through consultation with DOE Headquarters, is the Federal point of contact with the energy industry for information sharing and requests for assistance from private- and public sector energy owners and operators.

Core Capabilities and Actions

ESF Roles Aligned to Core Capabilities

The following table lists the Response core capability that ESF #12 most directly supports, along with the related ESF #12 actions. Though not listed in the table, all ESFs, including ESF #1, support the Core Capabilities of Planning, Operational Coordination, and Public Information and Warning.

Core Capability	ESF #12 - Energy
Infrastructure Systems	<ul style="list-style-type: none">• Assists energy asset owners and operators and local, state, tribal, and territorial authorities with requests for emergency response actions as required to meet the Nation’s energy demands.• Identifies supporting resources needed to stabilize and reestablish energy systems.• Assists Federal departments and agencies by locating fuel for transportation, communications, emergency operations, and national defense, pursuant to the authorities available to the agency providing assistance.• In coordination with the Energy Sector-Specific Agency (DOE), addresses significant disruptions in energy supplies for any reason, whether caused by physical disruption of energy transmission and distribution systems, unexpected operational failure of such systems, acts of terrorism or sabotage, or unusual economic, international, or political events.• In coordination with the Energy Sector-Specific Agency (DOE), addresses the impact that damage to an energy system in one geographic region may

Mississippi Emergency Support Function #12 – Energy Annex

	<p>have on energy supplies, systems, and components in other regions relying on the same system.</p> <ul style="list-style-type: none">• In consultation with energy asset owners and operators and the Energy Sector-Specific Agency (DOE), advises local, state, tribal, territorial, insular area, and Federal authorities on priorities for energy system reestablishment, assistance, and supply during response operations.
Public and Private Services and Resources	<ul style="list-style-type: none">• Provides subject-matter expertise to the private sector as requested to assist in stabilization and reestablishment efforts.• Through coordination with DOE, (refer to Primary Agency Functions), serves as a Federal point of contact with the energy industry for information sharing and requests for assistance from private and public sector owners and operators.
Situational Assessment	<ul style="list-style-type: none">• Works with the DHS/FEMA Regions, the private sector, local, state, tribal, territorial, and insular area authorities to develop procedures and products that improve situational awareness to effectively respond to a disruption of the energy sector.• Coordinates preliminary damage assessments in the energy sector.• Identifies requirements to repair energy systems and monitors repair work.• Through coordination with DOE, ESF #12:<ul style="list-style-type: none">– Serves as a source for reporting of critical energy infrastructure damage and operating status for the energy systems within an impacted area, as well as on regional and national energy systems.– Assesses the energy impacts of the incident and provides analysis of the extent and duration of energy shortfalls.– Analyzes and models the potential impacts to the electric power, oil, natural gas, and coal infrastructures, and determines the effect a disruption has on other critical infrastructure.

Policies

- It is recognized that the impact of a major natural disaster or a technological or other man-made event affecting one or more areas of the state could result in an energy emergency when demand for electricity, fuel, or any other material related to energy production exceeds the available supply. The secondary effects of damage to energy systems in the state could render local support systems inoperable for a prolonged period.
- Dispersed and widespread damage from a disaster will hinder restoration of energy-producing facilities, which can directly impact other critical facilities and systems such as transportation, communications, and utility systems. Failure of these systems has a direct effect on a community's ability to recover from a disaster which is why timely restoration of energy supply systems is vital.
- ESF #12 shall be activated if an emergency or major disaster should overwhelm the resources and capabilities of energy systems and agencies at the local level. Response actions under ESF #12 are carried out with the purpose of maintaining the integrity of the energy system and minimizing the impact on Mississippi citizens and visitors.
- ESF #12 involves close coordination with utility companies operating in the state to ensure that the power supply systems are maintained during emergency situations and that any damages are repaired and services restored in an efficient and expedient manner afterward.

Mississippi Emergency Support Function #12 – Energy Annex

- ESF #12 maintains lists of energy-centric critical assets and infrastructures, and it continuously monitors those resources to identify and correct vulnerabilities to energy facilities.

Concept of Operations

General

While restoration of normal operations at energy facilities is the primary responsibility of the facility owners, ESF #12 provides the appropriate supplemental state assistance and resources to facilitate restoration in a timely manner. Key functions under this ESF are as follows:

- The Mississippi Emergency Management Agency (MEMA) will keep all responsible ESF #12 agencies informed of all impending conditions (utility outages, weather, or other event) that would require them to assume a posture of readiness for State Emergency Operations Center (SEOC) activation, possible deployment to the field, or other activity.
- Mississippi Public Utilities Staff (MPUS) is the primary agency designated to coordinate energy emergency response and restoration activities.
- ESF #12 will serve as the focal point within the State government for the receipt of information on actual or potential damage to energy supply and distribution systems, on requirements for system design and operations, and on procedures for preparedness, prevention, recovery, and restoration.
- ESF #12 agencies will advise state, local, and tribal authorities on priorities for energy restoration, assistance, and supply.
- When ESF #12 is activated, ESF #5 and other appropriate ESFs will be activated to support the event. The SEOC will also be activated at the appropriate level (I-IV) for the energy-related emergency.
- Local governments may request generators from the SEOC to use at various critical locations and government owned facilities until local utility systems can resume full-service to their customers.
- MPUS will develop and maintain alert and notification procedures for key energy officials supporting ESF #12. MEMA will assist MPUS in maintaining the notification list for those other agencies supporting ESF #12.
- Working in conjunction with ESF #5, MEMA will release through ESF #15 special utility/energy statements. MEMA will also issue conservation bulletins and warnings provided by ESF #12 via the Emergency Alert System (EAS).

Organization

State Emergency Operations Center

ESF #12 is part of the SEOC Operations Section, Infrastructure Branch.

Field Units

Mississippi Emergency Support Function #12 – Energy Annex

ESF #12 may be asked to provide personnel to the Joint Field Office (JFO) to work closely with their federal counterparts.

Administrative and Logistical Support

All participating ESF #12 agencies are expected to:

- Locate, identify, and set up their own operational work areas and maintain logistical support for them.
- Attend and support briefings and other coordination meetings, whether at the SEOC or elsewhere.
- Maintain operational logs, messages, requests, and other appropriate documentation for future reference.
- Maintain their own maps, displays, status reports, and other information not included in the ESF #5 operations.
- Keep record of the costs of all available, acquired, and contracted resources incurred during support activities for emergency or major disaster operations for reporting purposes and potential reimbursement.
- Ensure that their financial management system, automated or otherwise, used to capture their incurred costs during an emergency, major disaster, or exercise is in compliance with applicable agency, state, and federal guidelines, rules, standards, and laws. Reimbursement of incurred costs is subject to audit.

Actions

Preparedness

Agencies with ESF #12 responsibilities, whether primary or support, are expected to:

- Ensure that they have Standard Operating Procedures (SOPs) in place to enable them to perform appropriate levels of mitigation, preparedness, response, and recovery that a given disaster or emergency may require, in accordance with The Emergency Management Law, MS Code Ann. § 33-15 (1972).
- Complete mitigation and preparedness measures prior to an actual emergency or disaster.
- Assign and train personnel to support emergency operations at the SEOC, State Hurricane Support Center (SHSC), State Earthquake Support Center (SESC), Joint Field Office (JFO), Mississippi Incident Management Assistance Team (MS IMAT) or other areas of operation.
- Develop and, where possible, implement standards for physical and operational security for the energy industry in the state.
- Conduct energy emergency exercises with the energy industry in the state and involving local agencies.

Mississippi Emergency Support Function #12 – Energy Annex

Pre-Incident

Provide an Emergency Coordinating Officer (ECO) (and alternate if 24 hour coverage is necessary) and ESF #12 liaison to the SEOC.

Incident

- In response to an emergency, MPUS will appoint an ECO to work in conjunction with MEMA, other state agencies, and federal agencies in an emergency capacity at the SEOC.
- Upon activation of ESF #12, the ECO will communicate this information to all other ESF #12 members.
- Ensure adequate communications are established and maintained.
- Obtain an initial situation and damage assessment through established intelligence procedures.
- Coordinate the efforts through a liaison to ESF #5.
- Assist in gathering and providing information to ESF #5 for establishing priorities.
- Assist in gathering and providing information to ESF #15 for press releases.
- If state emergency energy resources are in danger of being exhausted, the ECO may recommend that assistance be requested from other states through the Emergency Management Assistance Compact (EMAC), or the federal government through the Federal Emergency Management Agency (FEMA). EMAC will be implemented in the event of a major disaster or any emergency that overwhelms the identified energy resources of this state. This process will be coordinated by MEMA.
- Each agency that is taking action in response to an energy emergency must coordinate its support with ESF #12. ESF #12 will coordinate these responses in an effort to:
 - Provide sufficient power and fuel supplies to state agencies, response organizations, and areas along evacuation routes.
 - Provide, to the extent possible, materials, supplies, and personnel for the support of emergency activities being conducted by local EOCs or state ESFs as requested through the SEOC.
 - Establish and maintain communication with utility representatives and/or fuel suppliers to determine response and recovery needs.
 - Assist the Mississippi Department of Human Services (MDHS), the American Red Cross (ARC), and local emergency operations centers (EOCs) to identify emergency power needs for shelters or other facilities.
 - Work in coordination with federal ESF #12 personnel if a JFO and/or other support facilities is/are established.

Mississippi Emergency Support Function #12 – Energy Annex

- Assist in gathering and providing information to ESF #5 for establishing operational priorities and to ESF #15 for press releases.

Recovery

Emergency ESF #12 personnel will mobilize to direct and coordinate relief efforts, to communicate with the public and appropriate governmental agencies, and to facilitate restoration of normal service. During the recovery phase of a disaster or emergency, ESF #12 will:

- Coordinate efforts to provide for resources requested by local, state, and federal agencies for emergency power and fuel needs.
- Review recovery actions and develop strategies for meeting local and state energy needs.
- Monitor local, state, and utility actions.
- Receive and assess requests for aid from local, state, and federal agencies, and from energy offices, energy suppliers, and distributors.
- Claim resources needed to repair damaged energy systems, when appropriate.
- Work with all state and local emergency organizations to establish priorities for repairing damaged energy systems.
- Update state and local news organizations through MEMA with assessments of energy supply, demand, and requirements to repair or restore energy systems.
- Keep accurate logs and other records of emergency responses.

Post-Incident

- Agencies with ESF #12 responsibilities will draft recommendations and other reports as appropriate.
- ESF #12 agencies will participate in post-hazard mitigation studies to reduce the effects of any future disasters.
- Prepare an after-action report (AAR). The AAR identifies key problems, indicates how they will be or were solved, and makes recommendations for improving ESF response operations. All ESF #12 organizations assist in preparation of the AAR.

Responsibilities

Mississippi Public Utilities Staff –Coordinator/Primary Agency

- Develop an SOP and checklist in conjunction with MEMA and supporting agencies for this ESF.
- Staff the SEOC for coordinating state (and federal) energy emergency support.

Mississippi Emergency Support Function #12 – Energy Annex

- Assess availability of energy resources (petroleum, liquid petroleum, natural gas, and/or electrical power) and the demand for those resources by sector.
- Implement energy emergency procedures for reducing demand when necessary.
- Provide technical assistance to utility companies and advisory committees.
- Work closely with other state/private energy/utility companies to coordinate and implement response and to assess impact and damage.
- Allocate fuel.
- Provide personnel for the MS IMAT for supporting ESF #12 requirements.

Support Agencies

Agency	Functions
Mississippi Public Service Commission	<ul style="list-style-type: none">• Provide qualified personnel for assessing impact and damage to pipelines and other regulated utility systems.• Issue fuel waivers.
Mississippi Emergency Management Agency	<ul style="list-style-type: none">• Coordinate with the MPUS and other state agencies to identify state energy resources.• Report to the Governor on current and continuing functions, problems, and activities concerning energy resources.• Provide standardized generator request forms that will be used at the SEOC to process all local government generator requests.
Mississippi Military Department	<ul style="list-style-type: none">• Assist in transportation of resources and equipment to critical facilities until services are restored.• Provide technicians and operators for generators as available.
Mississippi Development Authority/Division of Energy	<ul style="list-style-type: none">• Will be called on during in extreme emergencies to help staff the EOC and provide points of contact when power outages and/or fuel supplies are the concern.

ESF #12 Review and Maintenance

As a minimum, the state agency contact will coordinate and conduct an annual review of this annex with all support agencies. Additional reviews may be conducted if experience with an incident or regulatory changes indicate a need. Recommendations for change will be submitted to MEMA for approval, publication, and distribution.

Mississippi Emergency Support Function #12 – Energy Annex

Appendices

Appendix 1: Map of Combined Certified Service Areas of South Mississippi

Appendix 2: Map of Entergy Mississippi Certificated Area

Appendix 3: Entergy Mississippi Service Area

Appendix 4: Entergy Mississippi Inc. Service Lines

Appendix 5: System Map of Entergy

Appendix 6: Electric Power Associations Map and Managers

Appendix 7: Mississippi Power Company Service Area 1

(Maps provided based on area and/or incident)

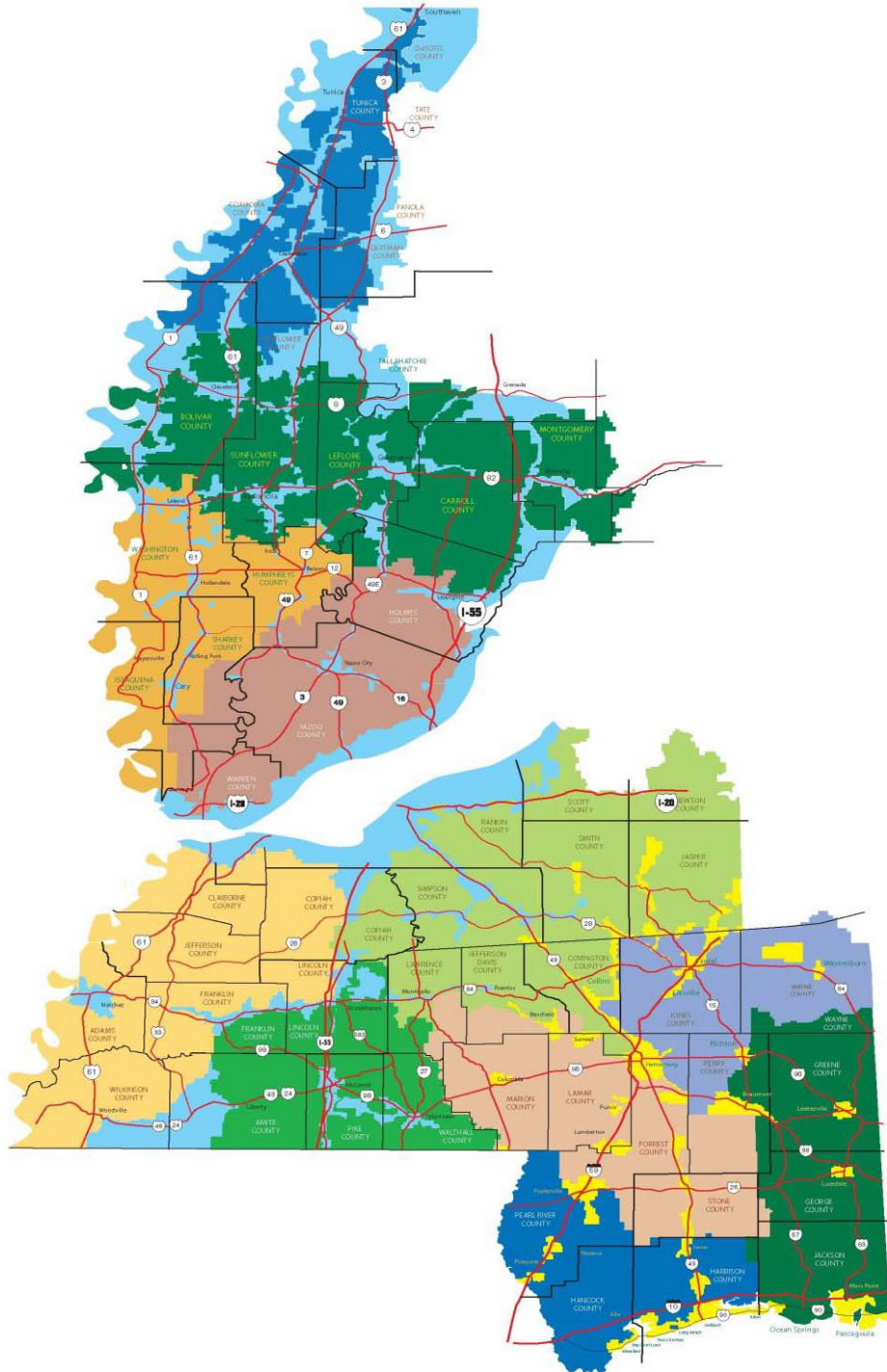
Authorities and References

1. List of Generator Suppliers (Refer to Master List maintained by MDA/ED).
2. Refer to list of “Resources” in WebEOC®.

Appendix 1

Map of Combined Certified Service Areas of South Mississippi

Mississippi Emergency Support Function #12 – Energy Annex



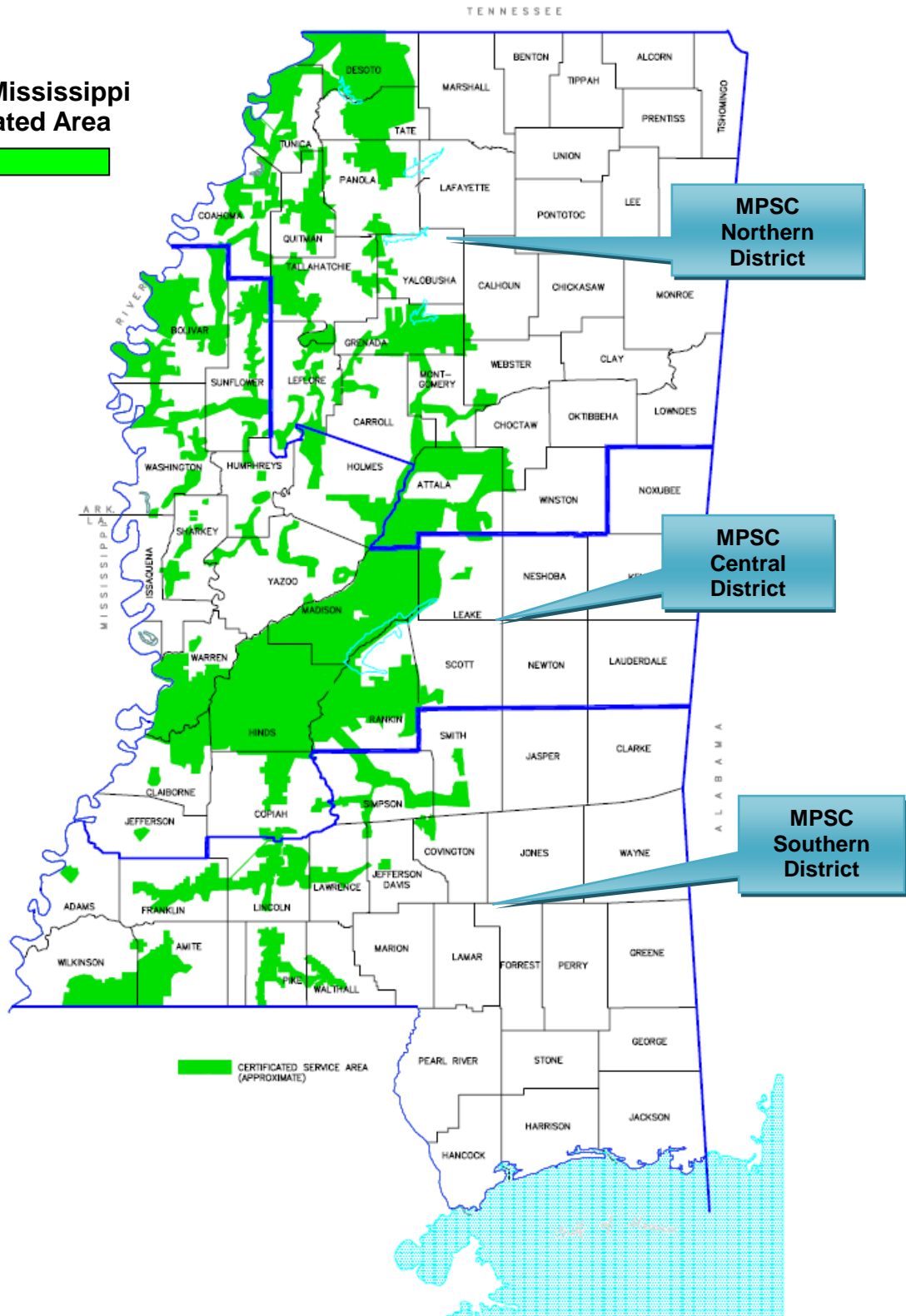
Yellow denotes certificated service area of Mississippi Power Company
Light blue denotes certificated service area of Entergy Mississippi
All other colors denote certificated service areas of SMEPA's members

Appendix 2

Map of Entergy Mississippi Certificated Area

Mississippi Emergency Support Function #12 – Energy Annex

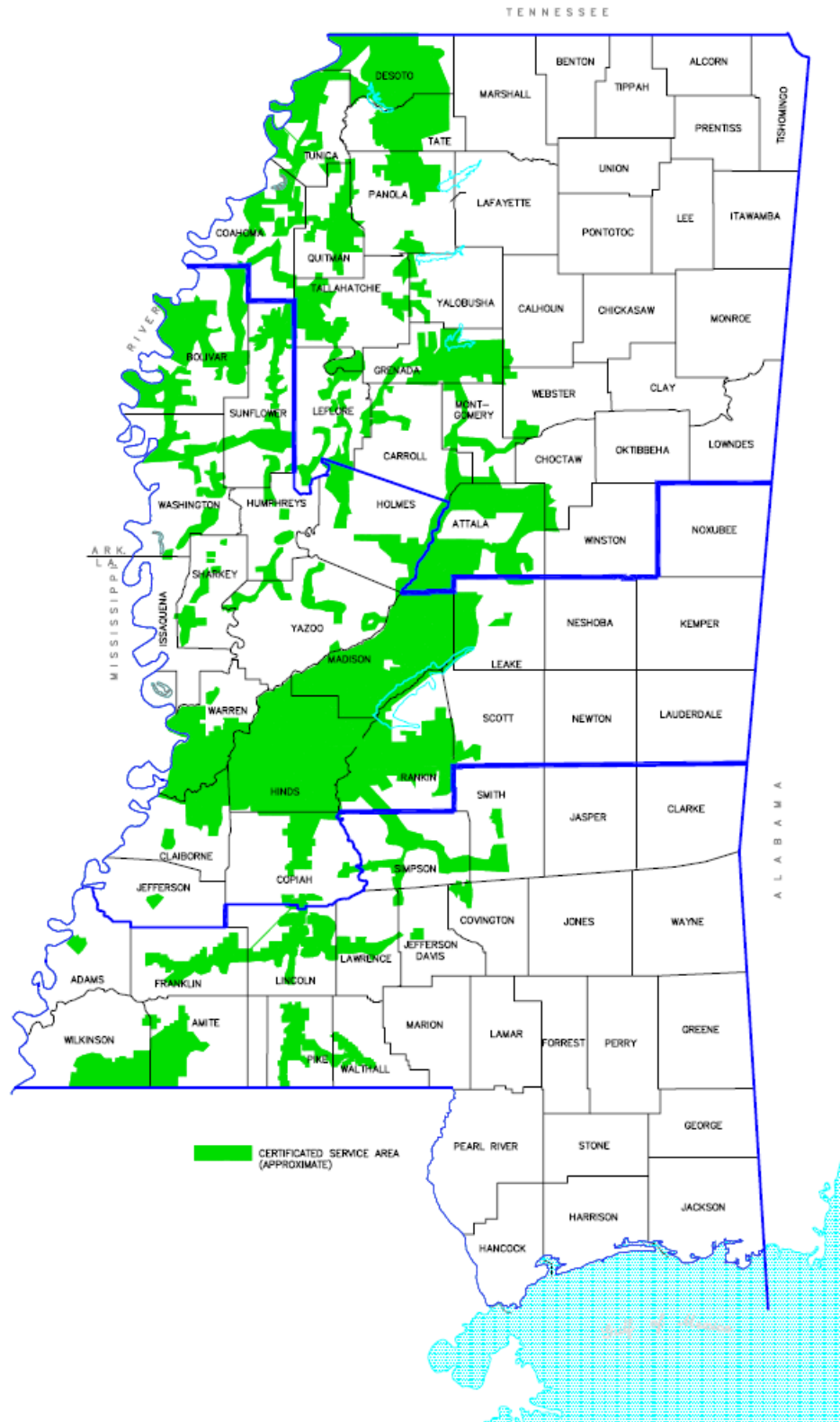
Entergy Mississippi
Certificated Area



Appendix 3

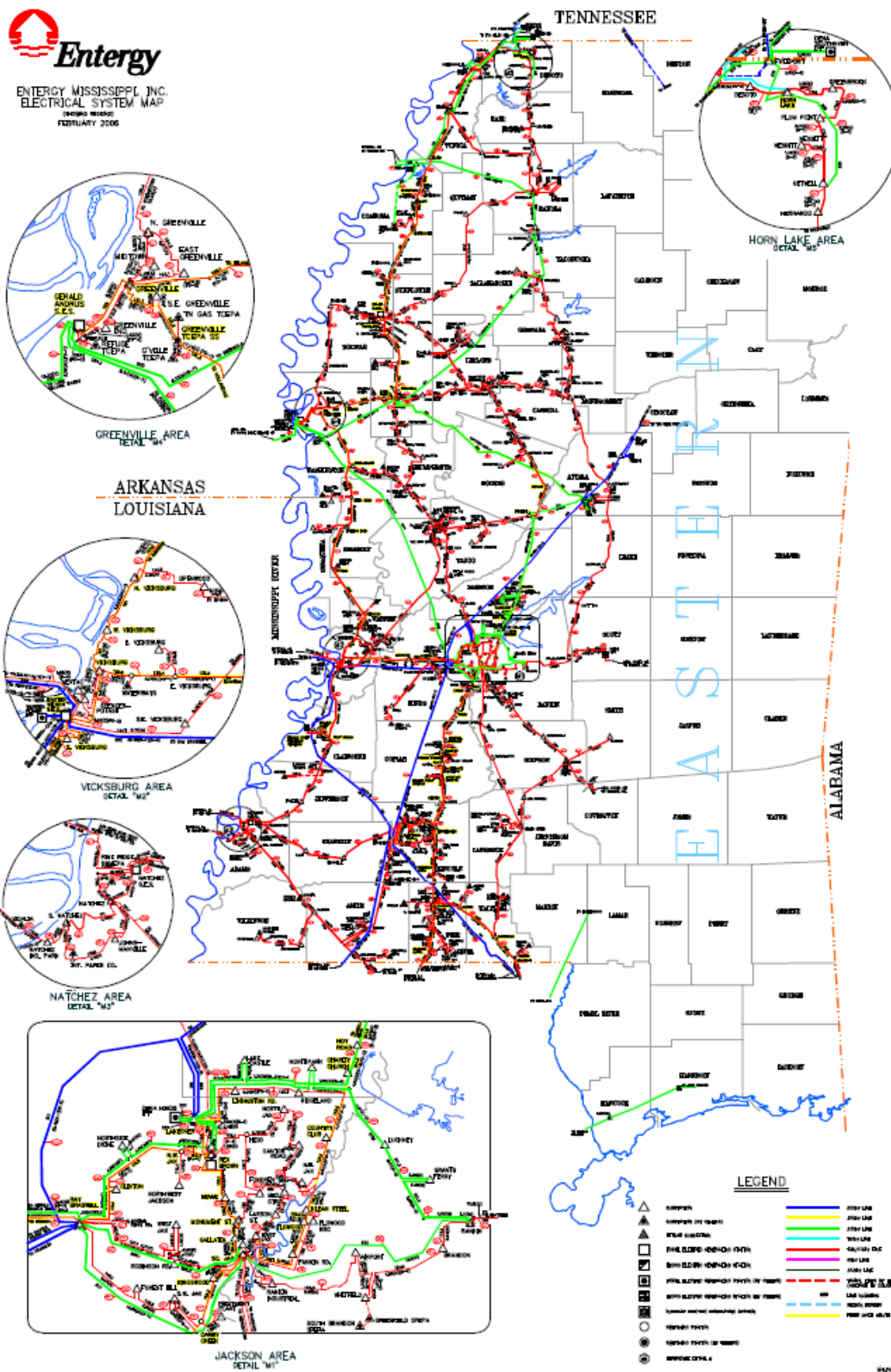
Entergy Mississippi Service Area

Mississippi Emergency Support Function #12 – Energy Annex



Appendix 4

Entergy Mississippi Inc. Service Lines



Appendix 5

System Map of Entergy

Mississippi Emergency Support Function #12 – Energy Annex



Appendix 6

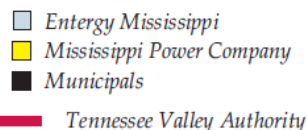
Electric Power Associations Map and Managers


Mississippi Emergency Support Function #12 – Energy Annex

E L E C T R I C P O W E R A S S O C I A T I O N S

ALCORN COUNTY EPA James D. Nanney, General Manager P.O. Box 1590 Corinth, MS 38835-1590 662-287-4402	PEARL RIVER VALLEY EPA Randy Wallace, General Manager P.O. Box 1217 Columbia, MS 39429-1217 601-736-2666
CENTRAL EPA Paul Long, General Manager P.O. Box 477 Carthage, MS 39051-0477 601-267-5671	PONTOTOC EPA Chuck Howell, General Manager P.O. Drawer 718 Pontotoc, MS 38863-0718 662-489-3211
COAHOMA EPA Keith Hurt, General Manager P.O. Box 188 Lyon, MS 38645-0188 662-624-8321	PRENTISS COUNTY EPA Ronny Rowland, General Manager P.O. Box 428 Booneville, MS 38829-0428 662-728-4433
COAST EPA Robert J. Occhi, President/CEO P.O. Box 2430 Bay St. Louis, MS 39521-2430 228-363-7351	SINGING RIVER EPA Lee Hedegaard, GM/CEO P.O. Box 767 Luedale, MS 39452-0767 601-947-4211
DELTA EPA Ronnie Robertson, General Manager P.O. Box 935 Greenwood, MS 38935-0935 662-453-6352	SOUTHERN PINE EPA Don Jordan, General Manager P.O. Box 60 Taylorsville, MS 39168-0060 601-785-6511
DIXIE EPA James T. Dudley, Jr., Interim GM P.O. Box 88 Laurel, MS 39441-0088 601-425-2535	SOUTHWEST MISSISSIPPI EPA Percy McCaa, General Manager P.O. Box 5 Lorman, MS 39096-0005 601-437-3611
EAST MISSISSIPPI EPA Wayne Henson, General Manager P.O. Box 5517 Meridian, MS 39302-5517 601-581-8600	TALLAHATCHIE VALLEY EPA Brad Robison, General Manager P.O. Box 513 Batesville, MS 38606-0513 662-563-4742
4-COUNTY EPA Joe B. Cade, GM/CEO P.O. Box 351 Columbus, MS 39703-0351 662-327-8900	TIPPAH EPA Tim Smith, General Manager P.O. Box 206 Ripley, MS 38663-0206 662-837-8139
MAGNOLIA EPA Darrell Smith, General Manager P.O. Box 747 McComb, MS 39649-0747 601-684-4011	TISHOMINGO COUNTY EPA Robert Grisham, Manager P.O. Box 560 Iuka, MS 38852-0560 662-423-3646
MONROE COUNTY EPA Barry Rowland, General Manager P.O. Box 300 Amory, MS 38821-0300 662-256-2962	TOMBIGBEE EPA William Long, General Manager P.O. Drawer 1789 Tupelo, MS 38802-1789 662-842-7635
NATCHEZ TRACE EPA Norma Kilgore, General Manager P.O. Box 609 Houston, MS 38851-0609 662-456-3037	TWIN COUNTY EPA John Mosley, Manager P.O. Box 158 Hollandale, MS 38748-0158 662-827-2262
NORTH EAST MISSISSIPPI EPA Robert Collier, General Manager P.O. Box 1076 Oxford, MS 38655-1076 662-234-6331	YAZOO VALLEY EPA C.H. Shelton, General Manager P.O. Box 8 Yazoo City, MS 39194-0008 662-746-4251
NORTHCENTRAL EPA Kevin Doddridge, General Manager P.O. Box 405 Byhalia, MS 38611-0405 662-895-2151	

METERS SERVED	
Association	No. Meters
Alcorn County EPA	18,963
Central EPA	34,976
Coahoma EPA	8,500
Coast EPA	77,529
Delta EPA	26,807
Dixie EPA	37,889
East Miss. EPA	36,565
4-County EPA	45,777
Magnolia EPA	30,011
Monroe County EPA	11,973
Natchez Trace EPA	15,847
North East Miss. EPA	20,988
Northcentral EPA	28,170
Pearl River Valley EPA	46,740
Pontotoc EPA	18,363
Prentiss County EPA	13,737
Singing River EPA	70,447
Southern Pine EPA	65,300
Southwest Miss. EPA	25,179
Tallahatchie Valley EPA	27,093
Tippah EPA	13,378
Tishomingo County EPA	13,477
Tombigbee EPA	41,315
Twin County EPA	12,559
Yazoo Valley EPA	10,378
TOTAL METERS	751,961



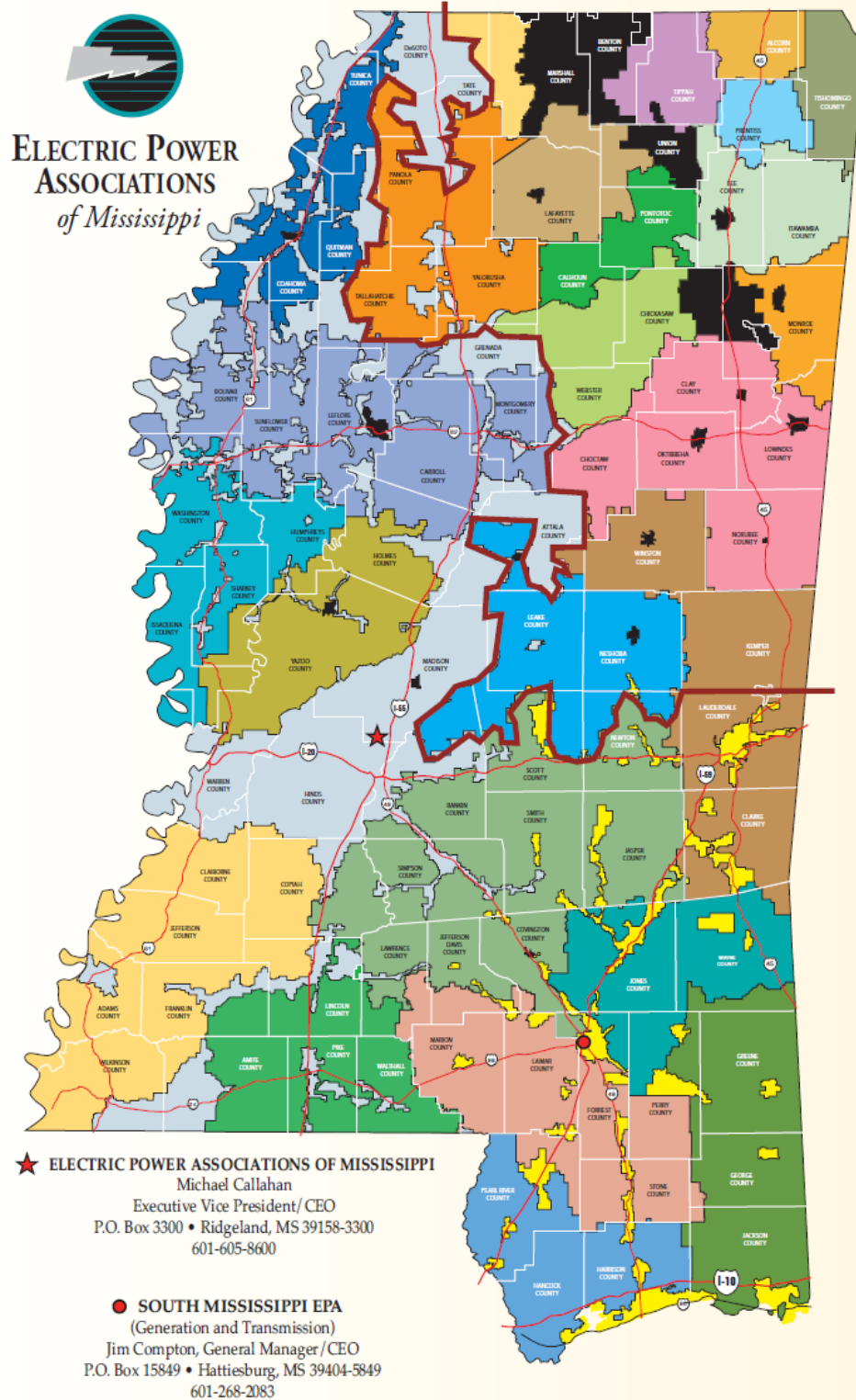
A Touchstone Energy* Partner 

www.epaofms.com

P.O. Box 3300 • Ridgeland, MS 39158-3300
665 Highland Colony Parkway

Office (601) 605-8600 • Fax (601) 605-8601

Mississippi Emergency Support Function #12 – Energy Annex



Appendix 7

Mississippi Power Company Service Area 1

Mississippi Emergency Support Function #12 – Energy Annex

