

# 2019 ANNUAL REPORT



MISSISSIPPI EMERGENCY  
MANAGEMENT AGENCY



# TABLE OF CONTENTS

3	FY 2019 OVERVIEW
4	DIRECTOR GREG MICHEL'S MESSAGE
5	STATE OF EMERGENCIES
7	FEDERAL DISASTERS IN MISSISSIPPI
9	OFFICE OF PREPAREDNESS
12	OFFICE OF RADIOLOGICAL EMERGENCY PREPAREDNESS
15	OFFICE OF SUPPORT SERVICES
16	DISASTER RESERVISTS
17	STATE OF MISSISSIPPI COUNTY FUNDING
20	OFFICE OF RESPONSE
26	OFFICE OF MITIGATION
27	OFFICE OF RECOVERY
28	OFFICE OF HOUSING AND INDIVIDUAL ASSISTANCE
29	INFORMATION TECHNOLOGY SERVICES
30	OFFICE OF EXTERNAL AFFAIRS
31	ANNUAL REPORT JULY 2018 THROUGH JUNE 2019
32	MEMA CONTINUES TO RESPOND

OUR GOAL IS TO BRING CALM  
AFTER THE STORM





# FY 2019 OVERVIEW

*The Mississippi Emergency Management Agency's mission is to safeguard Mississippi and her citizens by fostering a culture of preparedness, executing a timely response during disasters and quickly restoring quality of life, post-event.*

The Agency was created by an Executive Order in 1979 (formerly the Civil Defense Council) and has 150 employees, led by Executive Director Gregory Michel. MEMA is comprised of six core offices: Preparedness, Response, Radiological Emergency Preparedness, Mitigation, Recovery and Support Services.

THE STATE EMERGENCY OPERATIONS CENTER IS IN PEARL. MEMA'S STATE OF THE ART FACILITY WAS BUILT IN 2006 FOLLOWING HURRICANE KATRINA. THE SEOC ALSO HOUSES STATES AND FEDERAL AGENCIES, AS WELL AS OTHER RESPONDING ORGANIZATIONS TO A DISASTER. THE MEMA HEADQUARTERS (SEOC) IS HOME TO THE MISSISSIPPI STATE DEPARTMENT OF HEALTH SATELLITE OFFICE AND THE MISSISSIPPI DEPARTMENT OF PUBLIC SAFETY'S FUSION CENTER.

The state is divided into nine MEMA districts, with each having a resident Area Coordinator to serve the county emergency management director with planning, training, exercise, response and recovery for all types of emergencies and disasters.

In FY 19, Mississippi saw three presidentially declared disasters. Severe storms, flooding and a tornado tore through the southern portion of the state on December 27-28, 2018. Next, historic flooding ravaged the Delta beginning on February 22, 2019. Then on April 13-14, 2019, more severe storms, straight-line winds, tornadoes and flooding hit the Delta once more, bringing with it millions of dollars worth of damage.

This annual report highlights the work of MEMA's staff that works tirelessly for the people of Mississippi 24-hours a day, 365 days a year.





# DIRECTOR GREG MICHEL'S MESSAGE



In 2019, Mississippi's resiliency was tested. We experienced six state of emergencies, three federally declared disasters, FEMA's longest disaster period on record relative to the Backwater Flood, and a record number of tornado outbreaks across the state. MEMA has sustained a perpetual state of response since December 2018, but the team continues to be strong and responsive as we enter 2020. Our efforts would be futile were it not for the professional corp of local emergency management agencies that comprise the 82 counties and Band of Choctaw Indians. Every emergency response starts and ends with the local agency and we have some of the best in the world. Volunteer organizations across the state as well as around the United States were a force multiplier for our response and recovery efforts to Mississippi's disasters in 2019. It was a Total Red Team effort!

Mississippi is no stranger to disasters and the resiliency of our citizens is remarkable. We must continue to maintain a high state of preparedness for the expected as well as the unexpected like earthquakes and pandemic threats. Finally, we must also continue to be available to respond to assist our fellow states during their time of need.

Regardless of the threat, MEMA will continue to plan and prepare for emergency scenarios in an effort to respond to and support local EMAs during emergency events. In the wake of a disaster, we will likewise be there to coordinate for resources and administrate recovery efforts for our local partners. MEMA stands ready with our local emergency management agencies to respond to the needs of the citizens of Mississippi! Can you sleep on a dark and stormy night?

**EVERY EMERGENCY RESPONSE STARTS AND ENDS  
WITH THE LOCAL AGENCY AND WE HAVE SOME OF  
THE BEST IN THE WORLD.**





# STATE OF EMERGENCIES

JULY 1, 2018 – JUNE 30, 2019

IN FY 19 GOVERNOR PHIL BRYANT DECLARED SIX  
STATE OF EMERGENCIES

## SEPTEMBER 3, 2018 – TROPICAL STORM GORDON

- The seventh named storm of the Atlantic Hurricane season

On September 5, 2018, Gordon made landfall as a strong tropical storm with winds of 70 mph just west of the Mississippi-Alabama state line in Jackson County.

The combination of tropical storm force wind gusts and saturated soil resulted in several trees falling across Greene and George Counties. One fatality was reported in Escambia County, FL.

## DECEMBER 27, 2018 – SEVERE WEATHER AND FLOODING

- Federal Disaster Declaration #4415

On December 27-28, 2018, 10+ inches of rain fell within a short period of time, damaging homes, businesses and public property. The damage was so significant it led to a federal disaster declaration by President Donald Trump.

## FEBRUARY 22, 2019 – SEVERE WEATHER

- Federal Disaster Declaration #4429

On February 22, 2019, marked the beginning of the Backwater Flooding in the Delta. This is deemed as one of the worst floods in Mississippi's history. More than 500,000 acres of land were destroyed. On May 23, 2019 the Yazoo Basin Backwater crested at 98.2 feet. This resulted in the second federal disaster declaration for FY 19 for the state of Mississippi.

CONTINUED ON PAGE 6





(CONTINUED FROM PAGE 5)

#### **APRIL 13-14, 2019 – SEVERE WEATHER**

- Federal Disaster Declaration #4450

A severe weather system producing damaging straight-line winds crossed into the state knocking down trees and powerlines in many areas. Into the morning hours as the storm moved eastward multiple tornadoes developed across the state. One storm fatality was reported to MEMA. The damage was so significant that President Trump declared a third federal disaster for Mississippi, for FY 19.

#### **APRIL 18, 2019 – SEVERE WEATHER**

- The state was affected by at least 16 tornadoes that hit across the state. Three people died as a result of the severe weather.

#### **MAY 8, 2019 – SEVERE WEATHER & FLOODING**

Severe storms and flooding impacted the southwestern portion of the state. Multiple counties throughout the state experienced major flooding issues that led to river flooding, backwater flooding and multiple road closures of state highways, roads and county roads.



# SEVERE WEATHER



# FEDERAL DISASTERS IN MISSISSIPPI

There were three federally declared disasters by President Trump in FY 2019, which marked the 11th time in the state's history there were three or more in a single year.

**DR-4415**

**MISSISSIPPI SEVERE STORMS, FLOODING, AND TORNADO**

**INCIDENT PERIOD:** December 27-28, 2018

**MAJOR DISASTER DECLARATION:** February 14, 2019

**COUNTIES DECLARED FOR PUBLIC ASSISTANCE:** Clarke, Covington, Forrest, Greene, Jasper, Jones, Newton, Noxubee, Marion, Perry, and Wayne

**TOTAL PUBLIC ASSISTANCE GRANTS DOLLARS OBLIGATED:** \$4,468,011.60

**DR-4429**

**MISSISSIPPI SEVERE STORMS, STRAIGHT-LINE WINDS, TORNADOES, AND FLOODING**

**INCIDENT PERIOD:** February 22-August 23, 2019

**MAJOR DISASTER DECLARATION:** April 23, 2019

**COUNTIES DECLARED FOR INDIVIDUAL ASSISTANCE:** Clay, Humphreys, Issaquena, Lowndes, Monroe, Sharkey, Warren, and Yazoo

**COUNTIES DECLARED FOR PUBLIC ASSISTANCE:** Alcorn, Calhoun, Carroll, Chickasaw, Clay, Coahoma, Humphreys, Issaquena, Itawamba, Lafayette, Lee, Leflore, Lowndes, Montgomery, Panola, Pontotoc, Prentiss, Quitman, Sharkey, Sunflower, Tallahatchie, Tishomingo, Union, Warren, Washington, Webster, Yalobusha, and Yazoo

**CONTINUED ON PAGE 8**



**(CONTINUED FROM PAGE 7)**

*DR-4429 includes one of the most devastating floods in the state's history. The Mississippi River set record levels above Flood Stage at two of the three measuring points in state.*

*Greenville - 154 consecutive days above Flood Stage*

*Natchez - 215 consecutive days above Flood Stage*

*Vicksburg - 162 consecutive days above Flood Stage, 2nd longest to 185 days in 1927*

*From April 2018 through March 2019, the Ohio Valley, the Midwest, and the Northeast Regions of the United States set a 124-year record for rainfall in a 12-month period. Not only did this lead to the record flooding on the Mississippi River, but also in Yazoo Basin Backwater.*

*Pictured to the right is how the Backwater drains into the Mississippi.*

*The Backwater reached a record crest of 98.2' on May 23rd and did not go back below flood stage until July.*

*This flood had devastating consequences on farmland and wildlife. In total, over 548,000 acres of land were flooded, 231,000 of which were Crop Land. Nothing was planted in those areas in 2019 and many farmers are not expecting to be able to yield a crop in 2020.*

**TOTAL INDIVIDUAL & HOUSEHOLDS PROGRAM DOLLARS APPROVED:** \$1,635,826.80

**TOTAL PUBLIC ASSISTANCE GRANTS DOLLARS OBLIGATED:** \$11,991,206.12

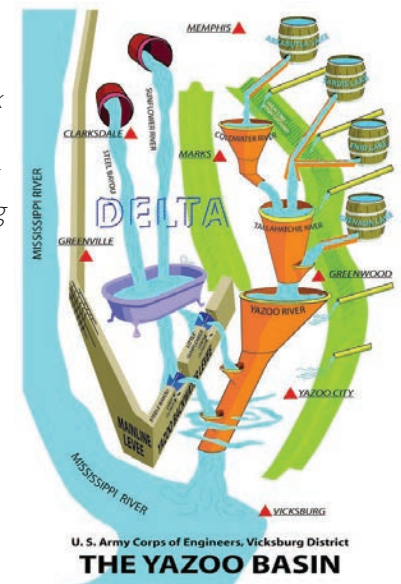
**DR-4450****SEVERE STORMS, STRAIGHT-LINE WINDS, TORNADOES, AND FLOODING**

**INCIDENT PERIOD:** April 13-14, 2019

**MAJOR DISASTER DECLARATION:** June 20, 2019

**COUNTIES DECLARED FOR PUBLIC ASSISTANCE:** Clarke, Clay, Holmes, Itawamba, Kemper, Monroe, Oktibbeha, Warren, and Yazoo

**TOTAL PUBLIC ASSISTANCE GRANTS DOLLARS OBLIGATED:** \$4,313,305.32





# OFFICE OF PREPAREDNESS

“Our tenacious planning, training, and exercises now, will set the conditions for a strong Mississippi after any disaster. Posturing for preparedness while remaining situationally flexible is key to disaster resiliency and response.” Loretta S. Thorpe, Office of Preparedness Director



**THE NATIONAL EMERGENCY MANAGEMENT ADVANCED ACADEMY**

## PLANNING

The Planning Bureau is responsible for maintaining state-level emergency operations plans, preparedness programs, and assisting local jurisdictions in whole community all-hazards planning initiatives to ensure the preparedness and resilience of the state before and following a disaster.

- Assisted eighty-two counties and the Mississippi Band of Choctaw Indians with the review or revision of their Comprehensive Emergency Management Plans (CEMP) and the development of emergency management Continuity of Operations Plans (COOP). These plans are vital to ensure and maintain the state's whole community all-hazards emergency management capability.
- Provided technical assistance to three institutions of higher learning on the development and maintenance of their emergency operations plans.
- Began coordinating the revision of the State CEMP with seventy-eight stakeholders to include state and federal partners alongside non-governmental organizations. To be completed and published in FY2020.
- Began the development of the Critical Transportation Needs (CTN) Evacuation Plan with state and federal partners.
- Completed the revision of the State of Mississippi Hurricane Plan through coordination with whole community emergency management stakeholders.
- Coordinated statewide participation in the 2018 ShakeOut Drill through the distribution of invitation letters, flyers, and Earthquake Preparedness Guides to school districts, local emergency management offices, community colleges, universities and public libraries. 346,572 participants statewide (Includes 59.1% student participation in the Critical Seismic Areas.)
- Coordinated with Desoto County to complete seismic safety inspections of seventeen public facilities in Desoto County and assisted in the compilation of a comprehensive report outlining observations, recommendations, and FEMA P-154 reports for each facility.
- Attended and participated in the 2019 National Earthquake Program Managers Meeting in Salt Lake City, Utah, where states shared lessons learned and initiatives they were instituting or developing to enhance their earthquake awareness and resilience.
- Assisted the Mississippi Office of Homeland Security with the completion of the 2018 Threat and Hazard Risk Assessment (THIRA) and State Preparedness Report (SPR).

**CONTINUED ON PAGE 10**



(CONTINUED FROM PAGE 9)

## EXERCISE

The Exercise Bureau consists of three Exercise Officers and a Bureau Director. The Exercise Bureau works with Federal, State and Local partner agencies and stakeholders to design, coordinate, and facilitate exercises that validate emergency planning efforts and assist in identifying training needs to promote and support a culture of preparedness for the whole community. Exercise Officers work to align exercise objectives with the mission areas and core capabilities identified in the National Preparedness Goal (NPG), training provided in support of the National Incident Management System (NIMS), and to identify improvement planning opportunities with Homeland Security Exercise Evaluation Program (HSEEP) guidance. The Exercise Bureau is additionally responsible for tracking and documenting exercise conduct and improvement planning information for recipients of Emergency Management Performance Grant (EMPG) funding.

The Exercise Bureau coordinated with Federal, State, and Local partners to develop and implement the Office of Preparedness Biennial Work Plan, which serves as the Multi-Year Training and Exercise Plan (MYTEP) for the Mississippi Emergency Management Agency (MEMA). MEMA began implementation of annual Regional Exercises outlined in the Office of Preparedness Biennial Work Plan with participation in Shaken Fury 2019, which was a Federal Emergency Management Agency (FEMA) coordinated National Exercise with a scenario based on a 7.7 magnitude earthquake occurring along the New Madrid Seismic Zone. The Exercise Bureau coordinated Shaken Fury 2019 planning efforts with Federal partners, numerous neighboring states in the New Madrid Seismic Zone, and the Mississippi National Guard in preparation for the five-day exercise, which was conducted in the first week of June 2019. In the 12 months leading up to Shaken Fury 2019, the Exercise bureau worked with counties in the Northern Region of the state and multiple State government agencies to coordinate exercise planning and participation focused on validating planning and training efforts and to identify gaps and improvement opportunities. There were a total of 19 counties from the Northern Region of the Mississippi, 485 exercise participants from various Federal, State, and Local partner agencies. The gaps and improvement opportunities identified during the exercise will be used to revise existing plans, update procedures, and to provide training opportunities to foster a culture of preparedness within the State of Mississippi.

## TRAINING

The Training Bureau consists of five training officers and a Director/State Training Officer. The training officers are responsible for instructing/coordinating training in the State of Mississippi. Courses are delivered to local emergency managers, first responders, state agencies, volunteer organizations, tribal communities, universities and businesses. The trainings provided are structured to meet the needs of this diverse audience with an emphasis on separate organizations working together in all-hazards emergencies to save lives and protect property. Particular emphasis is placed on governing doctrine such as the National Response Framework, National Incident Management System, and the National Preparedness Goal.

MEMA's training program offers courses in the following categories:

- Emergency Planning
- Basic Emergency Management
- Mitigation
- Preparedness
- Incident Command

CONTINUED ON PAGE 11

**(CONTINUED FROM PAGE 10)**

- Response and Recovery
- Communication
- Cyber Security

The National Emergency Management Advanced Academy was hosted regionally at the Mississippi Emergency Management Agency this past year. The Advanced Academy consisted of the following course offerings:

- EO451 Advanced I – A Survey of Advanced Concepts in Emergency Management (5 days)
- EO452 Advanced II – Assessment and Application of Professional Style in Emergency Management (5 Days)
- EO453 Advanced III – Advanced Concepts and Issues in the Emergency Management Organization (5 days)
- EO454 Advanced IV – Advanced Concepts and Issues in the Emergency Management Community and Profession (5 days)

**TOTAL COURSE HOURS: 160 HOURS**

Over the past year, 24 students from Mississippi received certificates for completing The Federal Emergency Management Agency's Advanced Professional Series. This series of courses consists of the following required courses as well as five elective courses:

- G775 EOC Management and Operations **OR** IS775 EOC Management and Operations
- G191 Incident Command System/ Emergency Operations Center Interface **OR** E/L449 ICS Train the Trainer
- G557 Rapid Assessment Workshop
- G205 Recovery from Disaster, the Local Government Role **OR** E210 Recovery from Disaster, the Local Government Role
- G393 Mitigation for Emergency Managers **OR** G318 Local Mitigation Planning

DATE	TOTAL PERSONNEL TRAINED	TOTAL NUMBER OF CLASSES
July 1 thru September 2018	875	52
October 1 thru December 2018	592	26
January 1 thru March 2019	654	44
April 1 thru June 2019	906	36





# OFFICE OF RADIOLOGICAL EMERGENCY PREPAREDNESS

*"Too often we bask in our comfortable complacency and rationalize that a tornado will not affect my home, or the floodwaters will never reach my doorstep, or that a Nuclear Power Plant can withstand mother nature. Those who believe this are either not acquainted with the revelations that have been put before us in Mississippi or around the world. The Office of Response and Radiological Preparedness strives to not be complacent. We are forward thinkers, improving processes and techniques, capturing lessons learned so we can avoid repeating them, and testing ourselves to failure, so we do not fail our citizens in their time of need."*

**- ROBERT GOLDSMITH,** Response and Radiological Emergency Preparedness Director

*The Mission of the Office of Radiological Emergency Preparedness is to provide first responders and volunteers with radiological training and support to protect the health and safety of the public and the environment. This office is uniquely qualified to be an integral partner for the State of Mississippi's Fixed Site Nuclear Program, Waste Isolation Pilot Program (WIPP) and Preventive Radiological Nuclear Detection Programs (PRND). The Office of Radiological Emergency Preparedness (REP) accomplishes this by providing leadership, coordinating, and conducting meetings, training, drills and evaluated exercises.*

(CONTINUED FROM PAGE 12)

## TRAINING

This past fiscal year, the Fixed Nuclear Facility Program conducted 20 classes that reached out to 538 students. REP offered and executed a wide variety of training and exercises with the goal of building and maintaining preparedness, prevention, protection, responsiveness, recovery, and mitigation of actual or potential radiological or nuclear threats and hazards. Some of the training offered:

- Fundamentals Course for Radiological Response (and Refresher Training)
- Pre-Hospital and Patient Transportation Training
- Bus Driver Dosimetry
- Emergency Worker Decontamination
- Reception and Congregate Care

## GRAND GULF NUCLEAR STATION FULL-SCALE PLUME EVALUATION EXERCISE 2019

The Federal Emergency Management Agency (FEMA) assesses and validates capabilities and formal plans to maintain reasonable assurance for jurisdictions surrounding the site. Ongoing compliance with approved Nuclear Regulatory Commission (NRC) and FEMA planning standards is required.

From December 2018 through March 2019, the responding agencies that surround Grand Gulf Nuclear Station in Mississippi and Louisiana participated in a series of FEMA evaluated training lanes. This series culminated in a weather-driven scenario at the site, which required several increases to emergency classification levels that initiated evacuations and activated Emergency Operation Center across the region. It also led to field team plume measurements, protective action decisions, and hospital patient care. The series successfully tested the response agencies and private organizations, as well as developed lessons learned for real-world practical use.

## MISSISSIPPI RADIOLOGICAL EMERGENCY PREPAREDNESS PLAN (MREPP)

During the 2019 Grand Gulf Nuclear Station exercise, MREPP passed its evaluation, and MEMA continues to provide updates for the plan on an annual basis. MREPP 2020 will update the Protective Action Guidelines and Decision Points based on the newly restructured Environmental Protection Agency (EPA) guidelines. In the case of a site or a regional event, these guidelines will keep citizens and emergency workers out of harm's way. The updated plan will also include new re-entry procedures to restricted areas. It will also ensure our citizens can return to their homes and businesses only when deemed safe for them to reoccupy permanently. It will also allow them, if necessary, to obtain essential documents to relocate.

## JOINT INFORMATION CENTER (JIC)

Located at MEMA in Pearl, the JIC continues its joint efforts with State and Entergy efforts at the Grand Gulf Nuclear Station. The JIC will be upgraded physically and technologically to better provide cross-coordination with the media, Entergy, Mississippi, and Louisiana state and local agencies, to provide the most up-to-date emergency information to the public.

## RADIOLOGICAL EMERGENCY PREPAREDNESS HANDBOOK REVISION

To prepare for the inclusion of the updated EPA guidelines as they relate to radiological protective measures, the MEMA REP office will be producing the updated 4th edition of REP Handbook in the coming fiscal year for distribution to all responding agencies and organizations.

CONTINUED ON PAGE 14



(CONTINUED FROM PAGE 13)

### PREVENTIVE RADIOLOGICAL/ NUCLEAR DETECTION PROGRAM (PRND)

This program conducted training by holding a PRND Team Operations Course, which was instructed by the Nevada National Security Site Counter-Terrorism Operations Support team. MEMA invited several state and local agencies to our Pearl facility to provide training to their primary and secondary Radiological screeners. This training maximized their PRND equipment capabilities by efficiently and effectively performing essential tasks to protect and secure critical infrastructure, large venues, and special events. The exercises conducted during the week-long training were based on specific competencies, behaviors, and tasks. The training sites were MEMA, the Mississippi State Capitol, and Jackson Convention Complex.

### WASTE ISOLATION PILOT PLANT PROGRAM (WIPP)

WIPP is a US Department of Energy (DOE) owned and operated program, which issues funds in 5-year grants to State Regional Groups. Mississippi is part of the Southern States Energy Board (SSEB) State Regional Group. The program includes Stakeholders from the MS Dept of Health, MS Dept of Transportation, MS Dept of Public Safety, and the MS Dept of Environmental Quality. The program works closely with County EMA offices, Fire Departments, and Law Enforcement to train and increase awareness for Radiological Transportation incidents.

MEMA continues to remain in the forefront of Radiological Transportation response preparation by providing 12 training sessions to 301 participants during the fiscal year. The WIPP program assembled riveting discussions from the Grand Gulf Nuclear Station, the Mississippi State Department of Health, the Office of Secure Transport, the Department of Energy, the Southern States Energy Board and other organizations at MEMA in Pearl, Mississippi, for the first ever, Mississippi Radiological Transportation Symposium and was recognized for its efforts by the National Transportation Safety Forum. Along with continually scheduling valuable training into the new fiscal year, the WIPP program is assembling several organizations to provide a full-scale, Radiological Transportation Exercise in March 2020 in Meridian, Mississippi to provide a very realistic approach to responding to a large, multi-hazard transportation incident.

MEMA continues to remain at the forefront of Radiological Transportation Response Preparation by providing 12 training sessions to 301 participants during the fiscal year. The WIPP program also held the first-ever Mississippi Radiological Transportation Symposium, and for its efforts, was recognized by the National Transportation Safety Forum. In attendance were representatives from Grand Gulf Nuclear Station, the Mississippi State Department of Health, the Office of Secure Transport, the Department of Energy, and the Southern States Energy Board. Along with continually scheduling valuable training into the new fiscal year, the WIPP program is assembling several organizations to provide a full-scale, Radiological Transportation Exercise in March 2020 in Meridian. This exercise will give a very realistic approach to responding to a significant, multi-hazard transportation incident.



# OFFICE OF SUPPORT SERVICES

**TRAVEL:** Processed 1493 travel authorizations

**CONTRACTS:** Have a total of 19 board-approved contracts totaling \$31,780,118

**ACCOUNTS PAYABLE:** Processed over 900 purchase requisitions for a monetary total of \$7,350,997

## LOGISTICS

Resources Deployed:

- SANDBAGS - 290,500
- TARPS - 3,026
- WATER BOTTLES - 34,800
- Responded to WEBEOC commodity requests from 38 counties

## PROPERTY

2,058 total number of assets with a dollar value of \$23,302,621.59

## FLEET

57 vehicles for a total of 725,594 miles

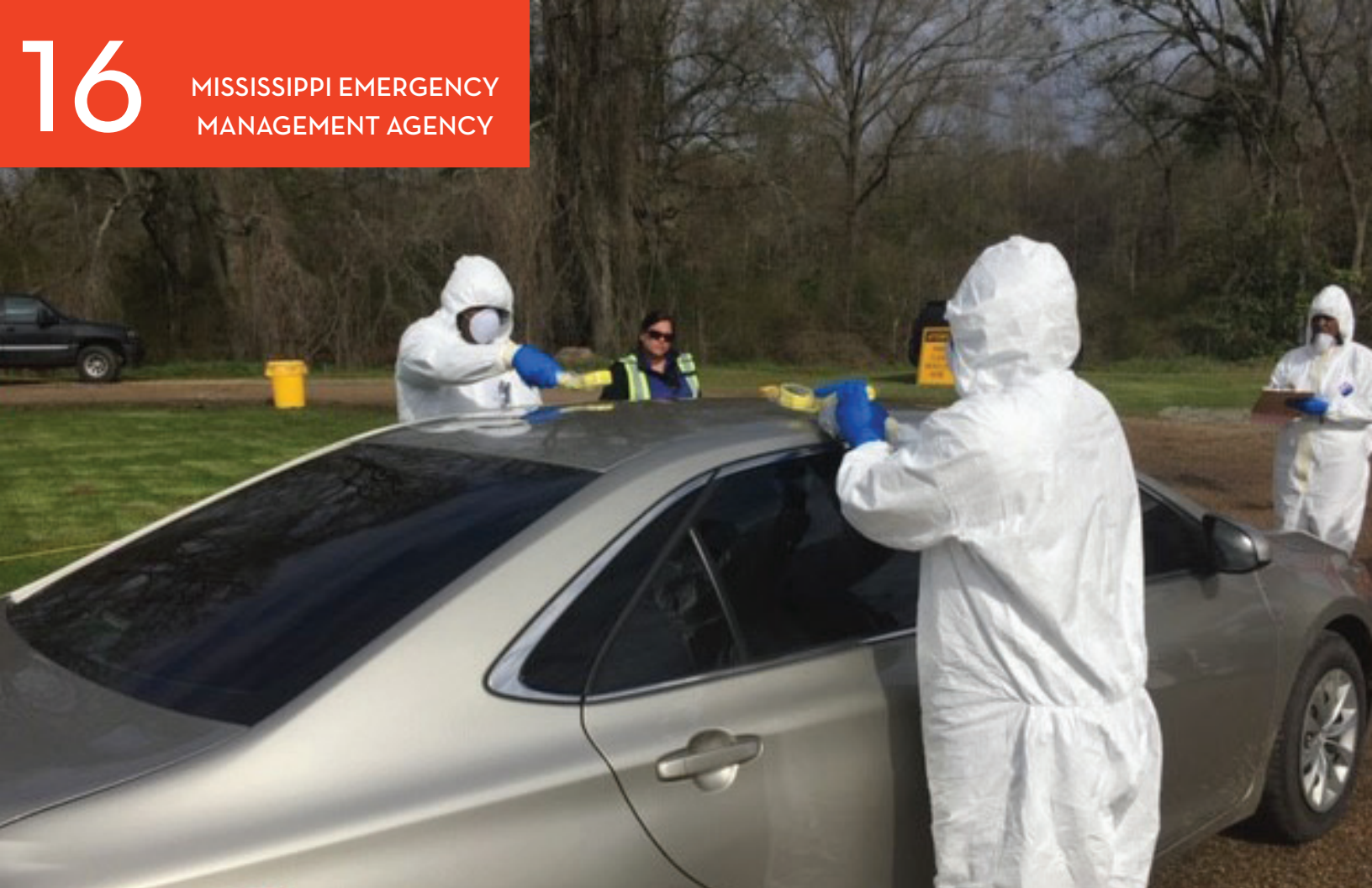
## FACILITIES

- Managed over 83,280 square feet of MEMA facilities
- Replaced lighting on the MEMA sign at main entrance
- Replaced UPS battery backups for the Agency to ensure we do not lose power in Communications
- Replaced warehouse HVAC unit

## GRANTS

\$84,075,933 in grant payments to all 82 counties and the Band of Choctaw Indians





# DISASTER RESERVISTS

MEMA's Disaster Reservist program was created to provide a corps of trained and experienced Mississippians who can be activated on an as-needed basis to meet staffing needs during emergencies. The program keeps a database of individuals with skills and experience that may be used during disasters. During the 2019 fiscal year, there were a total of 303 disaster reservists and 117 of those reservists were used during disasters throughout the year.

Disaster Reservists may include individuals with logistics, public information, public works and engineering backgrounds, but individuals with other experiences may also be used. Individuals may also be retired from government or private industry careers and be available to enter into a contract once a disaster or emergency occurs. Reservists will be required to attend training at least two times each year on state and federal emergency plans. Once a reservist is on active-duty status, he or she will become a contract employee of MEMA for the duration of their deployment or mission assignment. Reservist pay is based on training, skills and experience.

Individuals who are interested in applying for the program can visit this website for more information:

**[HTTPS://WWW.MSEMA.ORG/RESOURCES/TRAINING/DISASTER-RESERVISTS/](https://www.msema.org/resources/training/disaster-reservists/)**

## FY 2019 EMERGENCY MANAGEMENT PERFORMANCE GRANT STATE OF MISSISSIPPI COUNTY FUNDING

COUNTY	BASE ALLOCATION	POPULATION	POPULATION ALLOCATION	TOTAL 2019 ALLOCATION
ADAMS	\$10,000.00	31,192	\$19,027.12	\$29,027.12
ALCORN	\$10,000.00	36,925	\$22,524.25	\$32,524.25
AMITE	\$10,000.00	12,326	\$7,518.86	\$17,518.86
BENTON	\$10,000.00	8,271	\$5,045.31	\$15,045.31
BOLIVAR	\$10,000.00	31,333	\$19,113.13	\$29,113.13
CALHOUN	\$10,000.00	14,436	\$8,805.96	\$18,805.96
CARROLL	\$10,000.00	9,911	\$6,045.71	\$16,045.71
CHICKASAW	\$10,000.00	17,171	\$10,474.31	\$20,474.31
CHOCTAW	\$10,000.00	8,278	\$5,049.58	\$15,049.58
CLAIBORNE	\$10,000.00	9,002	\$5,491.22	\$15,491.22
CLARKE	\$10,000.00	15,604	\$9,518.44	\$19,518.44
CLAY	\$10,000.00	19,386	\$11,825.46	\$21,825.46
COAHOMA	\$10,000.00	22,628	\$13,803.08	\$23,803.08
COPIAH	\$10,000.00	28,543	\$17,411.23	\$27,411.23
COVINGTON	\$10,000.00	18,853	\$11,500.33	\$21,500.33
DESOTO	\$10,000.00	182,001	\$111,020.61	\$121,020.61
FORREST	\$10,000.00	75,036	\$45,771.96	\$55,771.96
FRANKLIN	\$10,000.00	7,788	\$4,750.68	\$14,750.68
GEORGE	\$10,000.00	24,250	\$14,792.50	\$24,792.50
GREENE	\$10,000.00	13,586	\$8,287.46	\$18,287.46
GRENADA	\$10,000.00	21,055	\$12,843.55	\$22,843.55
HANCOCK	\$10,000.00	47,334	\$28,873.74	\$38,873.74
HARRISON	\$10,000.00	206,650	\$126,056.50	\$136,056.50
HINDS	\$10,000.00	237,085	\$144,621.85	\$154,621.85
HOLMES	\$10,000.00	17,622	\$10,749.42	\$20,749.42
HUMPHREYS	\$10,000.00	8,257	\$5,036.77	\$15,036.77
ISSAQUENA	\$10,000.00	1,308	\$797.88	\$10,797.88
ITAWAMBA	\$10,000.00	23,517	\$14,345.37	\$24,345.37
JACKSON	\$10,000.00	143,277	\$87,398.97	\$97,398.97
JASPER	\$10,000.00	16,428	\$10,021.08	\$20,021.08
JEFFERSON	\$10,000.00	7,106	\$4,334.66	\$14,334.66
JEFFERSON DAVIS	\$10,000.00	11,234	\$6,852.74	\$16,852.74
JONES	\$10,000.00	68,461	\$41,761.21	\$51,761.21
KEMPER	\$10,000.00	10,027	\$6,116.47	\$16,116.47
LAFAYETTE	\$10,000.00	54,793	\$33,423.73	\$43,423.73



## FY 2019 EMERGENCY MANAGEMENT PERFORMANCE GRANT STATE OF MISSISSIPPI COUNTY FUNDING

COUNTY	BASE ALLOCATION	POPULATION	POPULATION ALLOCATION	TOTAL 2019 ALLOCATION
LAMAR	\$10,000.00	62,447	\$38,092.67	\$48,092.67
LAUDERDALE	\$10,000.00	75,317	\$45,943.37	\$55,943.37
LAWRENCE	\$10,000.00	12,455	\$7,597.55	\$17,597.55
LEAKE	\$10,000.00	22,763	\$13,885.43	\$23,885.43
LEE	\$10,000.00	85,202	\$51,973.22	\$61,973.22
LEFLORE	\$10,000.00	28,919	\$17,640.59	\$27,640.59
LINCOLN	\$10,000.00	34,205	\$20,865.05	\$30,865.05
LOWNDES	\$10,000.00	58,930	\$35,947.30	\$45,947.30
MADISON	\$10,000.00	105,630	\$64,434.30	\$74,434.30
MARION	\$10,000.00	24,715	\$15,076.15	\$25,076.15
MARSHALL	\$10,000.00	35,451	\$21,625.11	\$31,625.11
MBCI	\$10,000.00	10,590	\$6,459.90	\$16,459.90
MONROE	\$10,000.00	35,564	\$21,694.04	\$31,694.04
MONTGOMERY	\$10,000.00	10,023	\$6,114.03	\$16,114.03
NESHOBA	\$10,000.00	29,125	\$17,766.25	\$27,766.25
NEWTON	\$10,000.00	21,443	\$13,080.23	\$23,080.23
NOXUBEE	\$10,000.00	10,535	\$6,426.35	\$16,426.35
OKTIBBEHA	\$10,000.00	49,599	\$30,255.39	\$40,255.39
PANOLA	\$10,000.00	34,178	\$20,848.58	\$30,848.58
PEARL RIVER	\$10,000.00	55,387	\$33,786.07	\$43,786.07
PERRY	\$10,000.00	11,931	\$7,277.91	\$17,277.91
PIKE	\$10,000.00	39,563	\$24,133.43	\$34,133.43
PONTOTOC	\$10,000.00	31,833	\$19,418.13	\$29,418.13
PRENTISS	\$10,000.00	25,315	\$15,442.15	\$25,442.15
QUITMAN	\$10,000.00	7,051	\$4,301.11	\$14,301.11
RANKIN	\$10,000.00	153,902	\$93,880.22	\$103,880.22
SCOTT	\$10,000.00	28,287	\$17,255.07	\$27,255.07
SHARKEY	\$10,000.00	4,377	\$2,669.97	\$12,669.97
SIMPSON	\$10,000.00	26,758	\$16,322.38	\$26,322.38
SMITH	\$10,000.00	16,002	\$9,761.22	\$19,761.22
STONE	\$10,000.00	18,717	\$11,417.37	\$21,417.37
SUNFLOWER	\$10,000.00	25,735	\$15,698.35	\$25,698.35
TALLAHATCHIE	\$10,000.00	13,987	\$8,532.07	\$18,532.07
TATE	\$10,000.00	28,759	\$17,542.99	\$27,542.99
TIPPAH	\$10,000.00	21,995	\$13,416.95	\$23,416.95
TISHOMINGO	\$10,000.00	19,454	\$11,866.94	\$21,866.94

## FY 2019 EMERGENCY MANAGEMENT PERFORMANCE GRANT STATE OF MISSISSIPPI COUNTY FUNDING

TUNICA	\$10,000.00	9,944	\$6,065.84	\$16,065.84
UNION	\$10,000.00	28,606	\$17,449.66	\$27,449.66
WALTHALL	\$10,000.00	14,465	\$8,823.65	\$18,823.65
WARREN	\$10,000.00	46,176	\$28,167.36	\$38,167.36
WASHINGTON	\$10,000.00	45,063	\$27,488.43	\$37,488.43
WAYNE	\$10,000.00	20,298	\$12,381.78	\$22,381.78
WEBSTER	\$10,000.00	9,788	\$5,970.68	\$15,970.68
WILKINSON	\$10,000.00	8,792	\$5,363.12	\$15,363.12
WINSTON	\$10,000.00	18,165	\$11,080.65	\$21,080.65
YALOBUSHA	\$10,000.00	12,392	\$7,559.12	\$17,559.12
YAZOO	\$10,000.00	28,248	\$17,231.28	\$27,231.28
County Total Plus Match			\$5,274,081.10	
MEMA Total Plus Match			\$3,499,488.90	
M&A Plus Match			\$268,962.00	
<b>GRAND TOTAL</b>			<b>\$9,042,532.00</b>	



**HAVE  
A  
PLAN**





# OFFICE OF RESPONSE

*Provides the core, coordinated, state operational response capability needed to save and sustain lives, minimize suffering, and protect property in a timely and effective manner. This is done in communities that become overwhelmed by natural disasters, acts of terrorism, or other emergencies.*

*The Office of Response is responsible for generating state information, monitoring and issuing warnings and alerts, coordinating response efforts, and staffs the State Emergency Operations Center (SEOC).*

The SEOC saw a **316 PERCENT** increase in activations from FY 2018 to FY 2019. The 2019 activations are listed below.

- Severe Weather Event, August 20, 2018- SEOC Level 4 Virtual
- Severe Weather Event and Tropical Storm Gordon, September 3 - 7, 2018- SEOC level 4 Virtual, Level 3 Partial and Level 2 Full
- Severe Weather Event, September 26, 2018- SEOC Level 4 Virtual
- Hurricane Michael, October 8, 2018- SEOC Level 5, Enhanced Monitoring Operations
- Severe Weather Event, October 31-November 1- SEOC Level 4 Virtual

**CONTINUED ON PAGE 21**

(CONTINUED FROM PAGE 20)

- Severe Weather Event, December 27-28, 2018- SEOC Level 4 Virtual and Level 3 Partial
- Severe Weather Event, January 2 - 3, 2019- Level 3 Partial and Level 4 Virtual
- Severe Weather and Cold Weather Event, January 19, 2019- Level 4 Virtual
- Severe Weather Event, January 23, 2019- SEOC Level 5, Enhanced Monitoring Operations
- Cold Weather Event, January 28-29, 2019- SEOC Level 5, Enhanced Monitoring Operations
- Winter Weather Event, January 29, 2019- Level 4 Virtual
- Severe Weather Threat, February 11-12, 2019- SEOC Level 5, Enhanced Monitoring Operations
- River Flooding Event, February 15, 2019- SEOC Level 5, Enhanced Monitoring Operations
- Flooding and Severe Weather, February 19, 2019- Level 4 Virtual
- Severe Weather and Flooding, February 23, 2019- Level 3 Partial
- Severe Weather Event, March 3 - 4, 2019- Level 3 Partial
- Severe Weather Event, March 9, 2019- Level 3 Partial
- Severe Weather and Ongoing Flooding Event, March 22, 2019- Level 4 Virtual
- Severe Weather Event, April 4 - 5, 2019 - Level 4 Virtual
- Ongoing Flooding Event and Severe Weather Threat, April 7, 2019- Level 5, Enhanced Monitoring Operations
- Severe Weather Event, April 13 - 14, 2019 - Level 4 Virtual
- Severe Weather Event, April 18, 2019 - Level 3 Partial
- Severe Weather and Elevated Rainfall Threat, May 7 - 8, 2019 - SEOC Level 5, Enhanced Monitoring Operations and Level 4- Virtual
- Ongoing Flooding Event, May 27, 2019 Level 5, Enhanced Monitoring Operations
- Ongoing Flooding Event and Heavy Rainfall Threat, June 5 - 6, 2019 Level 5, Enhanced Monitoring Operations, and Level 4- Virtual

## BUREAUS

**THE OPERATIONS BUREAU** has a multitude of responsibilities:

- Manages the State Emergency Operations Center (SEOC) and activates the SEOC at the Direction of the Executive Director
- Coordinates requests for assistance through 16 Emergency Support Functions
- Administers the states WebEOC, which is an online asset and resource request system
- Monitors the MEMA Daily Sitroom and activates incident SitRooms during Incidents or Events.

**THE COMMUNICATIONS BUREAU** operates the state warning point, 24/7/365, with the responsibility of alerting state and local officials to all natural or man-made incidents. It coordinates emergency radio communications on the state's Wireless Information Network (MSWIN) to provide assistance and advise local emergency managers.

Averages more than 3,500 alerts per year, including severe thunderstorms, flooding, tornadoes, hurricanes, earthquakes, Grand Gulf Nuclear Station status, and hazardous materials.

Total Calls to State Warning Point/Communications FY 2019:

Information Alerts: 3,739

CONTINUED ON PAGE 22



**(CONTINUED FROM PAGE 21)**

Weather Incidents: 1,107

Transportation Incidents: 295

Hazardous Materials: 506

AtHOC (emergency communications system) Alerts sent FY 2019:

High Severity Alerts: 953

Moderate Severity Alerts: 66

Low Severity Alerts: 5

**THE FIELD SERVICES BUREAU** has nine Area Coordinators (AC's) and two Bureau Directors. They assist and advise the local emergency management managers of all 82 counties as well as the Mississippi Band of Choctaw Indians. The Bureau is responsible for operating and maintaining various equipment:

-Three State Emergency Response (SERT) trailers

-Fly-away SERT capability, which is a mobile satellite dish and communications system

-MEMA Unmanned Aircraft Systems (UAS) program. The UAS Program provides aerial damage assessment capability. It can also broadcast real-time video feeds to MEMA's SEOC via multi-rotor aircraft operated by MEMA FAA Certified Part 107 pilots.

SERT Deployments:

- Exercise Support – 4
- Operational Deployments – 2

UAS Activity:

- Exercise/Training – 25
- Operational Support – 45

Live Video Events: 9

STAY INFORMED

BE PREPARED

HAVE A PLAN

TAKE ACTION





**STORMY  
WEATHER  
AHEAD**

# ARE YOU



channel  
storms  
thunder  
nature  
water  
limnic eruptions  
hurricane  
outdoors  
destroy risk  
hell  
disasters  
population  
destructive  
chasing  
fire  
twisters  
power  
doomsday  
lives  
erupting  
economic  
blaze  
report  
tremor  
recover  
tragic  
ve  
ning  
ions  
explosion  
grim  
hot  
sun  
ment  
desertification  
atmosphere  
mountain  
volcanic  
earthquake  
emergency  
broken  
season  
vulnerable  
life  
earthquakes  
mudslides  
flood  
climate  
wildfires  
volcanic eruptions  
burn  
seasonal  
property  
lava event  
monsoon  
tsunami  
event  
insurance  
toll  
disasters  
help  
inundation  
globe  
violent

READY?

# OFFICE OF MITIGATION

*"Every \$1 invested in Mitigation efforts saves \$6. An estimated \$13 million of Mitigation dollars invested in Mississippi saved an estimated \$82 million dollars in future losses. Mitigation works...it saves lives and protects property." Jana Henderson, Office of Mitigation*

## PLANS BUREAU

- Regional Plans under development: 4
- Multi-Jurisdictional Plans under development: 2
- Tribal Plans under development: 1
- Disaster Recovery Unit (DRU) Plans developed and approved: 3

## FLOODPLAIN MANAGEMENT BUREAU

- National Flood Insurance Program (NFIP) communities participating - 331
- Community Rating System (CRS) Communities - 32
- Average savings per policy in CRS community - \$56.00
- Total CRS Community savings - \$3,025,489
- Policies in force - 62,526 (dated 10/17/2019)
- Total Flood Insurance Coverage - \$15,735,967,200.00
- Flood Insurance claims to date in MS - 62,009
- Flood Insurance payout to date - \$3,040,426,038.00
- Average yearly premium in MS - \$738.24

## THE FLOODPLAIN STAFF PERFORMED THE FOLLOWING:

- Community Assistance visits: 47
- Community Assistance visits (closed): 37
- Number of Regulatory Ordinances reviewed: 61
- Floodplain Determinations: 497 letters
- Technical Assistance visits/contacts: 266
- Community Assistance contacts: 51
- Floodplain Workshops conducted: 10
- Substantial Damage determinations: 979

## MITIGATION GRANTS BUREAU

- Open Disasters: 10
- Closed Disasters: 2
- Approved Projects totaling more than \$3.4 million
- Federal Funds Obligated to date: \$335,463,741
- Managing Open projects: 70
- Payments made totaling: \$10,716,752
- Closed projects to date totaling: Over \$50 million



**TAKE  
ACTION**



# OFFICE OF RECOVERY

*“The Recovery Office Team continues to provide federal and state reimbursement funding throughout Mississippi under the Public Assistance grant program to eligible governmental and certain private non-profit entities. Along with managing three overlapping state-led disasters, the Recovery Office has disbursed over \$75M to eligible applicants in FY 2019.” – Clayton French*

## FY 2019 PUBLIC ASSISTANCE

### MONEY DISBURSED

DISASTER 1604 – Hurricane Katrina (2005) = **\$41,287,079.31**

---

DISASTER 1794 – Hurricane Gustav (2008) = **\$1,528,101.29**

---

DISASTER 1906 – Severe Storms, Tornadoes, and Flooding (2010) = **\$1,151,945.99**

---

DISASTER 1916 – Severe Storms and Flooding (2010) = **\$391,759.71**

---

DISASTER 1972 – Severe Storms and Tornadoes = **\$1,418,625.63**

---

DISASTER 1983 – Flooding (2011) = **\$592,180.06**

---

DISASTER 4081 – Hurricane Isaac (2012) = **\$10,064,432.46**

---

DISASTER 4101 – Severe Storms and Tornadoes (2013) = **\$871,034.68**

---

DISASTER 4175 – Severe Storms, Tornadoes, and Floods (2014) = **\$9,440,878.17**

---

DISASTER 4205 – Severe Storms and Tornadoes (2014) = **\$146,555.15**

---

DISASTER 4248 – Severe Storms, Tornadoes, and Straight-Line Winds (2015) = **\$253,677.24**

---

DISASTER 4268 – Severe Storms and Flooding (2016) = **\$1,769,770.33**

---

DISASTER 4295 – Pine Belt Tornado and Straight Line Winds (2017) = **\$426,555.17**

---

DISASTER 4314 – Severe Storms, Tornadoes, Straight-Line Winds and Flooding = **\$3,050,404.30**

---

DISASTER 4350 – Hurricane Nate (2017) = **\$3,017,917.56**

---

TOTAL - **\$75,410,917.05**



# OFFICE OF HOUSING AND INDIVIDUAL ASSISTANCE

*"The Office of Housing and Individual Assistance strives to provide the resources necessary to foster relief for all of Mississippi's affected citizens after disasters occur. We achieve this with the cooperation of our County Emergency Managers, state partners, volunteer organizations throughout Mississippi and members of Disability Community." Todd DeMuth State Coordinating Officer*

The Office of Housing and Individual Assistance contains three Bureaus of Individual Assistance, Disability Integration and Housing. The office works to provide access to services, aid and information for all citizens of Mississippi to assist them with whatever challenges they may face in times of disaster. Part of these efforts focus on working with and harnessing the capabilities in volunteer groups, private sector businesses and faith-based organizations. These entities provide extraordinary care and resources to help Mississippians prepare for, respond to and recovery from disasters. The office works to restore normalcy to the lives of those severely impacted by both natural and human-made disasters.

The Mississippi Temporary Housing Program allocated \$304,000.00 to 420 displaced households in FY 19 due to severe weather and flooding.

As a result of the Severe Weather and Flooding events in 2019, MEMA collaborated with FEMA to secure over \$3.4 million for displaced survivors in FY 19.

## INDIVIDUAL ASSISTANCE BUREAU

The Individual Assistance (IA) Bureau promotes the agency by instilling a "whole community" approach to its efforts in guiding communities to deal with catastrophic events. The IA Bureau plays a crucial role in establishing and executing the recovery housing plan after significant events such as hurricanes, which occur almost annually along the Gulf Coast. Communicating effectively with citizens, counties and our partners on all levels of government is the key to developing pre and post-disaster plans that save property and lives.

## DISABILITIES INTEGRATION ADVISOR

The Disabilities Integration Advisor is at the forefront of Disabilities Rights to ensure all aspects of Emergency Management Planning fully incorporate those with disabilities. The advisor works tirelessly to educate the emergency management community on the correct actions required to ensure compliance with the Americans with Disabilities Act and other legislation that provide equal accessibility for the disability community.



# INFORMATION TECHNOLOGY SERVICES

*This year MEMA Information Technology Services (MITS) has accomplished the following:*

- Created a new office comprising of Information Technology (IT), Graphical Information Systems (GIS), and Communications.*
- Made three core network upgrades to include installation of a 6807-core switch, completed a total overhaul and replacement of all network switches from 15-year-old switches to new Ruckus Enterprise class switches, added a FortiGate 200E Enterprise class firewall and upgraded the Overwatch wireless system.*
- Started a partnership with Crisis Track software for damage assessments, which will replace the current collector app. Currently, we have 42 counties setup and working with current data sets. We will continue to work with counties daily to gather data and bring them on board.*
- We applied for and received a grant for NG911, which was for 1.9 million dollars and with state matching funds brings the total to 3.2 million dollars. This grant will be used for the development of a state (Next Generation) NG 911 plan.*
- Rolled out a new fleet of band 14 capable iPhone 10s to replace aging cellular devices.*
- Rolled out new band 14 capable WIFI enabled devices to replace aging midi devices.*
- Began deploying new Surface Pro computers, which will replace multiple computing devices and all aging laptops and desktops will be repurposed. The New Surface Pro deployment will continue throughout 2021.*
- Migrated WebEOC from a physically hosted device based at MEMA to a cloud ready environment. Moving this resource to the cloud, reduces downtime and removes a large cost of maintenance and potential upgrades.*

*We will continue to add to and upgrade all current programs in the Information Technology Service fleet. We look forward to serving the employees of MEMA and the citizens of the great State of Mississippi.*





# OFFICE OF EXTERNAL AFFAIRS

*"The world of communications is ever-evolving, and so is the way we communicate crucial information. We must respond quickly and accurately and do that in the most efficient way possible to help protect all Mississippians in times of emergencies and disasters." – Malarly White, Director of External Affairs*

MEMA's External Affairs Office ensures that during an emergency or disaster, information is disseminated effectively to help protect lives and property. Information communicated during an incident can range from the coordination with other state agencies to a briefing of the agency's action plan to internal stakeholders. In order to effectively lead the agency's communication efforts, all members of the External Affairs Office have a working knowledge of all agency programs and functions.

The External Affairs staff utilizes multiple tools, such as social media and the agency's website, to convey the agency's efforts to the general public and further educate the public on specific safety measures to take during a disaster. MEMA's External Affairs team also has a vital working relationship with members of the media, which is another resource that is used when sharing vital information with the public.



**FACEBOOK – 114,448 LIKES; 114,212 FOLLOWERS**  
**TWITTER – 1,297 NEW FOLLOWERS**  
**YOUTUBE CHANNEL - 201 SUBSCRIBERS**



# ANNUAL REPORT JULY 2018 THROUGH JUNE 2019

## 2018/2019 MUTUAL AID (EMAC, SMAC, MISSION ASSIGNMENTS) SUMMARY

*The Emergency Management Assistance Compact (EMAC) is an agreement signed by all 50 states and the U.S. Territories that allows state-to-state support during disasters. For information on EMAC, visit [www.emacweb.org](http://www.emacweb.org)*

### **HURRICANE FLORENCE (84 TOTAL PERSONNEL)**

#### Virginia – September, 2018

- Type II Swiftwater Rescue Teams - 42 members of the State's Search and Rescue Task Force deployed for 10 days for Swiftwater Rescue Operations
- CH-47 Helicopters - eight crew members deployed for two days before re-deploying to North Carolina

#### North Carolina – September, 2018

- ESF 8 Incident Management Team – six Mississippi State Department of Health (MSDH) personnel deployed for 18 days to support SEOC operations and provide Subject Matter Expert (SME) technical assistance
- Medical and Public Health Team w/ Bus - five MSDH personnel deployed for nine days to support triage and decompression of impacted healthcare facilities
- Public Health Nurse Strike Teams - 12 MSDH and UMMC personnel deployed for 16 days to provide nursing services to general population shelter residents
- CH-47 with 8 crew members deployed for 10 days to provide general aviation support

**CONTINUED ON PAGE 34**

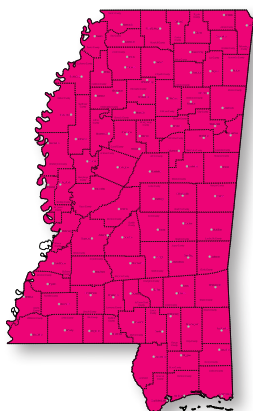


# MEMA CONTINUES TO RESPOND

## HURRICANE KATRINA (FEMA 1604)

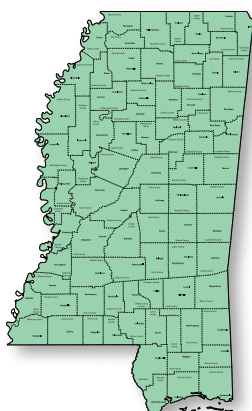
Hurricane Katrina's winds and storm surge reached the Mississippi Coastline on the morning of August 29, 2005, beginning a two-day path of destruction through central Mississippi; by 10 a.m. CDT on August 29, 2005, the eye of Katrina began traveling up the entire state, only slowing from hurricane-force winds at Meridian near 7 p.m. and entering Tennessee as a tropical storm. Many coastal towns of Mississippi had already been obliterated in a single night. Hurricane-force winds reached coastal Mississippi by 2 a.m. and lasted over 17 hours, spawning 11 tornadoes and a 28-foot storm surge flooding 6-12 miles inland. Many, unable to evacuate, survived by climbing to attics or rooftops, or swimming to higher buildings and trees. The worst property damage from Katrina occurred in coastal Mississippi, where all towns flooded over 90% in hours, and waves destroyed many historic buildings, with others gutted to the 3rd story. Afterward, 238 people died in Mississippi, and all counties in Mississippi were declared disaster areas, 49 for full federal assistance. Regulations were changed later for emergency centers and casinos. The emergency command centers were moved higher because all 3 coastal centers flooded at 30 ft above sea level. Casinos were allowed on land rather than limited to floating casino barges as in 2005. More than one million people in Mississippi were affected, and almost 6 months later, the extent of the devastation in Mississippi was still described as "staggering".

In the past 14 years, Mississippi has made the best out of a devastating situation utilizing many federal and state programs. Contrary to the devastation, the recovery progress has also been "staggering". While several Katrina projects are still in progress, the Coast has been significantly rebuilt and the State has become much more resilient.



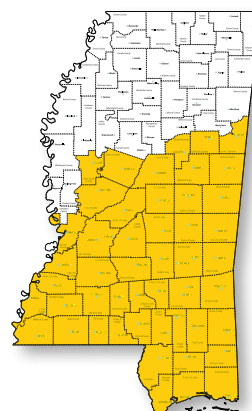
### MITIGATION (404)

\$405,463,778.12  
All Counties available  
444 Applicants  
1770 Projects Statewide



### PUBLIC ASSISTANCE

\$3,213,955, 957.58  
in reimbursements  
82 counties declared  
11,111 Projects Statewide  
98% completed



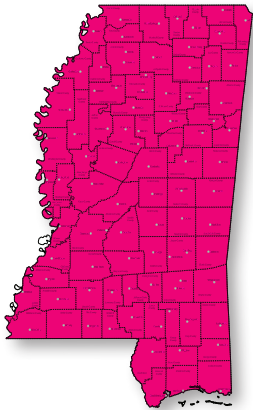
### INDIVIDUAL ASSISTANCE

\$1,293,717,474.49 in Assistance  
274,488 total  
individual applications  
49 counties declared  
100% completed



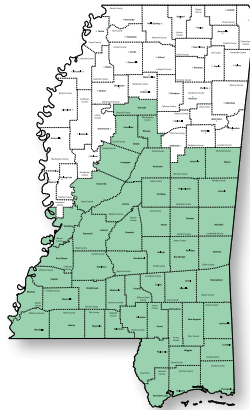
## HURRICANE ISAAC (FEMA 4081)

Hurricane Isaac made landfall on August 28, 2012, seven years to the date after Hurricane Katrina. Although the inner core of Isaac moved very slowly across central Louisiana, the dangerous eastern side of the storm devastated Mississippi. With an 8.3-foot storm surge and wind gusts reaching 70 mph, 2,132 evacuees housed in 31 shelters across the state. The Nation Weather Service reported over 17 inches of rain had fallen at Kiln, MS. The excessive rain from Isaac also eroded the Lake Tangipahoa Dam causing it to nearly break and flood the already-high Tangipahoa River. The resilient mitigations projects from Hurricane Katrina lessened the amount of damages and discomfort of Mississippi citizens,



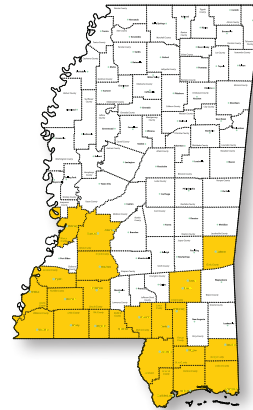
### MITIGATION (404)

\$8,853,164.08  
All Counties available  
57 Projects Statewide



### PUBLIC ASSISTANCE

\$37,593,740.62  
48 Counties  
767 Projects Statewide  
98% completed

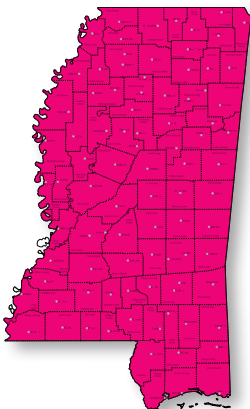


### INDIVIDUAL ASSISTANCE

\$18,066,465.05 provided  
6,663 total applications  
22 counties served.  
100% completed

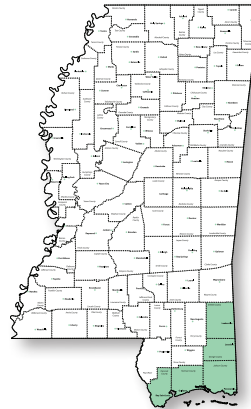
## HURRICANE NATE (FEMA 4350)

Hurricane Nate made landfall near Biloxi in the early morning hours of Sunday, October 8, 2017. Overall, the storm brought several minor to moderate impacts to South Mississippi including moderate storm surge, tropical-storm force winds, and very heavy rainfall. Each of Mississippi's coastal counties reported 0 deaths or major injuries involved with Nate's landfall. Because of the direction of the storm, Harrison, Jackson, and George counties took a direct hit from Nate's eyewall, and suffered the greatest damages. Again, the mitigation efforts over the past decade proved to be very beneficial. Individual Assistance was not declared in this event.



### MITIGATION (404)

\$172,560.00M  
All Counties available  
27 Projects Statewide



### PUBLIC ASSISTANCE

\$9,942,248.04  
6 Counties  
179 Projects Statewide  
50% completed



## (CONTINUED FROM PAGE 31)

South Carolina – September, 2018

- 1 UH 72 with three crew members deployed for 15 days

## HURRICANE MICHAEL (105 TOTAL PERSONNEL)

Florida – October, 2018

- A-Team - two MEMA personnel deployed for 16 days to assist Florida in EMAC operations
- Deputy Individual Assistance Officer - one MEMA personnel deployed for 23 days to assist and support the Florida State Individual Assistance Officer at the SEOC
- Individual Assistance Specialist one MEMA personnel deployed for 10 days to assist in the implementation of FEMA's IA Program
- Individual Assistance Specialist one MEMA personnel deployed for 20 days to assist in the implementation of FEMA's IA Program
- Individual Assistance Specialist one MEMA personnel deployed for 24 days to assist in the implementation of FEMA's IA Program
- Supply Unit Leader one personnel deployed for 16 days to work within the Logistics Sections as Supply Unit Leader for Bay County EOC
- Mass Care Coordinator one MSDH personnel deployed for 31 days to support ESF 6 as Mass Care Coordinator
- ESF 8 Augmentation Team 11 MSDH personnel deployed for 15 days to support SEOC operations and provide SME technical assistance
- Ambulance Bus with crew 10 personnel deployed for seven days to assist with healthcare facility evacuations and EMS operations
- Ambulance Strike Team 13 personnel deployed for six days to provide patient triage, treatment and transport
- Type III All Hazards Incident Management Team 10 County EMA personnel deployed for 16 days to support EOC Operations and Planning Support
- Swiftwater Rescue Teams: 42 members of the State's Search and Rescue Task Force deployed for 10 days for Swiftwater Rescue Operations
- CH-47 with crew 11 Mississippi National Guard personnel deployed for eight days to assist with air movement of personnel and equipment

## 18 TOTAL MISSIONS

## 189 PERSONNEL DEPLOYED

26 Total A-Team Qualified Mississippians

39 MRPs (Mission Ready Package) from 10 Agencies/Teams

17 Mission Assignments generated for:

- Tropical Storm Gordon Sep. 2018
- MS Flooding Event Feb. 2019
- Downed Aircraft, Apr. 2019
- Two Severe Weather Events April, 2019
- Severe Weather Event May, 2019





# PREPARING FOR TOMORROW'S DISASTERS TODAY







PREPARING FOR TOMORROW'S DISASTERS TODAY

[WWW.FACEBOOK.COM/MSEMAORG](http://WWW.FACEBOOK.COM/MSEMAORG)

[WWW.TWITTER.COM/MSEMA](http://WWW.TWITTER.COM/MSEMA)

[WWW.LINKEDIN.COM/COMPANY/MSEMA](http://WWW.LINKEDIN.COM/COMPANY/MSEMA)

[WWW.YOUTUB.COM/MSEMAORG1](http://WWW.YOUTUB.COM/MSEMAORG1)



SMARTPHONE APP: SEARCH MISSISSIPPI EMA

[WWW.MSEMA.ORG](http://WWW.MSEMA.ORG)