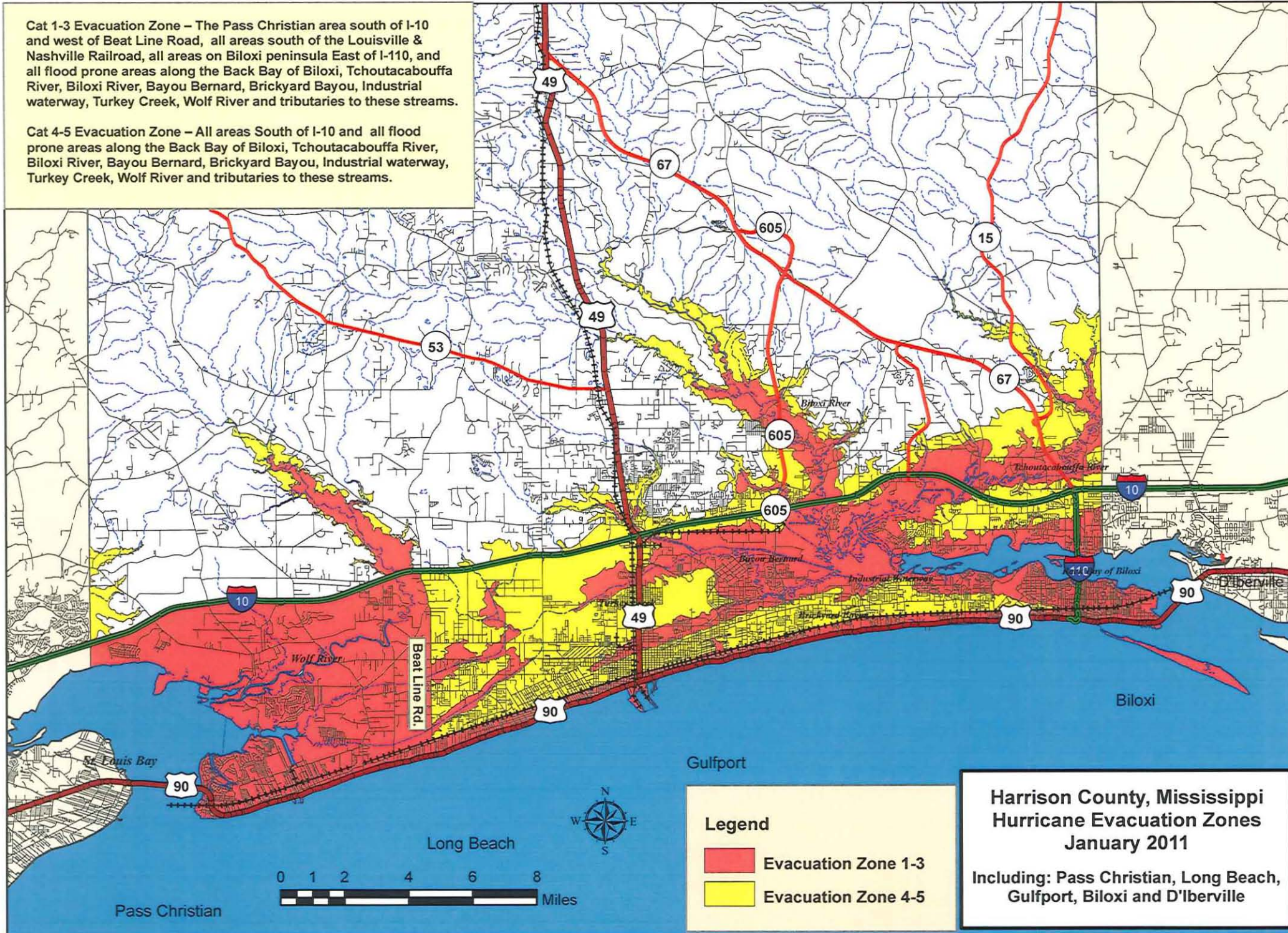


**Cat 1-3 Evacuation Zone** – The Pass Christian area south of I-10 and west of Beat Line Road, all areas south of the Louisville & Nashville Railroad, all areas south of the Biloxi peninsula East of I-110, and all flood prone areas along the Back Bay of Biloxi, Tchoutacabouffa River, Biloxi River, Bayou Bernard, Brickyard Bayou, Industrial waterway, Turkey Creek, Wolf River and tributaries to these streams.

**Cat 4-5 Evacuation Zone** – All areas South of I-10 and all flood prone areas along the Back Bay of Biloxi, Tchoutacabouffa River, Biloxi River, Bayou Bernard, Brickyard Bayou, Industrial waterway, Turkey Creek, Wolf River and tributaries to these streams.



**Harrison County, Mississippi  
Hurricane Evacuation Zones  
January 2011**  
Including: Pass Christian, Long Beach,  
Gulfport, Biloxi and D'Iberville