

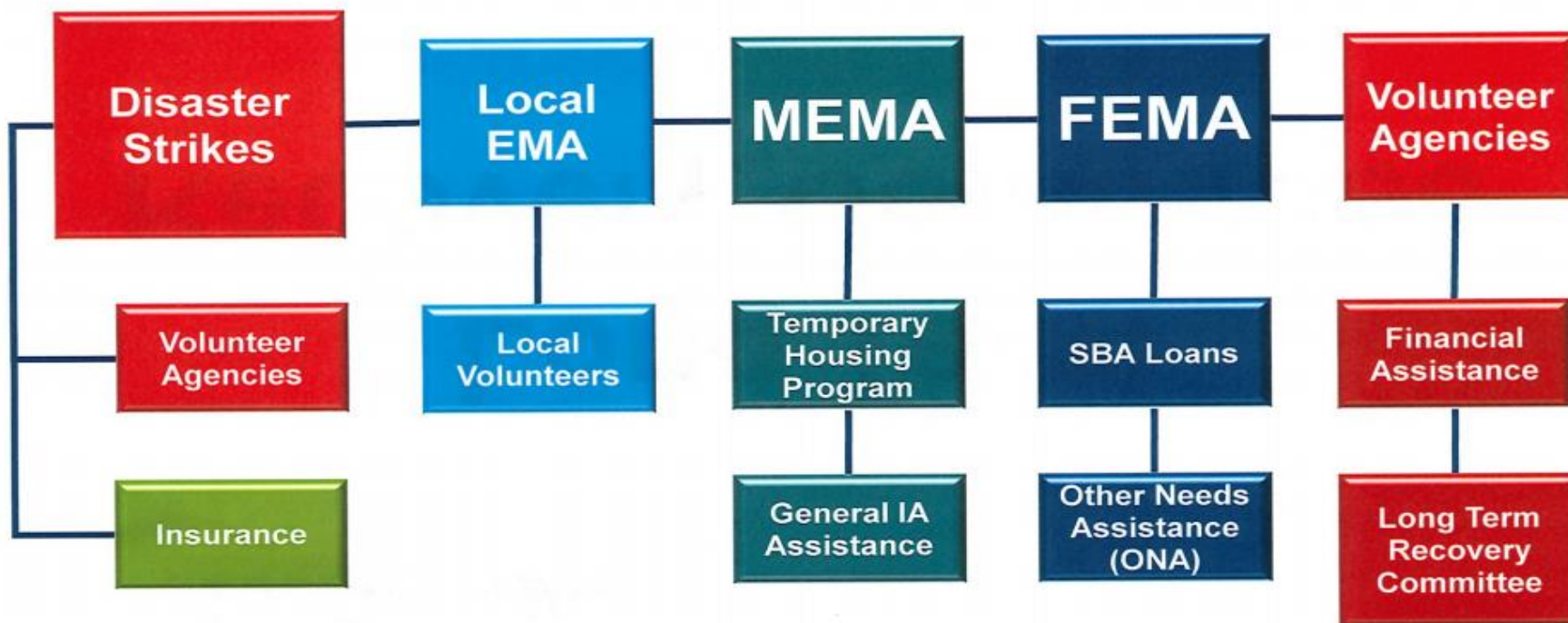


Individual Assistance Long-Term Recovery Committee





The Individual Assistance Sequence of Delivery





Long-Term Recovery Committee

An LTRC is a cooperative body made up of representatives from community faith-based groups, local organizations, and other organizations working to assist individuals and families as they recover from disaster. Each LTRC is unique and reflects local needs, available resources, cultural diversity, leadership style, and community support.





Long Term Recovery Committee Structure

- Organizations providing resources in the recovery process
 - 3 M's**
 - **Money Organizations:** Groups with funds collected for disaster recovery and with fundraising capabilities. These can include organizations such as: Lions Club, and United Way, local chapters of Boy and Girl Scouts, and other local organizations that have fund raising capabilities.
 - **Manpower Organizations:** Groups who provide volunteer labor and representatives from faith-based and other organizations that can assist with labor. These can include affiliated and non-affiliated volunteer organizations that are active in disasters
 - **Materials Organizations:** Groups and businesses who can donate materials and local agencies extend assistance for disaster-related needs. These can include Walmart, Home Depot, Lowes, and local hardware stores.



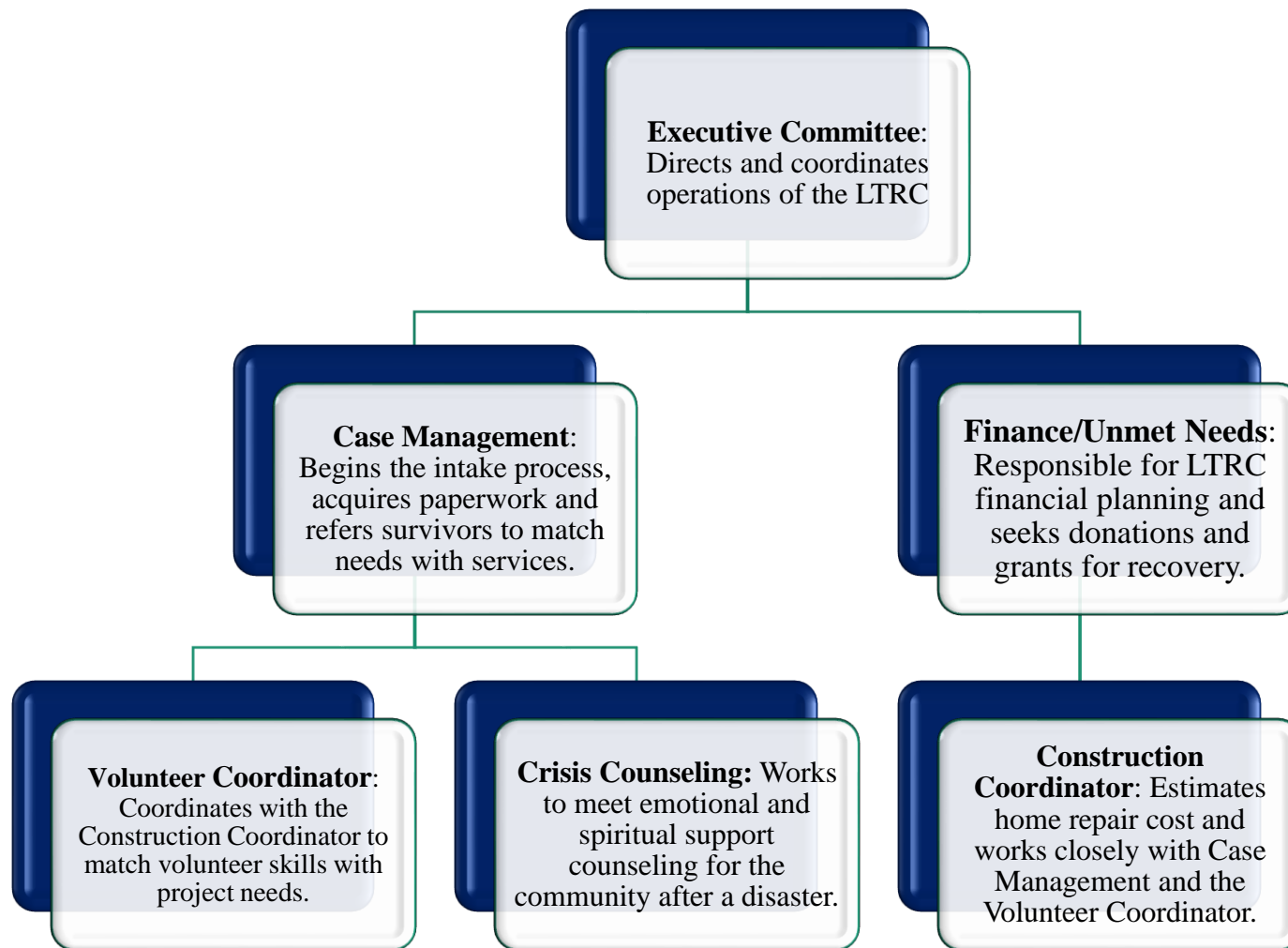
Long-Term Recovery Committee

Mission Statement

- The mission statement should guide the actions of the LTRC, state its overall goal for the recovery, provide a sense of direction, and provide a framework for overall decision-making.
- It's important to take the time to determine the long-term recovery mission.



Long-Term Recovery Framework

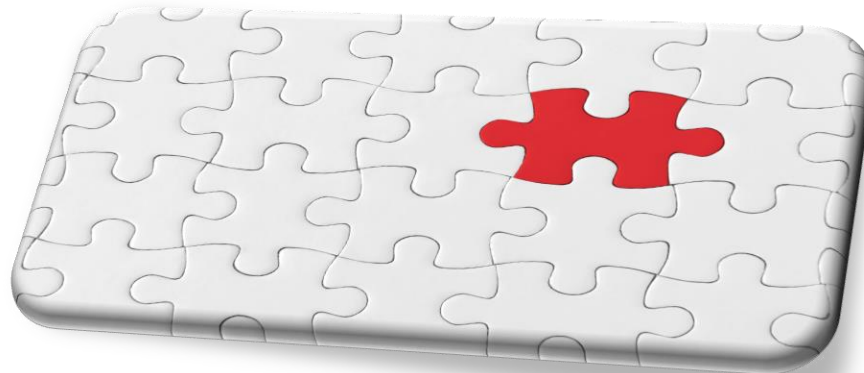




Identifying a 501(c)(3)

501(c)(3)

Choosing a 501(c)(3) is a very important step in the LTRC process. This organization will hold the funds the county receives and will be responsible for utilizing the funds in an honorable manner. Choices for a 501(c)(3) can include charitable, religious, educational and other organizations defined by the IRS Code 501c3. Some LTRC's become their own 501c3.





Long-Term Recovery Benefits

Benefits for having an established LTRC

- Enhances knowledge, communication, and information sharing
- Attracts more resources – Money, Manpower and Materials
- Speaks with one unified voice
- Leverages resources
- Identifies gaps, problems, and issues
- Coordinates efforts among agencies
- Minimize duplication of efforts and services
- Accelerate progress
- Increase sustainability
- Challenge's agencies to work beyond themselves





Benefits of Collaboration

Possible Resources

- Volunteer Mississippi
- Habitat for Humanity
- American Red Cross
- United Way
- Lions Club International
- Volunteer Organizations Active in Disaster
- Salvation Army Disaster Relief Services
- Catholic Charities
- Southern Baptist Convention Disaster Relief



Long-Term Recovery

With a Long-Term Recovery Committee disaster survivors have a link for disaster recovery. This structure will depend on disaster impact, size and strength of the community, and the communities volunteer organizations.

Committees are encouraged to meet during Blue Sky Days (non-storm or disaster) to stay in touch and prepare for future disasters. You never know where the best resources could be located.



Information

Office of Housing and Individual Assistance

Individual Assistance Director

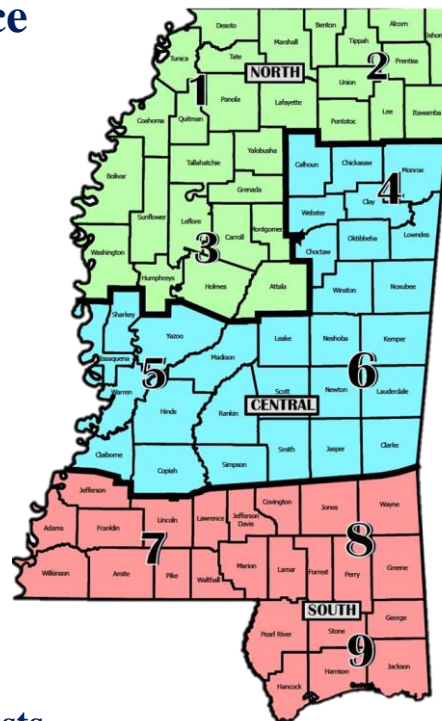
Denise Gray-Hunt
dhunt1@mema.ms.gov

Housing Bureau Director

Nicole Pressley
npressley@mema.ms.gov

Disaster Integration Advisor

Amber Hall
ahall@mema.ms.gov



Individual Assistance and Housing Specialists

| | | | |
|-----------------|---------|-----------------------|--|
| Carlos Martinez | North | Individual Assistance | cmartinez@mema.ms.gov |
| Sylvia Gibson | Central | Individual Assistance | sgibson@mema.ms.gov |
| Meredith Lee | South | Individual Assistance | mlee@mema.ms.gov |
| Joy Jones | SELOC | Individual Assistance | jjones@mema.ms.gov |
| Erica Hibbler | SELOC | Housing | ehibbler@mema.ms.gov |



Questions

